

## DUT antibody [HL1210]

Cat. No. GTX636527

|             |                   |
|-------------|-------------------|
| Host        | Rabbit            |
| Clonality   | Monoclonal        |
| Isotype     | IgG               |
| Application | WB, ICC/IF, IHC-P |
| Reactivity  | Human             |

Package  
100 µl, 25 µl

## APPLICATION

## Application Note

\*Optimal dilutions/concentrations should be determined by the researcher.

| Suggested dilution | Recommended dilution |
|--------------------|----------------------|
| WB                 | Assay dependent      |
| ICC/IF             | Assay dependent      |
| IHC-P              | 1:100-1:1000         |

Not tested in other applications.

Calculated MW 27 kDa. ( [Note](#) )

## PROPERTIES

|               |  |
|---------------|--|
| Form          | Liquid   |
| Buffer        | PBS  |
| Preservative  | No preservative  |
| Storage       | Store as concentrated solution. Centrifuge briefly prior to opening vial. For short-term storage (1-2 weeks), store at 4°C. For long-term storage, aliquot and store at -20°C or below. Avoid multiple freeze-thaw cycles. |
| Concentration | 1 mg/ml (Please refer to the vial label for the specific concentration.)   |
| Immunogen     | Recombinant protein encompassing a sequence within the center region of human DUT. The exact sequence is proprietary.  |
| Purification  | Affinity purified by Protein A.  |
| Conjugation   | Unconjugated   |

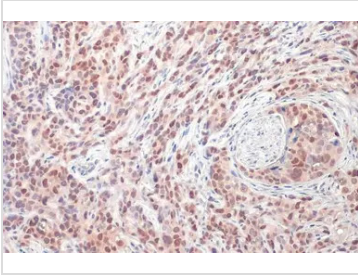
## Note

For laboratory research use only. Not for any clinical, therapeutic, or diagnostic use in humans or animals. Not for animal or human consumption.

Purchasers shall not, and agree not to enable third parties to, analyze, copy, reverse engineer or otherwise attempt to determine the structure or sequence of the product.



For full product information, images and publications, please visit our [website](#).

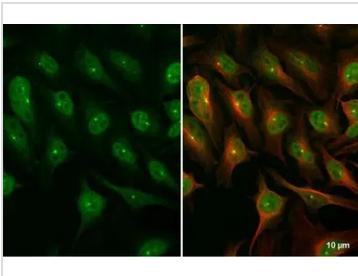
**DATA IMAGES**

**GTX636527 IHC-P Image**

DUT antibody [HL1210] detects DUT protein at cytoplasm and nucleus by immunohistochemical analysis.

Sample: Paraffin-embedded human A549.

DUT stained by DUT antibody [HL1210] (GTX636527) diluted at 1:100.

Antigen Retrieval: Citrate buffer, pH 6.0, 15 min

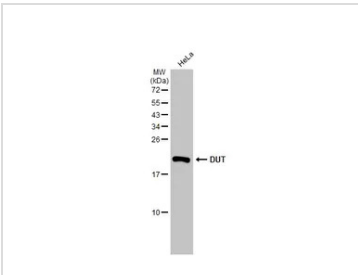

**GTX636527 ICC/IF Image**

DUT antibody [HL1210] detects DUT protein at cytoplasm, nucleus and centrosome by immunofluorescent analysis.

Sample: HeLa cells were fixed in 4% paraformaldehyde at RT for 15 min.

Green: DUT stained by DUT antibody [HL1210] (GTX636527) diluted at 1:500.

Red: alpha Tubulin, a cytoskeleton marker, stained by alpha Tubulin antibody [GT114] (GTX628802) diluted at 1:1000.


**GTX636527 WB Image**

Whole cell extract (30 µg) was separated by 15% SDS-PAGE, and the membrane was blotted with DUT antibody [HL1210] (GTX636527) diluted at 1:1000. The HRP-conjugated anti-rabbit IgG antibody (GTX213110-01) was used to detect the primary antibody.



For full product information, images and publications, please visit our [website](https://www.genetex.com).