

Nucleoporin p62 antibody [HL1226]

Cat. No. GTX636570

Host	Rabbit
Clonality	Monoclonal
Isotype	IgG
Application	WB, IHC-P
Reactivity	Human, Mouse, Rat

Package
100 µl, 25 µl

APPLICATION

Application Note

*Optimal dilutions/concentrations should be determined by the researcher.

Suggested dilution	Recommended dilution
WB	1:1000-1:10000
IHC-P	Assay dependent

Not tested in other applications.

Calculated MW 53 kDa. ([Note](#))

PROPERTIES

Form	Liquid
Buffer	PBS
Preservative	No preservative
Storage	Store as concentrated solution. Centrifuge briefly prior to opening vial. For short-term storage (1-2 weeks), store at 4°C. For long-term storage, aliquot and store at -20°C or below. Avoid multiple freeze-thaw cycles.
Concentration	1 mg/ml (Please refer to the vial label for the specific concentration.)
Immunogen	Recombinant protein encompassing a sequence within the center region of human Nucleoporin p62. The exact sequence is proprietary.
Purification	Affinity purified by Protein A.
Conjugation	Unconjugated

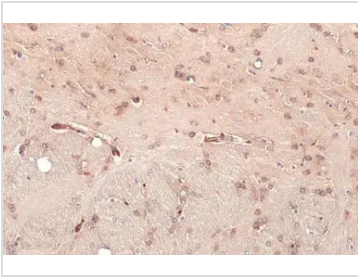
Note

For laboratory research use only. Not for any clinical, therapeutic, or diagnostic use in humans or animals. Not for animal or human consumption.

Purchasers shall not, and agree not to enable third parties to, analyze, copy, reverse engineer or otherwise attempt to determine the structure or sequence of the product.



For full product information, images and publications, please visit our [website](#).

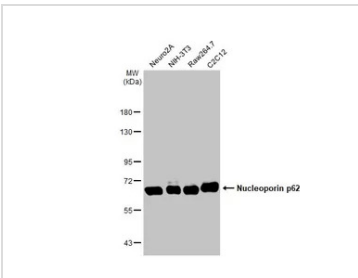
DATA IMAGES

GTX636570 IHC-P Image

Nucleoporin p62 antibody [HL1226] detects Nucleoporin p62 protein at nuclear envelope by immunohistochemical analysis.

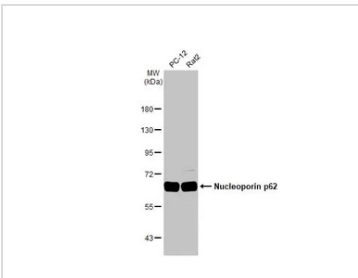
Sample: Paraffin-embedded rat brain.

Nucleoporin p62 stained by Nucleoporin p62 antibody [HL1226] (GTX636570) diluted at 1:100.

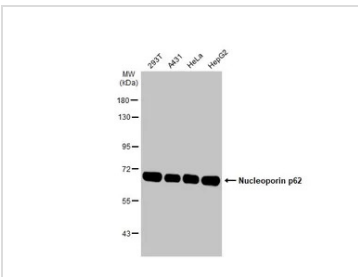
Antigen Retrieval: Citrate buffer, pH 6.0, 15 min


GTX636570 WB Image

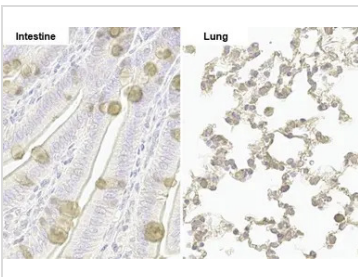
Various whole cell extracts (30 µg) were separated by 7.5% SDS-PAGE, and the membrane was blotted with Nucleoporin p62 antibody [HL1226] (GTX636570) diluted at 1:5000. The HRP-conjugated anti-rabbit IgG antibody (GTX213110-01) was used to detect the primary antibody.


GTX636570 WB Image

Various whole cell extracts (30 µg) were separated by 7.5% SDS-PAGE, and the membrane was blotted with Nucleoporin p62 antibody [HL1226] (GTX636570) diluted at 1:5000. The HRP-conjugated anti-rabbit IgG antibody (GTX213110-01) was used to detect the primary antibody.


GTX636570 WB Image

Various whole cell extracts (30 µg) were separated by 7.5% SDS-PAGE, and the membrane was blotted with Nucleoporin p62 antibody [HL1226] (GTX636570) diluted at 1:5000. The HRP-conjugated anti-rabbit IgG antibody (GTX213110-01) was used to detect the primary antibody.


GTX636570 IHC-P Image

Nucleoporin p62 antibody [HL1226] detects Nucleoporin p62 protein by immunohistochemical analysis.

Sample: Paraffin-embedded mouse tissue.

Nucleoporin p62 stained by Nucleoporin p62 antibody [HL1226] (GTX636570) diluted at 1:100.

Antigen Retrieval: Citrate buffer, pH 6.0, 15 min



For full product information, images and publications, please visit our [website](https://www.genetex.com).