

DDDDK tag antibody [GT1216]

Cat. No. GTX636630

Host	Mouse
Clonality	Monoclonal
Isotype	IgG2b
Applications	WB, ICC/IF, IP
Reactivity	Species independent

Package
100 µl, 25 µl

Applications

Application Note

*Optimal dilutions/concentrations should be determined by the researcher.

Suggested dilution	Recommended dilution
WB	1:1000-1:10000
ICC/IF	Assay dependent
IP	Assay dependent

Not tested in other applications.

Properties

Form	Liquid
Buffer	PBS, 20% Glycerol
Preservative	No preservatives
Storage	Store as concentrated solution. Centrifuge briefly prior to opening vial. For short-term storage (1-2 weeks), store at 4°C. For long-term storage, aliquot and store at -20°C or below. Avoid multiple freeze-thaw cycles.
Concentration	1 mg/ml (Please refer to the vial label for the specific concentration.)
Immunogen	The immunogen used to generate this antibody corresponds to DDDDK tag
Purification	Affinity purified by Protein A.
Conjugation	Unconjugated

Note

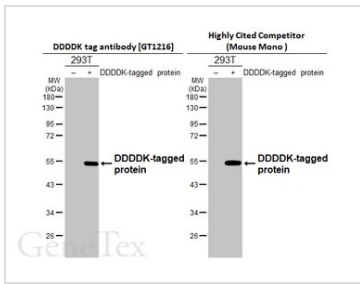
For laboratory research use only. Not for any clinical, therapeutic, or diagnostic use in humans or animals. Not for animal or human consumption.

Purchasers shall not, and agree not to enable third parties to, analyze, copy, reverse engineer or otherwise attempt to determine the structure or sequence of the product.



For full product information, images and publications, please visit our [website](#).

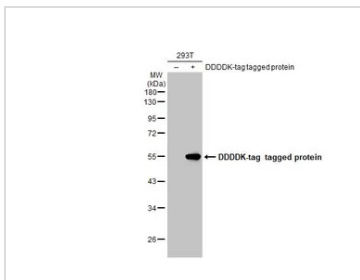
DATA IMAGES



GTX636630 WB Image

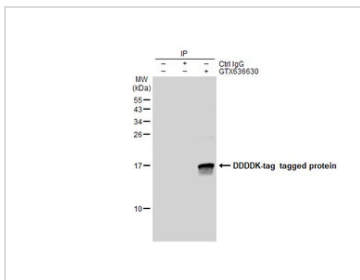
Non-transfected (-) and transfected (+) 293T whole cell extracts (30 µg) were separated by 10% SDS-PAGE, and the membranes were blotted with DDDDK tag antibody [GT1216] (GTX636630) diluted at 1:10000 and competitor's antibody (Highly Cited Antibody) diluted at 1:10000. The HRP-conjugated anti-mouse IgG antibody (GTX213111-01) was used to detect the primary antibody.

*The competitor is not affiliated with GeneTex and does not endorse this product.



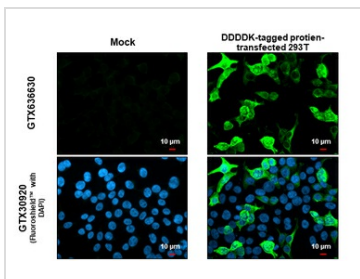
GTX636630 WB Image

Non-transfected (-) and transfected (+) 293T whole cell extracts (30 µg) were separated by 10% SDS-PAGE, and the membrane was blotted with DDDDK tag antibody [GT1216] (GTX636630) diluted at 1:5000. The HRP-conjugated anti-mouse IgG antibody (GTX213111-01) was used to detect the primary antibody.



GTX636630 IP Image

Immunoprecipitation of DDDDK-tag tagged protein from DDDDK-tag tagged protein transfected 293T whole cell extracts using 5 µg of DDDDK tag antibody [GT1216] (GTX636630). Western blot analysis was performed using DDDDK tag antibody [GT1216] (GTX636630). EasyBlot HRP-conjugated anti mouse IgG antibody (GTX221667-01).



GTX636630 ICC/IF Image

DDDDK tag antibody [GT1216] detects DDDDK tag protein at cytoplasm by immunofluorescent analysis. Sample: Mock and transfected 293T cells were fixed in 4% paraformaldehyde at RT for 15 min. Green: DDDDK tag stained by DDDDK tag antibody [GT1216] (GTX636630) diluted at 1:500. Blue: Fluoroshield with DAPI (GTX30920). Scale bar= 10µm.



For full product information, images and publications, please visit our [website](#).