

Thymidylate synthase antibody [HL1236]

Cat. No. GTX636635

Host	Rabbit
Clonality	Monoclonal
Isotype	IgG
Applications	WB, ICC/IF, IHC-P
Reactivity	Human, Mouse, Rat, Cat, Dog

Package
100 µl, 25 µl

Applications

Application Note

*Optimal dilutions/concentrations should be determined by the researcher.

Suggested dilution	Recommended dilution
WB	1:500-1:3000
ICC/IF	Assay dependent
IHC-P	Assay dependent

Not tested in other applications.

Observed MW (kDa) 36 kDa.

Properties

Form	Liquid
Buffer	PBS
Preservative	No preservatives
Storage	Store as concentrated solution. Centrifuge briefly prior to opening vial. For short-term storage (1-2 weeks), store at 4°C. For long-term storage, aliquot and store at -20°C or below. Avoid multiple freeze-thaw cycles.
Concentration	1 mg/ml (Please refer to the vial label for the specific concentration.)
Immunogen	Recombinant protein encompassing a sequence within the center region of human Thymidylate synthase. The exact sequence is proprietary.
Purification	Affinity purified by Protein A.
Conjugation	Unconjugated

Note

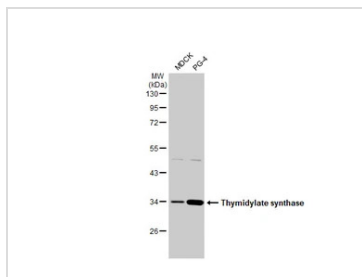
For laboratory research use only. Not for any clinical, therapeutic, or diagnostic use in humans or animals. Not for animal or human consumption.

Purchasers shall not, and agree not to enable third parties to, analyze, copy, reverse engineer or otherwise attempt to determine the structure or sequence of the product.

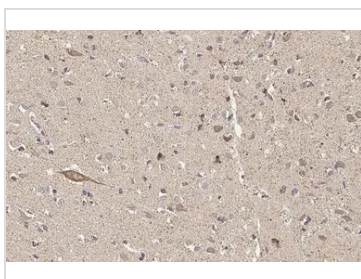


For full product information, images and publications, please visit our [website](#).

DATA IMAGES

**GTX636635 WB Image**

Various whole cell extracts (30 μ g) were separated by 10% SDS-PAGE, and the membrane was blotted with Thymidylate synthase antibody [HL1236] (GTX636635) diluted at 1:1000. The HRP-conjugated anti-rabbit IgG antibody (GTX213110-01) was used to detect the primary antibody.

**GTX636635 IHC-P Image**

Thymidylate synthase antibody [HL1236] detects Thymidylate synthase protein at cell membrane and cytoplasm by immunohistochemical analysis.

Sample: Paraffin-embedded cat brain.

Thymidylate synthase stained by Thymidylate synthase antibody [HL1236] (GTX636635) diluted at 1:100.

Antigen Retrieval: Citrate buffer, pH 6.0, 15 min

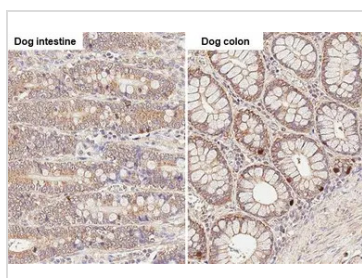
**GTX636635 IHC-P Image**

Thymidylate synthase antibody [HL1236] detects Thymidylate synthase protein at cell membrane and cytoplasm by immunohistochemical analysis.

Sample: Paraffin-embedded dog brain.

Thymidylate synthase stained by Thymidylate synthase antibody [HL1236] (GTX636635) diluted at 1:100.

Antigen Retrieval: Citrate buffer, pH 6.0, 15 min

**GTX636635 IHC-P Image**

Thymidylate synthase antibody [HL1236] detects Thymidylate synthase protein at cytoplasm by immunohistochemical analysis.

Sample: Paraffin-embedded dog tissue.

Thymidylate synthase stained by Thymidylate synthase antibody [HL1236] (GTX636635) diluted at 1:100.

Antigen Retrieval: Citrate buffer, pH 6.0, 15 min



For full product information, images and publications, please visit our [website](#).