

Androgen Receptor (ARv7 Splice Variant) antibody [HL1240]

Cat. No. GTX636639

Host	Rabbit
Clonality	Monoclonal
Isotype	IgG
Applications	WB, ICC/IF, IHC-P, IHC-P (cell pellet)
Reactivity	Human

★★★★★ Review (1)

Package
100 µl, 25 µl

Applications

Application Note

*Optimal dilutions/concentrations should be determined by the researcher.

Suggested dilution	Recommended dilution
WB	1:500-1:3000
ICC/IF	Assay dependent
IHC-P	1:100-1:1000
IHC-P (cell pellet)	Assay dependent

Not tested in other applications.

Observed MW (kDa) 90 kDa.

Properties

Form	Liquid
Buffer	PBS
Preservative	No preservatives
Storage	Store as concentrated solution. Centrifuge briefly prior to opening vial. For short-term storage (1-2 weeks), store at 4°C. For long-term storage, aliquot and store at -20°C or below. Avoid multiple freeze-thaw cycles.
Concentration	1 mg/ml (Please refer to the vial label for the specific concentration.)
Immunogen	Carrier-protein conjugated synthetic peptide encompassing a sequence within the C-terminus region of human Androgen Receptor (ARv7 Splice Variant). The exact sequence is proprietary.
Purification	Affinity purified by Protein A.
Conjugation	Unconjugated

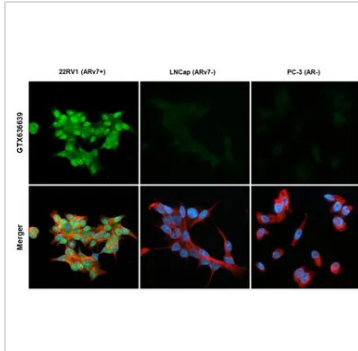
For full product information, images and publications, please visit our [website](#).

Date 2026 / 02 / 02 Page 1 of 2

For laboratory research use only. Not for any clinical, therapeutic, or diagnostic use in humans or animals. Not for animal or human consumption.

Note

Purchasers shall not, and agree not to enable third parties to, analyze, copy, reverse engineer or otherwise attempt to determine the structure or sequence of the product.

DATA IMAGES

GTx636639 ICC/IF Image

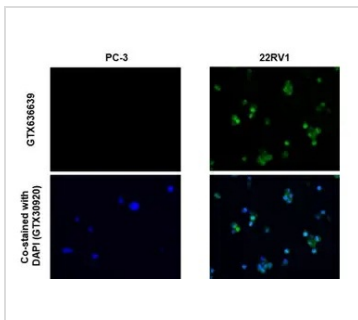
Androgen Receptor (ARv7 Splice Variant) antibody [HL1240] detects Androgen Receptor (ARv7 Splice Variant) protein by immunofluorescent analysis.

Sample: 22RV1, LNCap and PC-3 cells were fixed in 4% paraformaldehyde at RT for 15 min.

Green: Androgen Receptor (ARv7 Splice Variant) stained by Androgen Receptor (ARv7 Splice Variant) antibody [HL1240] (GTx636639) diluted at 1:500.

Red: alpha Tubulin, a cytoskeleton marker, stained by alpha Tubulin antibody [GT114] (GTx628802) diluted at 1:1000.

Blue: Fluoroshield with DAPI (GTx30920).


GTx636639 IHC-P (cell pellet) Image

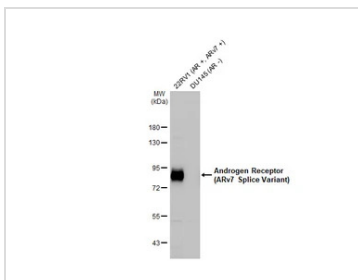
Androgen Receptor (ARv7 Splice Variant) antibody [HL1240] detects Androgen Receptor (ARv7 Splice Variant) protein at cytoplasm and nucleus by immunohistochemical analysis.

Sample: PC-3 and 22RV1 cell FFPE Cell Pellet Block.

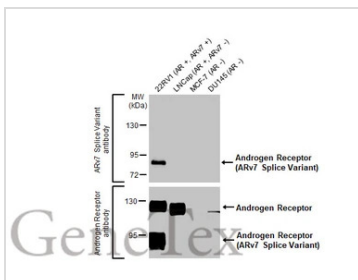
Green: Androgen Receptor (ARv7 Splice Variant) stained by Androgen Receptor (ARv7 Splice Variant) antibody [HL1240] (GTx636639) diluted at 1:200.

Blue: Fluoroshield with DAPI (GTx30920).

Antigen Retrieval: Citrate buffer, pH 6.0, 15 min


GTx636639 WB Image

Various whole cell extracts (30 µg) were separated by 7.5% SDS-PAGE, and the membrane was blotted with Androgen Receptor (ARv7 Splice Variant) antibody [HL1240] (GTx636639) diluted at 1:1000. The HRP-conjugated anti-rabbit IgG antibody (GTx213110-01) was used to detect the primary antibody.


GTx636639 WB Image

Various whole cell extracts (30 µg) were separated by 7.5% SDS-PAGE, and the membrane was blotted antibodies as follows:

Upper image : Androgen Receptor (ARv7 Splice Variant) antibody [HL1240], GTx636639 (1:1000)

Lower image : Androgen Receptor antibody [HL1049], GTx636021.

The HRP-conjugated anti-rabbit IgG antibody (GTx213110-01) was used to detect the primary antibody.



For full product information, images and publications, please visit our [website](https://www.genetex.com).