

Respiratory Syncytial virus Nucleoprotein antibody [HL1246]

Cat. No. GTX636648

Host	Rabbit
Clonality	Monoclonal
Isotype	IgG
Applications	WB, ICC/IF, IP, ELISA, Lateral Flow, Sandwich ELISA
Reactivity	Respiratory syncytial virus

References (1)

★★★★★ Review (2)

Package

100 µl, 25 µl

Applications

Application Note

*Optimal dilutions/concentrations should be determined by the researcher.

Suggested dilution	Recommended dilution
WB	1:1000-1:10000
ICC/IF	Assay dependent
IP	Assay dependent
ELISA	Assay dependent
Lateral Flow	Assay dependent
Sandwich ELISA	Assay dependent

Note : Capture : GTX636648 / GTX636649, Detection : GTX636650, or Capture : GTX636648 / GTX636650, Detection : GTX636649, or Capture : GTX636649 / GTX636650, Detection: GTX636648

Capture : GTX636648, Detection : GTX636649 / GTX636650 / GTX636709 or Capture : GTX636649 / GTX636650, Detection : GTX636648.

Please notice that the detection antibody needs to be conjugated to HRP when paired with the capture antibody.

Please contact us for custom HRP-conjugated antibody.

Not tested in other applications.

Properties

Form	Liquid
Buffer	PBS
Preservative	No preservatives
Storage	Store as concentrated solution. Centrifuge briefly prior to opening vial. For short-term storage (1-2 weeks), store at 4°C. For long-term storage, aliquot and store at -20°C or below. Avoid multiple freeze-thaw cycles.
Concentration	1 mg/ml (Please refer to the vial label for the specific concentration.)
Immunogen	Recombinant protein encompassing a sequence within the C-terminus region of Respiratory Syncytial virus Nucleoprotein. (strain A2)
Purification	Affinity purified by Protein A.



For full product information, images and publications, please visit our [website](#).

Date 2026 / 02 / 02 Page 1 of 2

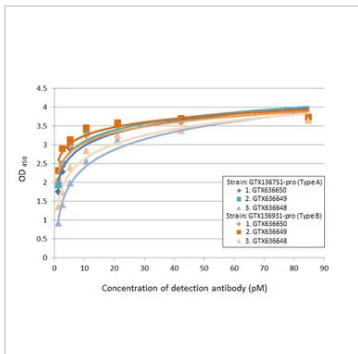
Conjugation

Unconjugated

For laboratory research use only. Not for any clinical, therapeutic, or diagnostic use in humans or animals. Not for animal or human consumption.

Note

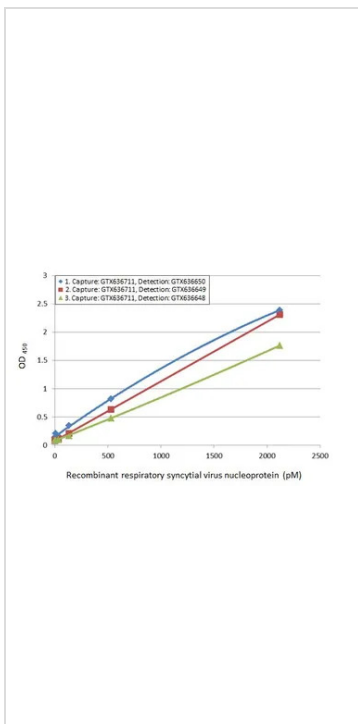
Purchasers shall not, and agree not to enable third parties to, analyze, copy, reverse engineer or otherwise attempt to determine the structure or sequence of the product.

DATA IMAGES

GTx636648 ELISA Image

Indirect ELISA analysis performed by coating plate with recombinant nucleoproteins (NP) derived from different strains of respiratory syncytial virus (i.e., type A; type B) (84.76-1.32 nM). Coated protein was probed with Respiratory Syncytial virus Nucleoprotein antibodies (1 µg/mL) below. Goat anti-rabbit IgG antibody (HRP) (GTx213110-01) (1:10000) was used to detect bound primary antibody.

Antibodies:

1. Respiratory Syncytial virus Nucleoprotein antibody [HL1248] (GTx636650)
2. Respiratory Syncytial virus Nucleoprotein antibody [HL1247] (GTx636649)
3. Respiratory Syncytial virus type A Nucleoprotein antibody [HL1246] (GTx636648)


GTx636648 ELISA Image

Sandwich ELISA detection of recombinant HEK293 expressed, full-length respiratory syncytial virus type A nucleoprotein, DDDDK tag (GTx136751-pro) using ELISA pairs below. The amount of capture and detection antibodies are 5 and 1 µg/mL, respectively.

Pair 1:

Capture: Respiratory Syncytial virus type A Nucleoprotein antibody [HL1297] (GTx636711)

Detection:

Respiratory Syncytial virus Nucleoprotein antibody [HL1248] (GTx636650) conjugated with HRP

Pair 2:

Capture: Respiratory Syncytial virus type A Nucleoprotein antibody [HL1297] (GTx636711)

Detection:

Respiratory Syncytial virus Nucleoprotein antibody [HL1247] (GTx636649) conjugated with HRP

Pair 3:

Capture: Respiratory Syncytial virus type A Nucleoprotein antibody [HL1297] (GTx636711)

Detection:

Respiratory Syncytial virus type A Nucleoprotein antibody [HL1246] (GTx636648) conjugated with HRP

Please notice that detection antibodies need to be conjugated to HRP to function when paired with capture one.

Please contact us for custom HRP-conjugated antibody.



For full product information, images and publications, please visit our [website](https://www.genetex.com).