

## Respiratory Syncytial virus Nucleoprotein antibody [HL1246]

**Cat. No. GTX636648**

<b>Host</b>	Rabbit
<b>Clonality</b>	Monoclonal
<b>Isotype</b>	IgG
<b>Applications</b>	WB, ICC/IF, IP, ELISA, Lateral Flow, Sandwich ELISA
<b>Reactivity</b>	Respiratory syncytial virus

References ( 2 )

★★★★★ Review ( 2 )

Package

100 µl, 25 µl

## Applications

**Application Note**

\*Optimal dilutions/concentrations should be determined by the researcher.

Suggested dilution	Recommended dilution
WB	1:1000-1:10000
ICC/IF	Assay dependent
IP	Assay dependent
ELISA	Assay dependent
Lateral Flow	Assay dependent
Sandwich ELISA	Assay dependent

**Note : Capture : GTX636648 / GTX636649, Detection : GTX636650, or Capture : GTX636648 / GTX636650, Detection : GTX636649, or Capture : GTX636649 / GTX636650, Detection: GTX636648**

**Capture : GTX636648, Detection : GTX636649 / GTX636650 / GTX636709 or Capture : GTX636649 / GTX636650, Detection : GTX636648.**

**Please notice that the detection antibody needs to be conjugated to HRP when paired with the capture antibody.**

**Please contact us for custom HRP-conjugated antibody.**

Not tested in other applications.

## Properties

<b>Form</b>	Liquid
<b>Buffer</b>	PBS
<b>Preservative</b>	No preservatives
<b>Storage</b>	Store as concentrated solution. Centrifuge briefly prior to opening vial. For short-term storage (1-2 weeks), store at 4°C. For long-term storage, aliquot and store at -20°C or below. Avoid multiple freeze-thaw cycles.
<b>Concentration</b>	1 mg/ml (Please refer to the vial label for the specific concentration.)
<b>Immunogen</b>	Recombinant protein encompassing a sequence within the C-terminus region of Respiratory Syncytial virus Nucleoprotein. (strain A2)
<b>Purification</b>	Affinity purified by Protein A.



For full product information, images and publications, please visit our [website](#).

Date 2026 / 04 / 04 Page 1 of 2

**Conjugation**

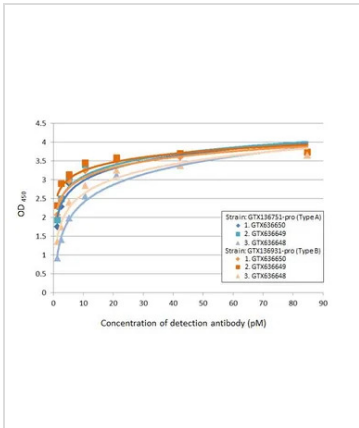
Unconjugated

For laboratory research use only. Not for any clinical, therapeutic, or diagnostic use in humans or animals. Not for animal or human consumption.

**Note**

Purchasers shall not, and agree not to enable third parties to, analyze, copy, reverse engineer or otherwise attempt to determine the structure or sequence of the product.

DATA IMAGES



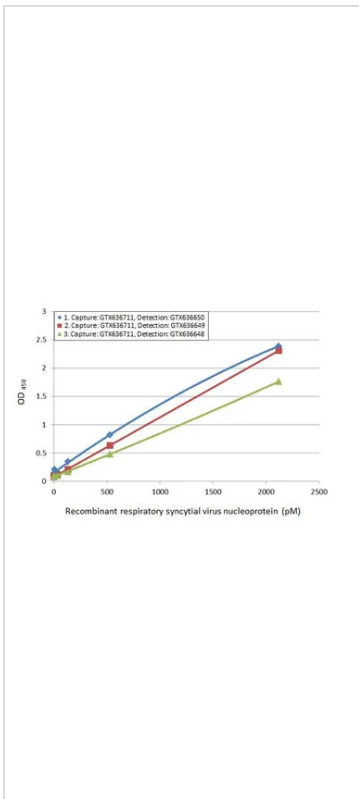
**GTX636648 ELISA Image**

Indirect ELISA analysis performed by coating plate with recombinant nucleoproteins (NP) derived from different strains of respiratory syncytial virus (i.e., type A; type B) (84.76-1.32 nM). Coated protein was probed with Respiratory Syncytial virus Nucleoprotein antibodies (1 µg/mL) below. Goat anti-rabbit IgG antibody (HRP) (GTX213110-01) (1:10000) was used to detect bound primary antibody.

Antibodies:

1. Respiratory Syncytial virus Nucleoprotein antibody [HL1248] (GTX636650)
2. Respiratory Syncytial virus Nucleoprotein antibody [HL1247] (GTX636649)
3. Respiratory Syncytial virus type A Nucleoprotein antibody [HL1246] (GTX636648)

\*The competitor is not affiliated with GeneTex and does not endorse this product.



**GTX636648 ELISA Image**

Sandwich ELISA detection of recombinant HEK293 expressed, full-length respiratory syncytial virus type A nucleoprotein, DDDDK tag (GTX136751-pro) using ELISA pairs below. The amount of capture and detection antibodies are 5 and 1 µg/mL, respectively.

Pair 1:

**Capture:** Respiratory Syncytial virus type A Nucleoprotein antibody [HL1297] (GTX636711)

**Detection:**

Respiratory Syncytial virus Nucleoprotein antibody [HL1248] (GTX636650) conjugated with HRP

Pair 2:

**Capture:** Respiratory Syncytial virus type A Nucleoprotein antibody [HL1297] (GTX636711)

**Detection:**

Respiratory Syncytial virus Nucleoprotein antibody [HL1247] (GTX636649) conjugated with HRP

Pair 3:

**Capture:** Respiratory Syncytial virus type A Nucleoprotein antibody [HL1297] (GTX636711)

**Detection:**

Respiratory Syncytial virus type A Nucleoprotein antibody [HL1246] (GTX636648) conjugated with HRP

Please notice that detection antibodies need to be conjugated to HRP to function when paired with capture one.

Please contact us for custom HRP-conjugated antibody.

\*The competitor is not affiliated with GeneTex and does not endorse this product.



For full product information, images and publications, please visit our [website](#).