

## Strep epitope Tag antibody [HL1251]

**Cat. No. GTX636653**

<b>Host</b>	Rabbit
<b>Clonality</b>	Monoclonal
<b>Isotype</b>	IgG
<b>Applications</b>	WB, ICC/IF, IP, IHC-P (cell pellet)
<b>Reactivity</b>	Species independent

**Package**  
100 µl, 25 µl

## Applications

**Application Note**

\*Optimal dilutions/concentrations should be determined by the researcher.

Suggested dilution	Recommended dilution
WB	1:500-1:3000
ICC/IF	Assay dependent
IP	Assay dependent
IHC-P (cell pellet)	Assay dependent

Not tested in other applications.

## Properties

<b>Form</b>	Liquid
<b>Buffer</b>	PBS
<b>Preservative</b>	No preservatives
<b>Storage</b>	Store as concentrated solution. Centrifuge briefly prior to opening vial. For short-term storage (1-2 weeks), store at 4°C. For long-term storage, aliquot and store at -20°C or below. Avoid multiple freeze-thaw cycles.
<b>Concentration</b>	1 mg/ml (Please refer to the vial label for the specific concentration.)
<b>Immunogen</b>	The immunogen used to generate this antibody corresponds to Strep epitope Tag
<b>Purification</b>	Affinity purified by Protein A.
<b>Conjugation</b>	Unconjugated

**Note**

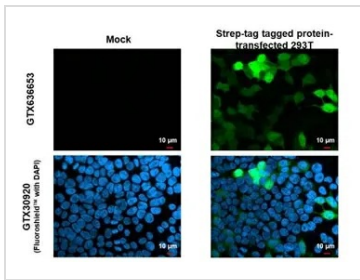
For laboratory research use only. Not for any clinical, therapeutic, or diagnostic use in humans or animals. Not for animal or human consumption.

Purchasers shall not, and agree not to enable third parties to, analyze, copy, reverse engineer or otherwise attempt to determine the structure or sequence of the product.



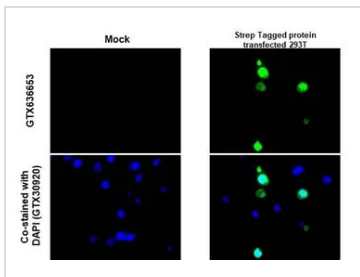
For full product information, images and publications, please visit our [website](#).

DATA IMAGES



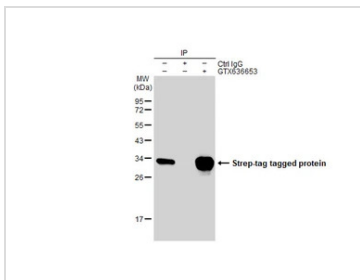
**GTX636653 ICC/IF Image**

Strep epitope Tag antibody [HL1251] detects Strep epitope Tag protein by immunofluorescent analysis. Sample: Mock and transfected 293T cells were fixed in 4% paraformaldehyde at RT for 15 min. Green: Strep epitope Tag stained by Strep epitope Tag antibody [HL1251] (GTX636653) diluted at 1:500. Blue: Fluoroshield with DAPI (GTX30920).



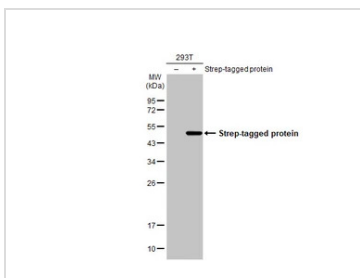
**GTX636653 IHC-P (cell pellet) Image**

Strep epitope Tag antibody [HL1251] detects Strep epitope Tag protein at cytoplasm by immunohistochemical analysis. Sample: Paraffin-embedded mock and Strep Tagged protein transfected 293T cell pellet. Green: Strep epitope Tag stained by Strep epitope Tag antibody [HL1251] (GTX636653) diluted at 1:1000. Antigen Retrieval: Citrate buffer, pH 6.0, 15 min



**GTX636653 IP Image**

Immunoprecipitation of Strep epitope Tag protein from 293T whole cell extracts using 5 μg of Strep epitope Tag antibody [HL1251] (GTX636653). Western blot analysis was performed using Strep epitope Tag antibody [HL1251] (GTX636653). EasyBlot HRP-conjugated anti rabbit IgG antibody (GTX221666-01).



**GTX636653 WB Image**

Non-transfected (-) and transfected (+) 293T whole cell extracts (30 μg) were separated by 12% SDS-PAGE, and the membrane was blotted with Strep epitope Tag antibody [HL1251] (GTX636653) diluted at 1:1000. The HRP-conjugated anti-rabbit IgG antibody (GTX213110-01) was used to detect the primary antibody.



For full product information, images and publications, please visit our [website](#).