

MMP1 antibody [HL1259]

Cat. No. GTX636661

Host	Rabbit
Clonality	Monoclonal
Isotype	IgG
Applications	WB, ICC/IF
Reactivity	Human

Package
100 µl, 25 µl

Applications

Application Note

*Optimal dilutions/concentrations should be determined by the researcher.

Suggested dilution	Recommended dilution
WB	Assay dependent
ICC/IF	Assay dependent

Not tested in other applications.

Observed MW (kDa) 54 kDa.

Properties

Form	Liquid
Buffer	PBS
Preservative	No preservatives
Storage	Store as concentrated solution. Centrifuge briefly prior to opening vial. For short-term storage (1-2 weeks), store at 4°C. For long-term storage, aliquot and store at -20°C or below. Avoid multiple freeze-thaw cycles.
Concentration	1 mg/ml (Please refer to the vial label for the specific concentration.)
Immunogen	Recombinant protein encompassing a sequence within the center region of Human MMP1. The exact sequence is proprietary.
Purification	Affinity purified by Protein A.
Conjugation	Unconjugated

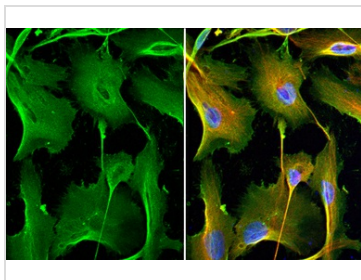
Note For laboratory research use only. Not for any clinical, therapeutic, or diagnostic use in humans or animals. Not for animal or human consumption.

Purchasers shall not, and agree not to enable third parties to, analyze, copy, reverse engineer or otherwise attempt to determine the structure or sequence of the product.



For full product information, images and publications, please visit our [website](#).

DATA IMAGES

**GTX636661 ICC/IF Image**

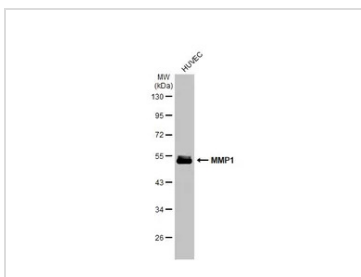
MMP1 antibody [HL1259] detects MMP1 protein by immunofluorescent analysis.

Sample: MDA-MB-231 cells were fixed in 4% paraformaldehyde at RT for 15 min.

Green: MMP1 stained by MMP1 antibody [HL1259] (GTX636661) diluted at 1:200.

Red: alpha Tubulin, a cytoskeleton marker, stained by alpha Tubulin antibody [GT114] (GTX628802) diluted at 1:1000.

Blue: Fluoroshield with DAPI (GTX30920).

**GTX636661 WB Image**

Whole cell extract (30 µg) was separated by 10% SDS-PAGE, and the membrane was blotted with MMP1 antibody [HL1259] (GTX636661) diluted at 1:1000. The HRP-conjugated anti-rabbit IgG antibody (GTX213110-01) was used to detect the primary antibody.



For full product information, images and publications, please visit our [website](#).