

## Influenza A virus M1 (matrix protein) antibody [HL1273]

Cat. No. GTX636675

<b>Host</b>	Rabbit
<b>Clonality</b>	Monoclonal
<b>Isotype</b>	IgG
<b>Applications</b>	WB, ICC/IF, IHC-P (cell pellet)
<b>Reactivity</b>	Influenza A virus

References ( 1 )

Package

100 µl, 25 µl

## Applications

## Application Note

\*Optimal dilutions/concentrations should be determined by the researcher.

Suggested dilution	Recommended dilution
WB	1:1000-1:10000
ICC/IF	Assay dependent
IHC-P (cell pellet)	Assay dependent

Not tested in other applications.

**Product Note** This antibody is specific for Influenza A virus M1 protein (H1N1), and it does not cross-react with Influenza B virus M1 protein.

## Properties

<b>Form</b>	Liquid
<b>Buffer</b>	PBS
<b>Preservative</b>	No preservatives
<b>Storage</b>	Store as concentrated solution. Centrifuge briefly prior to opening vial. For short-term storage (1-2 weeks), store at 4°C. For long-term storage, aliquot and store at -20°C or below. Avoid multiple freeze-thaw cycles.
<b>Concentration</b>	1 mg/ml (Please refer to the vial label for the specific concentration.)
<b>Immunogen</b>	Recombinant fragment corresponding to C-terminal region of Influenza A virus M1 (A/Puerto Rico/8/1934(H1N1)). The exact sequence is proprietary.
<b>Purification</b>	Affinity purified by Protein A.
<b>Conjugation</b>	Unconjugated

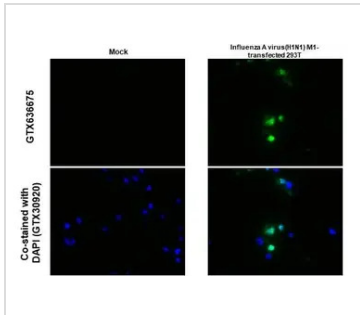


For full product information, images and publications, please visit our [website](#).

For laboratory research use only. Not for any clinical, therapeutic, or diagnostic use in humans or animals. Not for animal or human consumption.

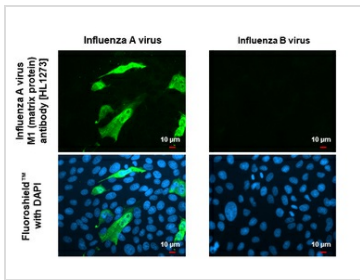
**Note**  
 Purchasers shall not, and agree not to enable third parties to, analyze, copy, reverse engineer or otherwise attempt to determine the structure or sequence of the product.

DATA IMAGES



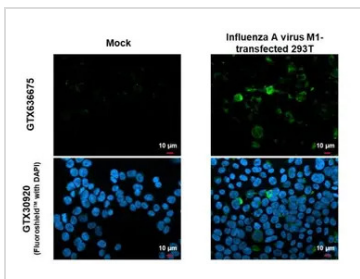
**GTX636675 IHC-P (cell pellet) Image**

Influenza A virus M1 (matrix protein) antibody [HL1273] detects Influenza A virus M1 (matrix protein) protein at cytoplasm by immunohistochemical analysis.  
 Sample: Paraffin-embedded Influenza A virus M1 transfected 293T.  
 Green: Influenza A virus M1 (matrix protein) stained by Influenza A virus M1 (matrix protein) antibody [HL1273] (GTX636675) diluted at 1:1000.  
 Blue: Fluoroshield with DAPI (GTX30920).  
 Antigen Retrieval: Citrate buffer, pH 6.0, 15 min



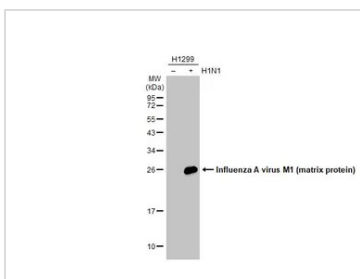
**GTX636675 ICC/IF Image**

Immunofluorescent analysis of Influenza virus infected cells using Influenza A virus M1 (matrix protein) antibody [HL1273] (GTX636675).  
 Sample: Influenza A and B virus infected cells slide.  
 Green: Influenza A virus M1 (matrix protein) antibody [HL1273] (GTX636675) diluted at 1:100.  
 Blue: Fluoroshield with DAPI (GTX30920).



**GTX636675 ICC/IF Image**

Influenza A virus M1 (matrix protein) antibody [HL1273] detects Influenza A virus M1 (matrix protein) protein by immunofluorescent analysis.  
 Sample: Mock and transfected 293T cells were fixed in 4% paraformaldehyde at RT for 15 min.  
 Green: Influenza A virus M1 (matrix protein) stained by Influenza A virus M1 (matrix protein) antibody [HL1273] (GTX636675) diluted at 1:500.  
 Blue: Fluoroshield with DAPI (GTX30920).



**GTX636675 WB Image**

Non-infected (-) and infected (+) H1299 whole cell extracts (15 µg) were separated by 12% SDS-PAGE, and the membrane was blotted with Influenza A virus M1 (matrix protein) antibody [HL1273] (GTX636675) diluted at 1:5000. The HRP-conjugated anti-rabbit IgG antibody (GTX213110-01) was used to detect the primary antibody.



For full product information, images and publications, please visit our [website](#).