

Tau (phospho Thr217) antibody [HL1276]

Cat. No. GTX636678

Host	Rabbit
Clonality	Monoclonal
Isotype	IgG
Applications	WB, ELISA
Reactivity	Human

Package
100 µl, 25 µl

Applications

Application Note

*Optimal dilutions/concentrations should be determined by the researcher.

Suggested dilution	Recommended dilution
WB	Assay dependent
ELISA	Assay dependent

Not tested in other applications.

Observed MW (kDa) 50-80 kDa.

Properties

Form	Liquid
Buffer	PBS
Preservative	No preservative
Storage	Store as concentrated solution. Centrifuge briefly prior to opening vial. For short-term storage (1-2 weeks), store at 4°C. For long-term storage, aliquot and store at -20°C or below. Avoid multiple freeze-thaw cycles.
Concentration	1 mg/ml (Please refer to the vial label for the specific concentration.)
Immunogen	Carrier-protein conjugated synthetic peptide surrounding phospho Thr217 of human Tau. The exact sequence is proprietary.
Purification	Affinity purified by Protein A.
Conjugation	Unconjugated

Note

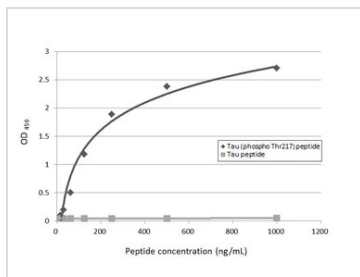
For laboratory research use only. Not for any clinical, therapeutic, or diagnostic use in humans or animals. Not for animal or human consumption.

Purchasers shall not, and agree not to enable third parties to, analyze, copy, reverse engineer or otherwise attempt to determine the structure or sequence of the product.



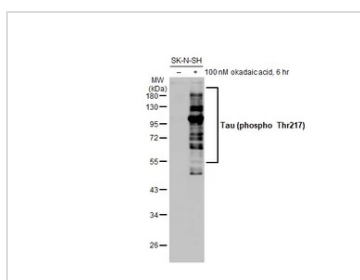
For full product information, images and publications, please visit our [website](#).

DATA IMAGES



GTx636678 ELISA Image

Indirect ELISA analysis was performed by coating the plate with Tau peptide and Tau (phospho Thr217) peptide (1000-15.63 ng/mL). Coated peptides were probed with Tau (phospho Thr217) antibody [HL1276] (GTx636678) (1 µg/mL). Goat anti-rabbit IgG antibody (HRP) (GTx213110-01) (1:10000) was used to detect the bound primary antibody.



GTx636678 WB Image

Untreated (-) and treated (+) SK-N-SH whole cell extracts (30 µg) were separated by 10% SDS-PAGE, and the membrane was blotted with Tau (phospho Thr217) antibody [HL1276] (GTx636678) diluted at 1:1000. The HRP-conjugated anti-rabbit IgG antibody (GTx213110-01) was used to detect the primary antibody.



For full product information, images and publications, please visit our [website](https://www.genetex.com).