

BRD9 antibody [HL1282]

Cat. No. GTX636696

Host	Rabbit
Clonality	Monoclonal
Isotype	IgG
Applications	WB, ICC/IF, IHC-P
Reactivity	Human, Mouse, Rat

Package
100 µl, 25 µl

Applications

Application Note

*Optimal dilutions/concentrations should be determined by the researcher.

Suggested dilution	Recommended dilution
WB	1:500-1:3000
ICC/IF	Assay dependent
IHC-P	Assay dependent

Not tested in other applications.

Observed MW (kDa) 74 kDa.

Properties

Form	Liquid
Buffer	PBS
Preservative	No preservatives
Storage	Store as concentrated solution. Centrifuge briefly prior to opening vial. For short-term storage (1-2 weeks), store at 4°C. For long-term storage, aliquot and store at -20°C or below. Avoid multiple freeze-thaw cycles.
Concentration	1 mg/ml (Please refer to the vial label for the specific concentration.)
Immunogen	Recombinant protein encompassing a sequence within the N-terminus region of human BRD9. The exact sequence is proprietary.
Purification	Affinity purified by Protein A.
Conjugation	Unconjugated

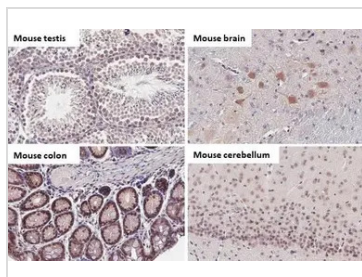
Note

For laboratory research use only. Not for any clinical, therapeutic, or diagnostic use in humans or animals. Not for animal or human consumption.

Purchasers shall not, and agree not to enable third parties to, analyze, copy, reverse engineer or otherwise attempt to determine the structure or sequence of the product.



For full product information, images and publications, please visit our [website](#).

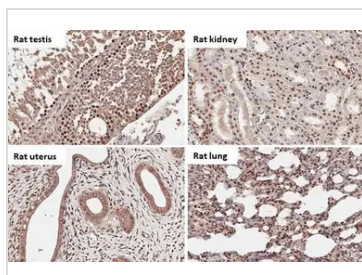
DATA IMAGES

GTX636696 IHC-P Image

BRD9 antibody [HL1282] detects BRD9 protein by immunohistochemical analysis.

Sample: Paraffin-embedded mouse tissues.

BRD9 stained by BRD9 antibody [HL1282] (GTX636696) diluted at 1:100.

Antigen Retrieval: Citrate buffer, pH 6.0, 15 min

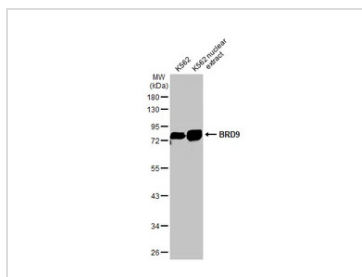

GTX636696 IHC-P Image

BRD9 antibody [HL1282] detects BRD9 protein by immunohistochemical analysis.

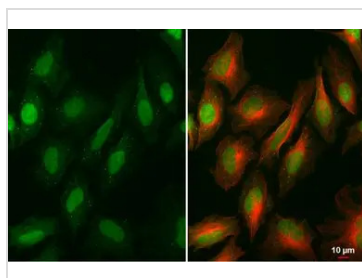
Sample: Paraffin-embedded rat tissues.

BRD9 stained by BRD9 antibody [HL1282] (GTX636696) diluted at 1:100.

Antigen Retrieval: Citrate buffer, pH 6.0, 15 min


GTX636696 WB Image

K562 whole cell and nuclear extracts (30 µg) were separated by 10% SDS-PAGE, and the membrane was blotted with BRD9 antibody [HL1282] (GTX636696) diluted at 1:1000. The HRP-conjugated anti-rabbit IgG antibody (GTX213110-01) was used to detect the primary antibody.

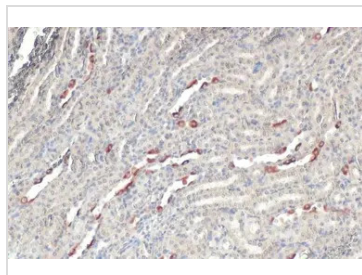

GTX636696 ICC/IF Image

BRD9 antibody [HL1282] detects BRD9 protein at nucleus by immunofluorescent analysis.

Sample: HeLa cells were fixed in 4% paraformaldehyde at RT for 15 min.

Green: BRD9 stained by BRD9 antibody [HL1282] (GTX636696) diluted at 1:500.

Red: alpha Tubulin, a cytoskeleton marker, stained by alpha Tubulin antibody [GT114] (GTX628802) diluted at 1:1000.


GTX636696 IHC-P Image

BRD9 antibody [HL1282] detects BRD9 protein at cell membrane and cytoplasm by immunohistochemical analysis.

Sample: Paraffin-embedded mouse kidney.

BRD9 stained by BRD9 antibody [HL1282] (GTX636696) diluted at 1:100.

Antigen Retrieval: Citrate buffer, pH 6.0, 15 min



For full product information, images and publications, please visit our [website](https://www.genetex.com).