

## ASFV p54 antibody [HL1287]

Cat. No. GTX636701

Host	Rabbit
Clonality	Monoclonal
Isotype	IgG
Applications	WB, ICC/IF, ELISA, Lateral Flow, Sandwich ELISA
Reactivity	African swine fever virus

★★★★★ Review ( 2 )

Package  
100 µl, 25 µl

## Applications

## Application Note

\*Optimal dilutions/concentrations should be determined by the researcher.

Suggested dilution	Recommended dilution
WB	1:5000-1:100000
ICC/IF	Assay dependent
ELISA	Assay dependent
Lateral Flow	Assay dependent
Sandwich ELISA	Assay dependent

**Note : Capture : GTX636701, Detection : GTX635691 / GTX636562 / GTX636703**

**Capture : GTX636701, Detection: GTX636703 / GTX636700 or Capture : GTX636703 / GTX636700, Detection: GTX636701.**

**Please notice that detection antibody needs to be conjugated to HRP to function as the detection antibody when paired with capture antibody. Please contact us for custom HRP-conjugated antibody.**

Not tested in other applications.

## Properties

Form	Liquid
Buffer	PBS
Preservative	No preservatives
Storage	Store as concentrated solution. Centrifuge briefly prior to opening vial. For short-term storage (1-2 weeks), store at 4°C. For long-term storage, aliquot and store at -20°C or below. Avoid multiple freeze-thaw cycles.
Concentration	1 mg/ml (Please refer to the vial label for the specific concentration.)
Immunogen	Recombinant protein encompassing a sequence within the center region of ASFV p54. (African swine fever virus (strain: BA71V))
Purification	Affinity purified by Protein A.
Conjugation	Unconjugated

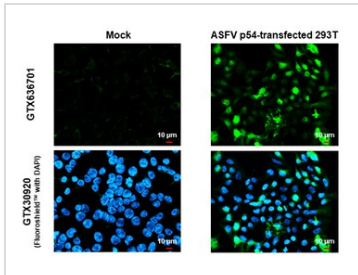


For full product information, images and publications, please visit our [website](#).

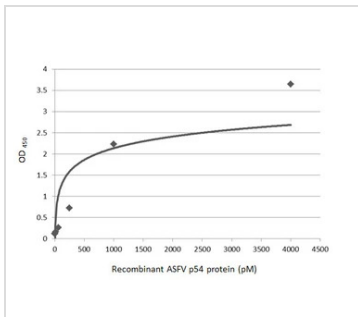
For laboratory research use only. Not for any clinical, therapeutic, or diagnostic use in humans or animals. Not for animal or human consumption.

**Note**

Purchasers shall not, and agree not to enable third parties to, analyze, copy, reverse engineer or otherwise attempt to determine the structure or sequence of the product.

**DATA IMAGES**

**GTx636701 ICC/IF Image**

ASFV p54 antibody [HL1287] detects ASFV p54 protein by immunofluorescent analysis. Sample: Mock and transfected 293T cells were fixed in 4% paraformaldehyde at RT for 15 min. Green: ASFV p54 stained by ASFV p54 antibody [HL1287] (GTx636701) diluted at 1:500. Blue: Fluoroshield with DAPI (GTx30920).

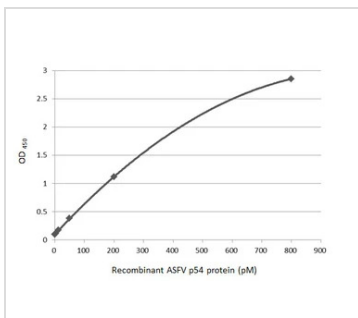

**GTx636701 ELISA Image**

Sandwich ELISA detection of recombinant HEK293 expressed, full-length ASFV p54 using antibodies as below.

**Capture:** ASFV p54 antibody [HL1289] (GTx636703) (5 μg/mL)

**Detection:** HRP-conjugated ASFV p54 antibody [HL1287] (GTx636701) (1 μg/mL)

Please notice that GTx636701 needs to be conjugated to HRP to function as the detection antibody when paired with GTx636703. Please contact us for custom HRP-conjugated antibody.

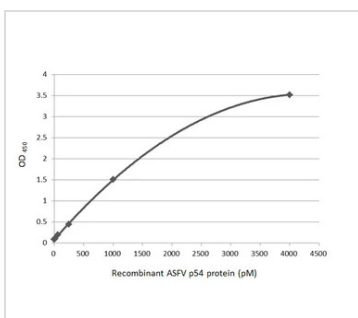

**GTx636701 ELISA Image**

Sandwich ELISA detection of recombinant HEK293 expressed, full-length ASFV p54 using antibodies as below.

**Capture:** ASFV p54 antibody [HL1287] (GTx636701) (5 μg/mL)

**Detection:** HRP-conjugated ASFV p54 antibody [HL1286] (GTx636700) (1 μg/mL)

Please notice that GTx636700 needs to be conjugated to HRP to function as the detection antibody when paired with GTx636701. Please contact us for custom HRP-conjugated antibody.


**GTx636701 ELISA Image**

Sandwich ELISA detection of recombinant HEK293 expressed, full-length ASFV p54 using antibodies as below.

**Capture:** ASFV p54 antibody [HL1287] (GTx636701) (5 μg/mL)

**Detection:** HRP-conjugated ASFV p54 antibody [HL1289] (GTx636703) (1 μg/mL)

Please notice that GTx636703 needs to be conjugated to HRP to function as the detection antibody when paired with GTx636701. Please contact us for custom HRP-conjugated antibody.



For full product information, images and publications, please visit our [website](https://www.genetex.com).