

## SARS-CoV-2 (COVID-19) nsp7 antibody [HL1301]

**Cat. No. GTX636719**

<b>Host</b>	Rabbit
<b>Clonality</b>	Monoclonal
<b>Isotype</b>	IgG
<b>Applications</b>	WB, ICC/IF, IHC-P (cell pellet)
<b>Reactivity</b>	SARS Coronavirus 2

References ( 3 )

Package

100 µl, 25 µl

## Applications

**Application Note**

\*Optimal dilutions/concentrations should be determined by the researcher.

Suggested dilution	Recommended dilution
WB	1:1000-1:10000
ICC/IF	Assay dependent
IHC-P (cell pellet)	Assay dependent

Not tested in other applications.

## Properties

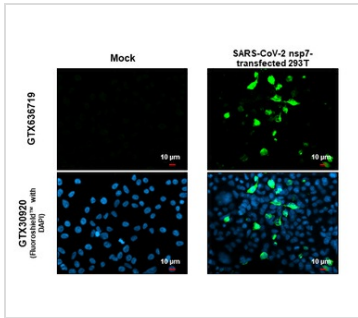
<b>Form</b>	Liquid
<b>Buffer</b>	PBS
<b>Preservative</b>	No preservatives
<b>Storage</b>	Store as concentrated solution. Centrifuge briefly prior to opening vial. For short-term storage (1-2 weeks), store at 4°C. For long-term storage, aliquot and store at -20°C or below. Avoid multiple freeze-thaw cycles.
<b>Concentration</b>	1 mg/ml (Please refer to the vial label for the specific concentration.)
<b>Immunogen</b>	Full length SARS-CoV-2 (COVID-19) nsp7 recombinant protein. (Strain:Wuhan-hu-1)
<b>Purification</b>	Affinity purified by Protein A.
<b>Conjugation</b>	Unconjugated

**Note**

For laboratory research use only. Not for any clinical, therapeutic, or diagnostic use in humans or animals. Not for animal or human consumption.

Purchasers shall not, and agree not to enable third parties to, analyze, copy, reverse engineer or otherwise attempt to determine the structure or sequence of the product.

For full product information, images and publications, please visit our [website](#).

**DATA IMAGES**

**GTx636719 ICC/IF Image**

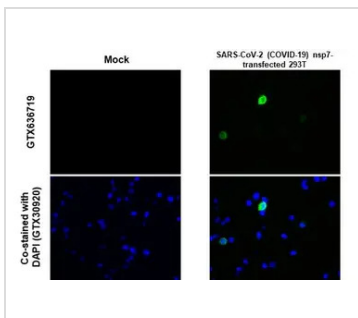
SARS-CoV-2 (COVID-19) nsp7 antibody [HL1301] detects SARS-CoV-2 (COVID-19) nsp7 protein at cytoplasm and nucleus by immunofluorescent analysis.

Sample: Mock and transfected 293T cells were fixed in 4% paraformaldehyde at RT for 15 min.

Green: SARS-CoV-2 (COVID-19) nsp7 stained by SARS-CoV-2 (COVID-19) nsp7 antibody [HL1301] (GTx636719) diluted at 1:500.

Blue: Fluoroshield with DAPI (GTx30920).

Scale bar= 10μm.


**GTx636719 IHC-P (cell pellet) Image**

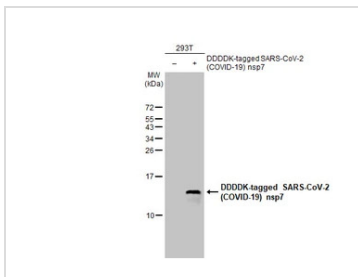
SARS-CoV-2 (COVID-19) nsp7 antibody [HL1301] detects SARS-CoV-2 (COVID-19) nsp7 protein at cytoplasm by immunohistochemical analysis.

Sample: SARS-CoV-2 (COVID-19) nsp7 transfected 293T cell FFPE Cell Pellet Block.

Green: SARS-CoV-2 (COVID-19) nsp7 stained by SARS-CoV-2 (COVID-19) nsp7 antibody [HL1301] (GTx636719) diluted at 1:1000.

Blue: Fluoroshield with DAPI (GTx30920).

Antigen Retrieval: Citrate buffer, pH 6.0, 15 min


**GTx636719 WB Image**

Non-transfected (-) and transfected (+) 293T whole cell extracts (30 μg) were separated by 15% SDS-PAGE, and the membrane was blotted with SARS-CoV-2 (COVID-19) nsp7 antibody [HL1301] (GTx636719) diluted at 1:5000. The HRP-conjugated anti-rabbit IgG antibody (GTx213110-01) was used to detect the primary antibody.



For full product information, images and publications, please visit our [website](https://www.genetex.com).