

GFAP antibody [HL1307]

Cat. No. GTX636725

Host	Rabbit
Clonality	Monoclonal
Isotype	IgG
Applications	WB, IHC-P, IHC-Fr, ELISA
Reactivity	Human, Mouse, Rat

Package
100 µl, 25 µl

Applications

Application Note

*Optimal dilutions/concentrations should be determined by the researcher.

Suggested dilution	Recommended dilution
WB	1:1000-1:10000
IHC-P	1:100-1:1000
IHC-Fr	Assay dependent
ELISA	Assay dependent

Not tested in other applications.

Observed MW (kDa) 43-50 kDa.

Properties

Form	Liquid
Buffer	PBS
Preservative	No preservatives
Storage	Store as concentrated solution. Centrifuge briefly prior to opening vial. For short-term storage (1-2 weeks), store at 4°C. For long-term storage, aliquot and store at -20°C or below. Avoid multiple freeze-thaw cycles.
Concentration	1 mg/ml (Please refer to the vial label for the specific concentration.)
Immunogen	Recombinant protein encompassing a sequence within the center region of human GFAP. The exact sequence is proprietary.
Purification	Affinity purified by Protein A.
Conjugation	Unconjugated

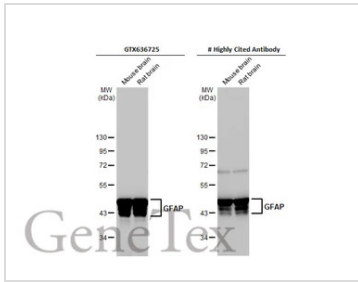
Note

For laboratory research use only. Not for any clinical, therapeutic, or diagnostic use in humans or animals. Not for animal or human consumption.

Purchasers shall not, and agree not to enable third parties to, analyze, copy, reverse engineer or otherwise attempt to determine the structure or sequence of the product.

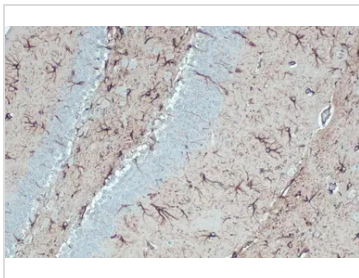


For full product information, images and publications, please visit our [website](#).

DATA IMAGES

GTX636725 WB Image

Various tissue extracts (50 µg) were separated by 10% SDS-PAGE, and the membranes were blotted with GFAP antibody [HL1307] (GTX636725) diluted at 1:3000 and competitor's antibody (CST 34001) diluted at 1:3000. The HRP-conjugated anti-rabbit IgG antibody (GTX213110-01) was used to detect the primary antibody.

*The competitor is not affiliated with GeneTex and does not endorse this product.

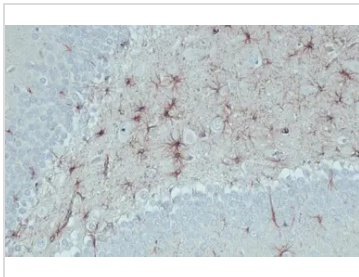

GTX636725 IHC-P Image

GFAP antibody [HL1307] detects GFAP protein at cytoplasm by immunohistochemical analysis.

Sample: Paraffin-embedded mouse brain.

GFAP stained by GFAP antibody [HL1307] (GTX636725) diluted at 1:100.

Antigen Retrieval: Citrate buffer, pH 6.0, 15 min

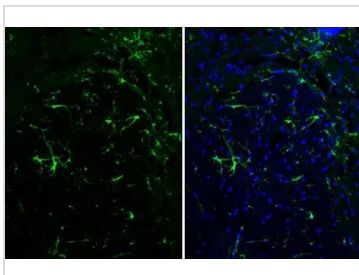

GTX636725 IHC-P Image

GFAP antibody [HL1307] detects GFAP protein at cytoplasm by immunohistochemical analysis.

Sample: Paraffin-embedded rat brain.

GFAP stained by GFAP antibody [HL1307] (GTX636725) diluted at 1:100.

Antigen Retrieval: Citrate buffer, pH 6.0, 15 min

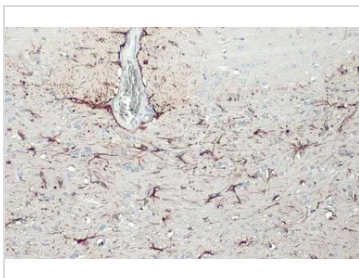

GTX636725 IHC-Fr Image

GFAP antibody [HL1307] detects GFAP protein at cytoplasm by immunohistochemical analysis.

Sample: Frozen-sectioned mouse spinal cord.

Green: GFAP stained by GFAP antibody [HL1307] (GTX636725) diluted at 1:100.

Blue: Fluoroshield with DAPI (GTX30920).


GTX636725 IHC-P Image

GFAP antibody [HL1307] detects GFAP protein at cytoplasm by immunohistochemical analysis.

Sample: Paraffin-embedded mouse brain.

GFAP stained by GFAP antibody [HL1307] (GTX636725) diluted at 1:100.

Antigen Retrieval: Citrate buffer, pH 6.0, 15 min



For full product information, images and publications, please visit our [website](https://www.genetex.com).