

GFAP antibody [HL1308]

Cat. No. GTX636726

| | |
|---------------------|-----------------------|
| Host | Rabbit |
| Clonality | Monoclonal |
| Isotype | IgG |
| Applications | ICC/IF, IHC-P, IHC-Fr |
| Reactivity | Mouse, Rat |

Package
100 µl, 25 µl

Applications

Application Note

*Optimal dilutions/concentrations should be determined by the researcher.

| Suggested dilution | Recommended dilution |
|--------------------|----------------------|
| ICC/IF | Assay dependent |
| IHC-P | 1:100-1:1000 |
| IHC-Fr | Assay dependent |

Not tested in other applications.

Properties

| | |
|----------------------|--|
| Form | Liquid |
| Buffer | PBS |
| Preservative | No preservatives |
| Storage | Store as concentrated solution. Centrifuge briefly prior to opening vial. For short-term storage (1-2 weeks), store at 4°C. For long-term storage, aliquot and store at -20°C or below. Avoid multiple freeze-thaw cycles. |
| Concentration | 1 mg/ml (Please refer to the vial label for the specific concentration.) |
| Immunogen | Recombinant protein encompassing a sequence within the center region of human GFAP. The exact sequence is proprietary. |
| Purification | Affinity purified by Protein A. |
| Conjugation | Unconjugated |

Note

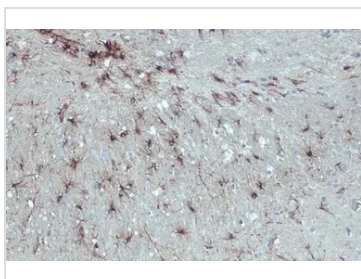
For laboratory research use only. Not for any clinical, therapeutic, or diagnostic use in humans or animals. Not for animal or human consumption.

Purchasers shall not, and agree not to enable third parties to, analyze, copy, reverse engineer or otherwise attempt to determine the structure or sequence of the product.



For full product information, images and publications, please visit our [website](#).

DATA IMAGES

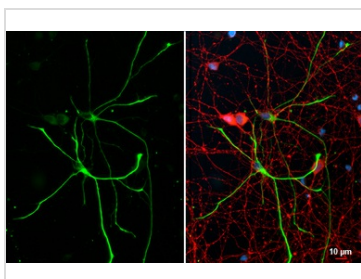
**GTX636726 IHC-P Image**

GFAP antibody [HL1308] detects GFAP protein at cytoplasm by immunohistochemical analysis.

Sample: Paraffin-embedded rat brain.

GFAP stained by GFAP antibody [HL1308] (GTX636726) diluted at 1:100.

Antigen Retrieval: Citrate buffer, pH 6.0, 15 min

**GTX636726 ICC/IF Image**

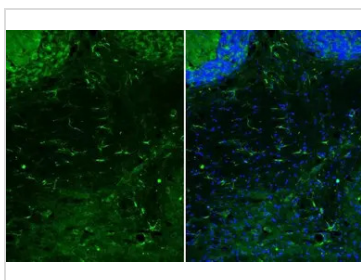
GFAP antibody [HL1308] detects GFAP protein at glia cells by immunofluorescent analysis.

Sample: DIV10 rat E18 primary hippocampal neuron and glia cells were fixed in 4% paraformaldehyde at RT for 15 min.

Green: GFAP stained by GFAP antibody [HL1308] (GTX636726) diluted at 1:250.

Red: Tau, a cytoskeleton marker, stained by Tau antibody [GT287] (GTX634809) diluted at 1:500.

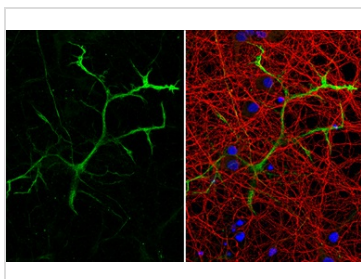
Blue: Fluoroshield with DAPI (GTX30920).

**GTX636726 IHC-Fr Image**

GFAP antibody [HL1308] detects GFAP protein by immunohistochemical analysis.

Sample: Frozen-sectioned mouse cerebellum.

Green: GFAP stained by GFAP antibody [HL1308] (GTX636726) diluted at 1:100.

**GTX636726 ICC/IF Image**

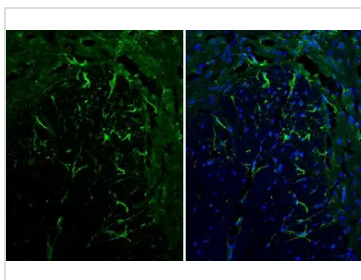
GFAP antibody [HL1308] detects GFAP protein at glia cells by immunofluorescent analysis.

Sample: DIV9 rat E18 primary cortical neuron and glia cells were fixed in 4% paraformaldehyde at RT for 15 min.

Green: GFAP stained by GFAP antibody [HL1308] (GTX636726) diluted at 1:250.

Red: Tau, an axon marker, stained by Tau antibody [GT287] (GTX634809) diluted at 1:500.

Blue: Fluoroshield with DAPI (GTX30920).

**GTX636726 IHC-Fr Image**

GFAP antibody [HL1308] detects GFAP protein at cytoplasm by immunohistochemical analysis.

Sample: Frozen-sectioned mouse spinal cord.

Green: GFAP stained by GFAP antibody [HL1308] (GTX636726) diluted at 1:100.

Blue: Fluoroshield with DAPI (GTX30920).



For full product information, images and publications, please visit our [website](#).