

# EpCAM antibody [HL1338]

**Cat. No. GTX636758**

<b>Host</b>	Rabbit
<b>Clonality</b>	Monoclonal
<b>Isotype</b>	IgG
<b>Applications</b>	WB, ICC/IF, IHC-P, FCM
<b>Reactivity</b>	Human, Mouse

**Package**  
100 µl, 25 µl

## Applications

### Application Note

\*Optimal dilutions/concentrations should be determined by the researcher.

Suggested dilution	Recommended dilution
WB	Assay dependent
ICC/IF	Assay dependent
IHC-P	1:100-1:1000
FCM	Assay dependent

Not tested in other applications.

**Observed MW (kDa)** 43 kDa.

**Product Note** This antibody was raised against human EpCAM Extracellular domain.

## Properties

<b>Form</b>	Liquid
<b>Buffer</b>	PBS
<b>Preservative</b>	No preservatives
<b>Storage</b>	Store as concentrated solution. Centrifuge briefly prior to opening vial. For short-term storage (1-2 weeks), store at 4°C. For long-term storage, aliquot and store at -20°C or below. Avoid multiple freeze-thaw cycles.
<b>Concentration</b>	1 mg/ml (Please refer to the vial label for the specific concentration.)
<b>Immunogen</b>	Recombinant protein encompassing a sequence within the Extracellular domain of human EpCAM. The exact sequence is proprietary.
<b>Purification</b>	Affinity purified by Protein A.
<b>Conjugation</b>	Unconjugated

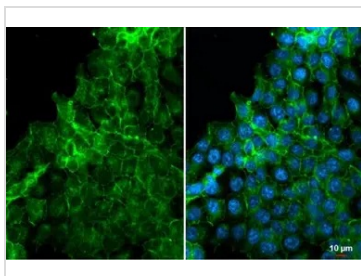


For full product information, images and publications, please visit our [website](#).

For laboratory research use only. Not for any clinical, therapeutic, or diagnostic use in humans or animals. Not for animal or human consumption.

**Note**

Purchasers shall not, and agree not to enable third parties to, analyze, copy, reverse engineer or otherwise attempt to determine the structure or sequence of the product.

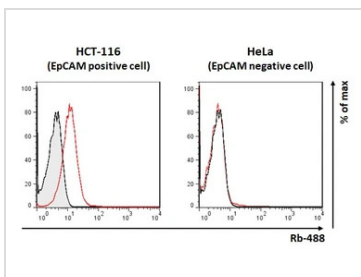
**DATA IMAGES**

**GTx636758 ICC/IF Image**

EpCAM antibody [HL1338] detects EpCAM protein at cell membrane and cell junction by immunofluorescent analysis.

Sample: HCT116 cells were fixed in ice-cold MeOH for 5 min.

Green: EpCAM stained by EpCAM antibody [HL1338] (GTx636758) diluted at 1:500.

Blue: Fluoroshield with DAPI (GTx30920).


**GTx636758 FCM Image**

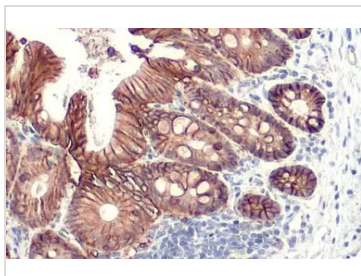
EpCAM antibody [HL1338] (GTx636758) detects EpCAM protein by flow cytometry analysis.

Sample: HCT-116 and HeLa cell.

Gray: Rabbit IgG Isotype control.

Red: EpCAM antibody [HL1338] (GTx636758) dilution: 1:50.

Acquisition of 50,000 events were collected for flow cytometry analysis.

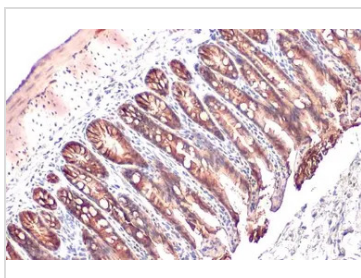

**GTx636758 IHC-P Image**

EpCAM antibody [HL1338] detects EpCAM protein at cell membrane by immunohistochemical analysis.

Sample: Paraffin-embedded mouse colon.

EpCAM stained by EpCAM antibody [HL1338] (GTx636758) diluted at 1:100.

Antigen Retrieval: Citrate buffer, pH 6.0, 15 min


**GTx636758 IHC-P Image**

EpCAM antibody [HL1338] detects EpCAM protein at cell membrane by immunohistochemical analysis.

Sample: Paraffin-embedded mouse intestine.

EpCAM stained by EpCAM antibody [HL1338] (GTx636758) diluted at 1:200.

Antigen Retrieval: Citrate buffer, pH 6.0, 15 min



For full product information, images and publications, please visit our [website](https://www.genetex.com).