

## GSPT1 antibody [HL1345]

**Cat. No. GTX636765**

<b>Host</b>	Rabbit
<b>Clonality</b>	Monoclonal
<b>Isotype</b>	IgG
<b>Applications</b>	WB, ICC/IF, IHC-P
<b>Reactivity</b>	Human, Mouse, Dog

**Package**  
100  $\mu$ l, 25  $\mu$ l

## Applications

**Application Note**

\*Optimal dilutions/concentrations should be determined by the researcher.

Suggested dilution	Recommended dilution
WB	1:5000-1:50000
ICC/IF	Assay dependent
IHC-P	1:100-1:1000

Not tested in other applications.

**Observed MW (kDa)** 80 kDa.

## Properties

<b>Form</b>	Liquid
<b>Buffer</b>	PBS
<b>Preservative</b>	No preservatives
<b>Storage</b>	Store as concentrated solution. Centrifuge briefly prior to opening vial. For short-term storage (1-2 weeks), store at 4°C. For long-term storage, aliquot and store at -20°C or below. Avoid multiple freeze-thaw cycles.
<b>Concentration</b>	1 mg/ml (Please refer to the vial label for the specific concentration.)
<b>Immunogen</b>	Recombinant protein encompassing a sequence within the center region of human GSPT1. The exact sequence is proprietary.
<b>Purification</b>	Affinity purified by Protein A.
<b>Conjugation</b>	Unconjugated

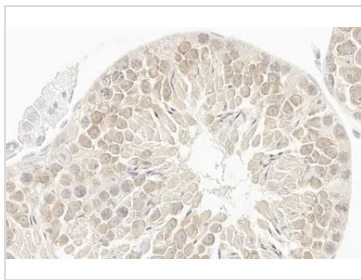
**Note** For laboratory research use only. Not for any clinical, therapeutic, or diagnostic use in humans or animals. Not for animal or human consumption.

Purchasers shall not, and agree not to enable third parties to, analyze, copy, reverse engineer or otherwise attempt to determine the structure or sequence of the product.



For full product information, images and publications, please visit our [website](#).

## DATA IMAGES

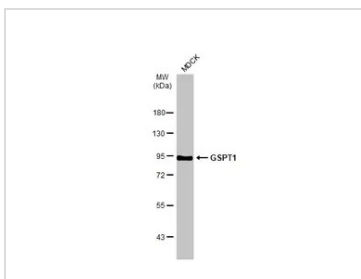
**GTX636765 IHC-P Image**

GSPT1 antibody [HL1345] detects GSPT1 protein by immunohistochemical analysis.

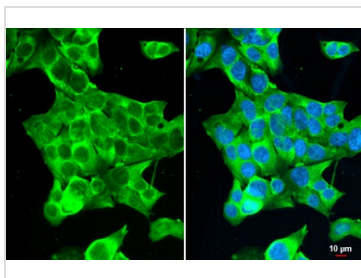
Sample: Paraffin-embedded mouse testis.

GSPT1 stained by GSPT1 antibody [HL1345] (GTX636765) diluted at 1:100.

Antigen Retrieval: Citrate buffer, pH 6.0, 15 min

**GTX636765 WB Image**

Whole cell extract (30 µg) was separated by 7.5% SDS-PAGE, and the membrane was blotted with GSPT1 antibody [HL1345] (GTX636765) diluted at 1:1000. The HRP-conjugated anti-rabbit IgG antibody (GTX213110-01) was used to detect the primary antibody.

**GTX636765 ICC/IF Image**

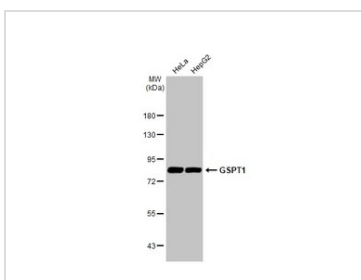
GSPT1 antibody [HL1345] detects GSPT1 protein at cytoplasm by immunofluorescent analysis.

Sample: HepG2 cells were fixed in 4% paraformaldehyde at RT for 15 min.

Green: GSPT1 stained by GSPT1 antibody [HL1345] (GTX636765) diluted at 1:500.

Blue: Fluoroshield with DAPI (GTX30920).

Scale bar= 10µm.

**GTX636765 WB Image**

Various whole cell extracts (30 µg) were separated by 7.5% SDS-PAGE, and the membrane was blotted with GSPT1 antibody [HL1345] (GTX636765) diluted at 1:50000. The HRP-conjugated anti-rabbit IgG antibody (GTX213110-01) was used to detect the primary antibody.



For full product information, images and publications, please visit our [website](#).