

GSPT1 antibody [HL1346]

Cat. No. GTX636766

Host	Rabbit
Clonality	Monoclonal
Isotype	IgG
Applications	WB, ICC/IF, IHC-P
Reactivity	Human, Mouse, Rat, Cat, Dog

Package
100 µl, 25 µl

Applications

Application Note

*Optimal dilutions/concentrations should be determined by the researcher.

Suggested dilution	Recommended dilution
WB	1:5000-1:20000
ICC/IF	Assay dependent
IHC-P	Assay dependent

Not tested in other applications.

Observed MW (kDa) 80 kDa.

Properties

Form	Liquid
Buffer	PBS
Preservative	No preservatives
Storage	Store as concentrated solution. Centrifuge briefly prior to opening vial. For short-term storage (1-2 weeks), store at 4°C. For long-term storage, aliquot and store at -20°C or below. Avoid multiple freeze-thaw cycles.
Concentration	1 mg/ml (Please refer to the vial label for the specific concentration.)
Immunogen	Recombinant protein encompassing a sequence within the center region of human GSPT1. The exact sequence is proprietary.
Purification	Affinity purified by Protein A.
Conjugation	Unconjugated

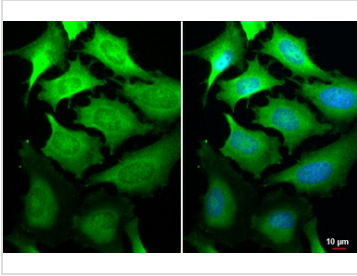
Note For laboratory research use only. Not for any clinical, therapeutic, or diagnostic use in humans or animals. Not for animal or human consumption.

Purchasers shall not, and agree not to enable third parties to, analyze, copy, reverse engineer or otherwise attempt to determine the structure or sequence of the product.



For full product information, images and publications, please visit our [website](#).

DATA IMAGES

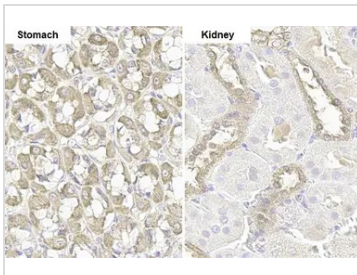
**GTX636766 ICC/IF Image**

GSPT1 antibody [HL1346] detects GSPT1 protein at cytoplasm by immunofluorescent analysis.

Sample: HeLa cells were fixed in 4% paraformaldehyde at RT for 15 min.

Green: GSPT1 stained by GSPT1 antibody [HL1346] (GTX636766) diluted at 1:500.

Blue: Fluoroshield with DAPI (GTX30920).

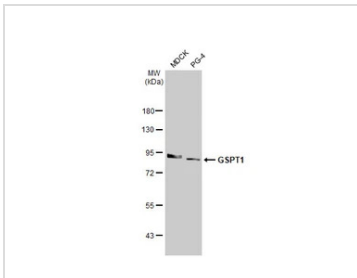
**GTX636766 IHC-P Image**

GSPT1 antibody [HL1346] detects GSPT1 protein by immunohistochemical analysis.

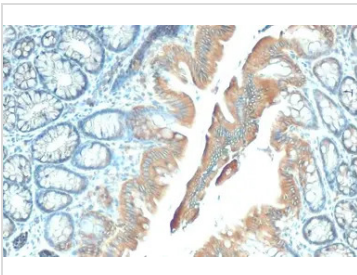
Sample: Paraffin-embedded rat tissues.

GSPT1 stained by GSPT1 antibody [HL1346] (GTX636766) diluted at 1:100.

Antigen Retrieval: Citrate buffer, pH 6.0, 15 min

**GTX636766 WB Image**

Various whole cell extracts (30 µg) were separated by 7.5% SDS-PAGE, and the membrane was blotted with GSPT1 antibody [HL1346] (GTX636766) diluted at 1:3000. The HRP-conjugated anti-rabbit IgG antibody (GTX213110-01) was used to detect the primary antibody.

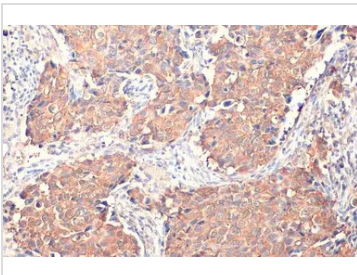
**GTX636766 IHC-P Image**

GSPT1 antibody [HL1346] detects GSPT1 protein at cytoplasm by immunohistochemical analysis.

Sample: Paraffin-embedded rat colon.

GSPT1 stained by GSPT1 antibody [HL1346] (GTX636766) diluted at 1:100.

Antigen Retrieval: Citrate buffer, pH 6.0, 15 min

**GTX636766 IHC-P Image**

GSPT1 antibody [HL1346] detects GSPT1 protein at cytoplasm by immunohistochemical analysis.

Sample: Paraffin-embedded human breast carcinoma.

GSPT1 stained by GSPT1 antibody [HL1346] (GTX636766) diluted at 1:100.

Antigen Retrieval: Citrate buffer, pH 6.0, 15 min



For full product information, images and publications, please visit our [website](#).