

NEK7 antibody [HL1348]

Cat. No. GTX636768

| | |
|---------------------|-------------------|
| Host | Rabbit |
| Clonality | Monoclonal |
| Isotype | IgG |
| Applications | WB, ICC/IF, IHC-P |
| Reactivity | Human, Mouse |

References (1)

Package

100 µl, 25 µl

Applications

Application Note

*Optimal dilutions/concentrations should be determined by the researcher.

| Suggested dilution | Recommended dilution |
|--------------------|----------------------|
| WB | 1:500-1:3000 |
| ICC/IF | Assay dependent |
| IHC-P | Assay dependent |

Not tested in other applications.

Observed MW (kDa) 35 kDa.

Properties

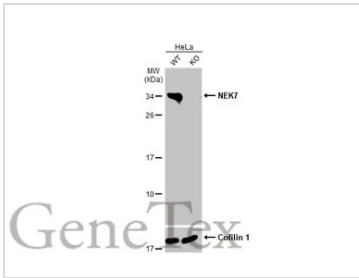
| | |
|----------------------|--|
| Form | Liquid |
| Buffer | PBS |
| Preservative | No preservatives |
| Storage | Store as concentrated solution. Centrifuge briefly prior to opening vial. For short-term storage (1-2 weeks), store at 4°C. For long-term storage, aliquot and store at -20°C or below. Avoid multiple freeze-thaw cycles. |
| Concentration | 1 mg/ml (Please refer to the vial label for the specific concentration.) |
| Immunogen | Carrier-protein conjugated synthetic peptide encompassing a sequence within the C-terminus region of human NEK7. The exact sequence is proprietary. |
| Purification | Affinity purified by Protein A. |
| Conjugation | Unconjugated |

Note

For laboratory research use only. Not for any clinical, therapeutic, or diagnostic use in humans or animals. Not for animal or human consumption.

Purchasers shall not, and agree not to enable third parties to, analyze, copy, reverse engineer or otherwise attempt to determine the structure or sequence of the product.

For full product information, images and publications, please visit our [website](#).

DATA IMAGES

GTK636768 WB Image

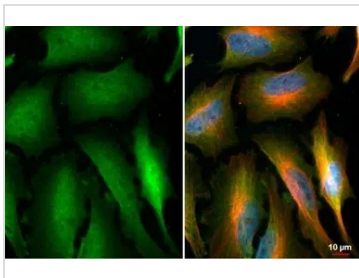
Wild-type (WT) and NEK7 knockout (KO) HeLa cell extracts (30 µg) were separated by 12% SDS-PAGE, and the membrane was blotted with NEK7 antibody [HL1348] (GTK636768) diluted at 1:1000. The HRP-conjugated anti-rabbit IgG antibody (GTK213110-01) was used to detect the primary antibody.


GTK636768 IHC-P Image

NEK7 antibody [HL1348] detects NEK7 protein at cytoplasm by immunohistochemical analysis. Sample: Paraffin-embedded mouse heart.

NEK7 stained by NEK7 antibody [HL1348] (GTK636768) diluted at 1:100.

Antigen Retrieval: Citrate buffer, pH 6.0, 15 min


GTK636768 ICC/IF Image

NEK7 antibody [HL1348] detects NEK7 protein at cytoplasm and nucleus by immunofluorescent analysis.

Sample: HeLa cells were fixed in 4% paraformaldehyde at RT for 15 min.

Green: NEK7 stained by NEK7 antibody [HL1348] (GTK636768) diluted at 1:500.

Red: alpha Tubulin, a cytoskeleton marker, stained by alpha Tubulin antibody [GT114] (GTK628802) diluted at 1:1000.

Blue: Fluoroshield with DAPI (GTK30920).

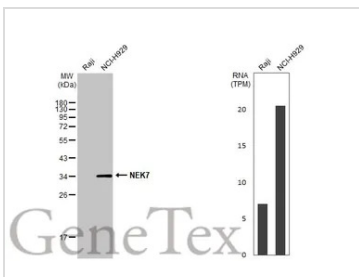

GTK636768 IHC-P Image

NEK7 antibody [HL1348] detects NEK7 protein at cytoplasm by immunohistochemical analysis.

Sample: Paraffin-embedded mouse muscle.

NEK7 stained by NEK7 antibody [HL1348] (GTK636768) diluted at 1:100.

Antigen Retrieval: Citrate buffer, pH 6.0, 15 min


GTK636768 WB Image

Various whole cell extracts (30 µg) were separated by 12% SDS-PAGE, and the membrane was blotted with NEK7 antibody [HL1348] (GTK636768) diluted at 1:1000. The HRP-conjugated anti-rabbit IgG antibody (GTK213110-01) was used to detect the primary antibody. Corresponding RNA expression data for the same cell lines are based on Human Protein Atlas program.



For full product information, images and publications, please visit our [website](https://www.genetex.com).