

## COL4A1 antibody [HL1351]

**Cat. No. GTX636771**

<b>Host</b>	Rabbit
<b>Clonality</b>	Monoclonal
<b>Isotype</b>	IgG
<b>Applications</b>	WB, ICC/IF, IHC-P
<b>Reactivity</b>	Human, Mouse

References ( 1 )

Package

100 µl, 25 µl

## Applications

**Application Note**

\*Optimal dilutions/concentrations should be determined by the researcher.

Suggested dilution	Recommended dilution
WB	1:500-1:3000
ICC/IF	Assay dependent
IHC-P	Assay dependent

Not tested in other applications.

**Observed MW (kDa)** 220 kDa.**Product Note** This antibody may not be suitable for mouse WB assay, as its mouse reactivity is based on IHC-P testing.

## Properties

<b>Form</b>	Liquid
<b>Buffer</b>	PBS
<b>Preservative</b>	No preservatives
<b>Storage</b>	Store as concentrated solution. Centrifuge briefly prior to opening vial. For short-term storage (1-2 weeks), store at 4°C. For long-term storage, aliquot and store at -20°C or below. Avoid multiple freeze-thaw cycles.
<b>Concentration</b>	1 mg/ml (Please refer to the vial label for the specific concentration.)
<b>Immunogen</b>	Recombinant protein encompassing a sequence within the N-terminus of human COL4A1. The exact sequence is proprietary.
<b>Purification</b>	Affinity purified by Protein A.
<b>Conjugation</b>	Unconjugated



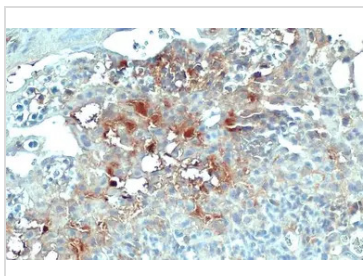
For full product information, images and publications, please visit our [website](#).

For laboratory research use only. Not for any clinical, therapeutic, or diagnostic use in humans or animals. Not for animal or human consumption.

**Note**

Purchasers shall not, and agree not to enable third parties to, analyze, copy, reverse engineer or otherwise attempt to determine the structure or sequence of the product.

## DATA IMAGES

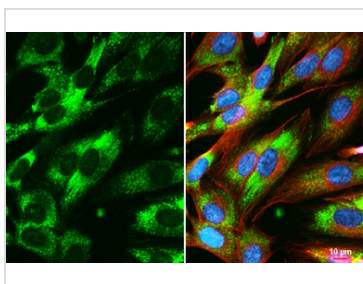
**GTX636771 IHC-P Image**

COL4A1 antibody [HL1351] detects COL4A1 protein at cell membrane and secreted by immunohistochemical analysis.

Sample: Paraffin-embedded mouse placenta.

COL4A1 stained by COL4A1 antibody [HL1351] (GTX636771) diluted at 1:100.

Antigen Retrieval: Citrate buffer, pH 6.0, 15 min

**GTX636771 ICC/IF Image**

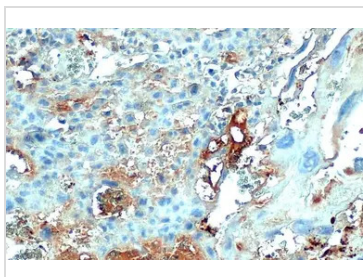
COL4A1 antibody [HL1351] detects COL4A1 protein at vesicle by immunofluorescent analysis.

Sample: SK-N-SH cells were fixed in 4% paraformaldehyde at RT for 15 min.

Green: COL4A1 stained by COL4A1 antibody [HL1351] (GTX636771) diluted at 1:500.

Red: alpha Tubulin, a cytoskeleton marker, stained by alpha Tubulin antibody [GT114] (GTX628802) diluted at 1:1000.

Blue: Fluoroshield with DAPI (GTX30920).

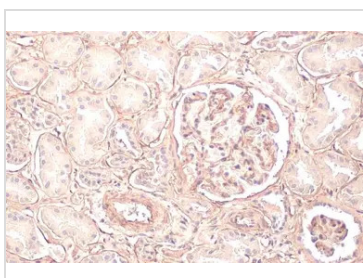
**GTX636771 IHC-P Image**

COL4A1 antibody [HL1351] detects COL4A1 protein at cell membrane and secreted by immunohistochemical analysis.

Sample: Paraffin-embedded mouse placenta.

COL4A1 stained by COL4A1 antibody [HL1351] (GTX636771) diluted at 1:100.

Antigen Retrieval: Citrate buffer, pH 6.0, 15 min

**GTX636771 IHC-P Image**

COL4A1 antibody [HL1351] detects COL4A1 protein at cell membrane by immunohistochemical analysis.

Sample: Paraffin-embedded human kidney.

COL4A1 stained by COL4A1 antibody [HL1351] (GTX636771) diluted at 1:50.

Antigen Retrieval: Citrate buffer, pH 6.0, 15 min



For full product information, images and publications, please visit our [website](#).