

## YTHDF2 antibody [HL1354]

**Cat. No. GTX636774**

<b>Host</b>	Rabbit
<b>Clonality</b>	Monoclonal
<b>Isotype</b>	IgG
<b>Applications</b>	WB, ICC/IF, IHC-P
<b>Reactivity</b>	Human, Mouse, Rat

**Package**  
100 µl, 25 µl

## Applications

**Application Note**

\*Optimal dilutions/concentrations should be determined by the researcher.

Suggested dilution	Recommended dilution
WB	1:500-1:3000
ICC/IF	Assay dependent
IHC-P	1:100-1:1000

Not tested in other applications.

**Observed MW (kDa)** 68, 75 kDa.**Product Note** This antibody is specific for human YTHDF2 protein, and it does not cross react with human YTHDF1 protein.

## Properties

<b>Form</b>	Liquid
<b>Buffer</b>	PBS
<b>Preservative</b>	No preservatives
<b>Storage</b>	Store as concentrated solution. Centrifuge briefly prior to opening vial. For short-term storage (1-2 weeks), store at 4°C. For long-term storage, aliquot and store at -20°C or below. Avoid multiple freeze-thaw cycles.
<b>Concentration</b>	1 mg/ml (Please refer to the vial label for the specific concentration.)
<b>Immunogen</b>	Carrier-protein conjugated synthetic peptide encompassing a sequence within the C-terminus region of human YTHDF2. The exact sequence is proprietary.
<b>Purification</b>	Affinity purified by Protein A.
<b>Conjugation</b>	Unconjugated



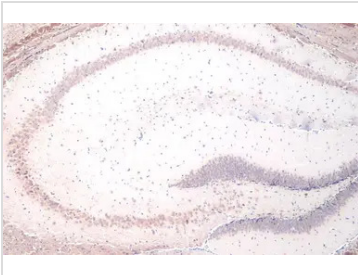
For full product information, images and publications, please visit our [website](#).

Date 2025 / 12 / 16 Page 1 of 2

For laboratory research use only. Not for any clinical, therapeutic, or diagnostic use in humans or animals. Not for animal or human consumption.

**Note**

Purchasers shall not, and agree not to enable third parties to, analyze, copy, reverse engineer or otherwise attempt to determine the structure or sequence of the product.

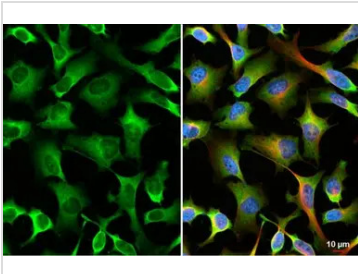
**DATA IMAGES**

**GTX636774 IHC-P Image**

YTHDF2 antibody [HL1354] detects YTHDF2 protein at cytoplasm by immunohistochemical analysis.

Sample: Paraffin-embedded mouse brain.

YTHDF2 stained by YTHDF2 antibody [HL1354] (GTX636774) diluted at 1:100.

Antigen Retrieval: Citrate buffer, pH 6.0, 15 min


**GTX636774 ICC/IF Image**

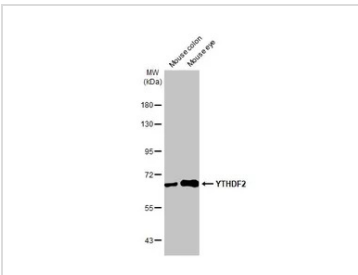
YTHDF2 antibody [HL1354] detects YTHDF2 protein at cytoplasm by immunofluorescent analysis.

Sample: HeLa cells were fixed in 4% paraformaldehyde at RT for 15 min.

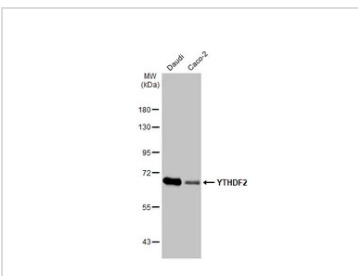
Green: YTHDF2 stained by YTHDF2 antibody [HL1354] (GTX636774) diluted at 1:500.

Red: alpha Tubulin, a cytoskeleton marker, stained by alpha Tubulin antibody [GT114] (GTX628802) diluted at 1:1000.

Blue: Fluoroshield with DAPI (GTX30920).


**GTX636774 WB Image**

Various tissue extracts (50 µg) were separated by 7.5% SDS-PAGE, and the membrane was blotted with YTHDF2 antibody [HL1354] (GTX636774) diluted at 1:1000. The HRP-conjugated anti-rabbit IgG antibody (GTX213110-01) was used to detect the primary antibody.


**GTX636774 WB Image**

Various whole cell extracts (30 µg) were separated by 7.5% SDS-PAGE, and the membrane was blotted with YTHDF2 antibody [HL1354] (GTX636774) diluted at 1:1000. The HRP-conjugated anti-rabbit IgG antibody (GTX213110-01) was used to detect the primary antibody.



For full product information, images and publications, please visit our [website](https://www.genetex.com).