

RGS1 antibody [HL1402]

Cat. No. GTX636868

Host	Rabbit
Clonality	Monoclonal
Isotype	IgG
Applications	WB, ICC/IF, IHC-P
Reactivity	Human, Mouse

Package
100 µl, 25 µl

Applications

Application Note

*Optimal dilutions/concentrations should be determined by the researcher.

Suggested dilution	Recommended dilution
WB	1:500-1:3000
ICC/IF	Assay dependent
IHC-P	Assay dependent

Not tested in other applications.

Observed MW (kDa) 24 kDa.

Properties

Form	Liquid
Buffer	PBS
Preservative	No preservative
Storage	Store as concentrated solution. Centrifuge briefly prior to opening vial. For short-term storage (1-2 weeks), store at 4°C. For long-term storage, aliquot and store at -20°C or below. Avoid multiple freeze-thaw cycles.
Concentration	1 mg/ml (Please refer to the vial label for the specific concentration.)
Immunogen	The immunogen used to generate this antibody corresponds to human RGS1.
Purification	Affinity purified by Protein A.
Conjugation	Unconjugated

Note

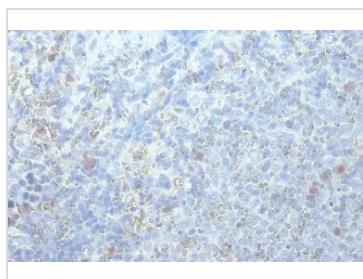
For laboratory research use only. Not for any clinical, therapeutic, or diagnostic use in humans or animals. Not for animal or human consumption.

Purchasers shall not, and agree not to enable third parties to, analyze, copy, reverse engineer or otherwise attempt to determine the structure or sequence of the product.

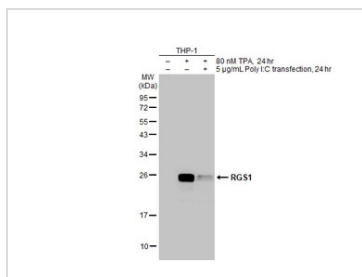


For full product information, images and publications, please visit our [website](#).

RGS1 antibody [HL1402] detects RGS1 protein at cell membrane by immunofluorescent analysis.
Sample: Mock and treated THP-1 cells were fixed in 4% paraformaldehyde at RT for 15 min.
Green: RGS1 stained by RGS1 antibody [HL1402] (GTX636868) diluted at 1:100.
Blue: Fluoroshield with DAPI (GTX30920).



RGS1 antibody [HL1402] detects RGS1 protein at cytoplasm by immunohistochemical analysis.
Sample: Paraffin-embedded mouse spleen.
RGS1 stained by RGS1 antibody [HL1402] (GTX636868) diluted at 1:100.
Antigen Retrieval: Citrate buffer, pH 6.0, 15 min



Untreated (–) and treated (+) THP-1 whole cell extracts (30 µg) were separated by 12% SDS-PAGE, and the membrane was blotted with RGS1 antibody [HL1402] (GTX636868) diluted at 1:1000. The HRP-conjugated anti-rabbit IgG antibody (GTX213110-01) was used to detect the primary antibody.



For full product information, images and publications, please visit our [website](#).