

## PI3 kinase p85 alpha antibody [HL1414]

Cat. No. GTX636880

Host	Rabbit
Clonality	Monoclonal
Isotype	IgG
Applications	WB, ICC/IF, IHC-P
Reactivity	Human, Mouse

Package  
100 µl, 25 µl

## Applications

## Application Note

\*Optimal dilutions/concentrations should be determined by the researcher.

Suggested dilution	Recommended dilution
WB	1:500-1:3000
ICC/IF	Assay dependent
IHC-P	Assay dependent

Not tested in other applications.

Observed MW (kDa) 85 kDa.

## Properties

Form	Liquid
Buffer	PBS
Preservative	No preservatives
Storage	Store as concentrated solution. Centrifuge briefly prior to opening vial. For short-term storage (1-2 weeks), store at 4°C. For long-term storage, aliquot and store at -20°C or below. Avoid multiple freeze-thaw cycles.
Concentration	1 mg/ml (Please refer to the vial label for the specific concentration.)
Immunogen	Recombinant protein encompassing a sequence within the center region of human PI3 kinase p85 alpha. The exact sequence is proprietary.
Purification	Affinity purified by Protein A.
Conjugation	Unconjugated

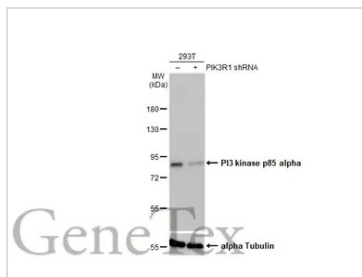
## Note

For laboratory research use only. Not for any clinical, therapeutic, or diagnostic use in humans or animals. Not for animal or human consumption.

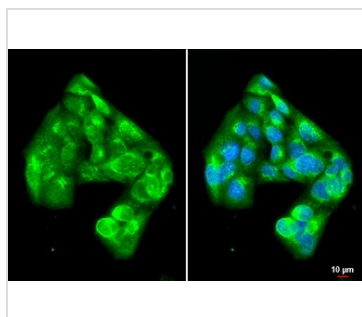
Purchasers shall not, and agree not to enable third parties to, analyze, copy, reverse engineer or otherwise attempt to determine the structure or sequence of the product.



For full product information, images and publications, please visit our [website](#).

**DATA IMAGES**

**GTX636880 WB Image**

Non-transfected (–) and transfected (+) 293T whole cell extracts (50 µg) were separated by 7.5% SDS-PAGE, and the membrane was blotted with PI3 kinase p85 alpha antibody [HL1414] (GTX636880) diluted at 1:3000. The HRP-conjugated anti-rabbit IgG antibody (GTX213110-01) was used to detect the primary antibody.


**GTX636880 ICC/IF Image**

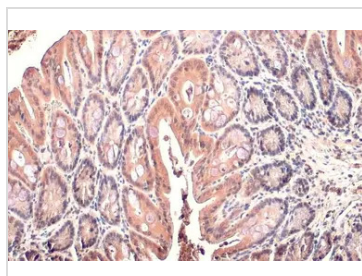
PI3 kinase p85 alpha antibody [HL1414] detects PI3 kinase p85 alpha protein at Golgi apparatus and cytoplasm by immunofluorescent analysis.

Sample: HepG2 cells were fixed in 4% paraformaldehyde at RT for 15 min.

Green: PI3 kinase p85 alpha stained by PI3 kinase p85 alpha antibody [HL1414] (GTX636880) diluted at 1:500.

Blue: Fluoroshield with DAPI (GTX30920).

Scale bar= 10µm.

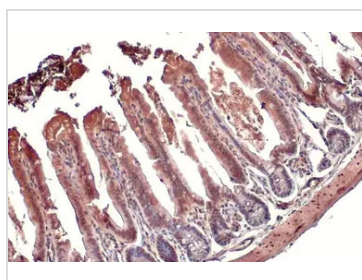

**GTX636880 IHC-P Image**

PI3 kinase p85 alpha antibody [HL1414] detects PI3 kinase p85 alpha protein at cytoplasm by immunohistochemical analysis.

Sample: Paraffin-embedded mouse colon.

PI3 kinase p85 alpha stained by PI3 kinase p85 alpha antibody [HL1414] (GTX636880) diluted at 1:100.

Antigen Retrieval: Citrate buffer, pH 6.0, 15 min

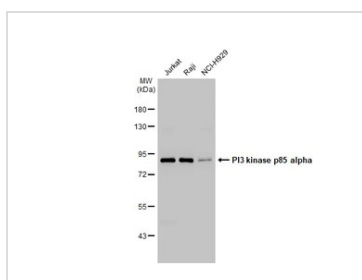

**GTX636880 IHC-P Image**

PI3 kinase p85 alpha antibody [HL1414] detects PI3 kinase p85 alpha protein at cytoplasm by immunohistochemical analysis.

Sample: Paraffin-embedded mouse intestine.

PI3 kinase p85 alpha stained by PI3 kinase p85 alpha antibody [HL1414] (GTX636880) diluted at 1:100.

Antigen Retrieval: Citrate buffer, pH 6.0, 15 min


**GTX636880 WB Image**

Various whole cell extracts (30 µg) were separated by 7.5% SDS-PAGE, and the membrane was blotted with PI3 kinase p85 alpha antibody [HL1414] (GTX636880) diluted at 1:1000. The HRP-conjugated anti-rabbit IgG antibody (GTX213110-01) was used to detect the primary antibody.



For full product information, images and publications, please visit our [website](https://www.genetex.com).