

SARS-CoV-2 (COVID-19) nsp12 antibody [HL1415]

Cat. No. GTX636881

| | |
|---------------------|---------------------------------|
| Host | Rabbit |
| Clonality | Monoclonal |
| Isotype | IgG |
| Applications | WB, ICC/IF, IHC-P (cell pellet) |
| Reactivity | SARS Coronavirus 2 |

Package
100 µl, 25 µl

Applications

Application Note

*Optimal dilutions/concentrations should be determined by the researcher.

| Suggested dilution | Recommended dilution |
|---------------------|----------------------|
| WB | 1:1000-1:10000 |
| ICC/IF | Assay dependent |
| IHC-P (cell pellet) | Assay dependent |

Not tested in other applications.

Properties

| | |
|----------------------|----------------------------------------------------------------------------------------------------------------------------------------------------------------------------------------------------------------------------|
| Form | Liquid |
| Buffer | PBS |
| Preservative | No preservatives |
| Storage | Store as concentrated solution. Centrifuge briefly prior to opening vial. For short-term storage (1-2 weeks), store at 4°C. For long-term storage, aliquot and store at -20°C or below. Avoid multiple freeze-thaw cycles. |
| Concentration | 1 mg/ml (Please refer to the vial label for the specific concentration.) |
| Immunogen | Carrier-protein conjugated synthetic peptide encompassing a sequence within the center region of SARS-CoV-2 (COVID-19) nsp12. (Strain:Wuhan-hu-1) |
| Purification | Affinity purified by Protein A. |
| Conjugation | Unconjugated |

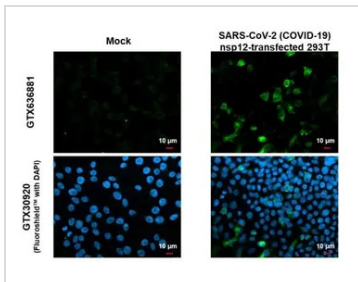
Note

For laboratory research use only. Not for any clinical, therapeutic, or diagnostic use in humans or animals. Not for animal or human consumption.

Purchasers shall not, and agree not to enable third parties to, analyze, copy, reverse engineer or otherwise attempt to determine the structure or sequence of the product.



For full product information, images and publications, please visit our [website](#).

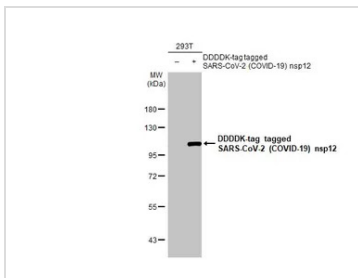
DATA IMAGES

GTx636881 ICC/IF Image

SARS-CoV-2 (COVID-19) nsp12 antibody [HL1415] detects SARS-CoV-2 (COVID-19) nsp12 protein by immunofluorescent analysis.

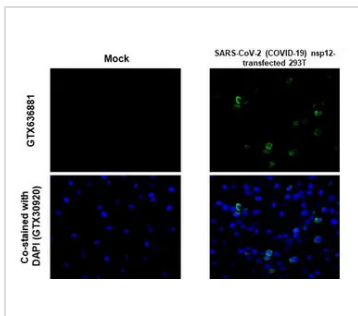
Sample: Mock and transfected 293T cells were fixed in 4% paraformaldehyde at RT for 15 min.

Green: SARS-CoV-2 (COVID-19) nsp12 stained by SARS-CoV-2 (COVID-19) nsp12 antibody [HL1415] (GTx636881) diluted at 1:500.

Blue: Fluoroshield with DAPI (GTx30920).


GTx636881 WB Image

Non-transfected (–) and transfected (+) 293T whole cell extracts (30 μg) were separated by 7.5% SDS-PAGE, and the membrane was blotted with SARS-CoV-2 (COVID-19) nsp12 antibody [HL1415] (GTx636881) diluted at 1:5000. The HRP-conjugated anti-rabbit IgG antibody (GTx213110-01) was used to detect the primary antibody.


GTx636881 IHC-P (cell pellet) Image

SARS-CoV-2 (COVID-19) nsp12 antibody [HL1415] detects SARS-CoV-2 (COVID-19) nsp12 protein by immunohistochemical analysis.

Sample: SARS-CoV-2 (COVID-19) nsp12 transfected 293T cell FFPE Cell Pellet Block.

Green: SARS-CoV-2 (COVID-19) nsp12 stained by SARS-CoV-2 (COVID-19) nsp12 antibody [HL1415] (GTx636881) diluted at 1:100.

Blue: Fluoroshield with DAPI (GTx30920).

Antigen Retrieval: Citrate buffer, pH 6.0, 15 min



For full product information, images and publications, please visit our [website](https://www.genetex.com).