

FCER1G antibody [HL1418]

Cat. No. GTX636884

Host	Rabbit
Clonality	Monoclonal
Isotype	IgG
Applications	WB, ICC/IF, IHC-P, IP
Reactivity	Human, Mouse, Rat, Cat, Dog

★★★★★ Review (2)

Package
100 µl, 25 µl

Applications

Application Note

*Optimal dilutions/concentrations should be determined by the researcher.

Suggested dilution	Recommended dilution
WB	1:1000-1:10000
ICC/IF	Assay dependent
IHC-P	Assay dependent
IP	Assay dependent

Not tested in other applications.

Observed MW (kDa) 10 kDa.

Product Note This antibody was raised against human FCER1G Intracellular domain. KO/KD validation is based on independent review by YCharOS.

Properties

Form	Liquid
Buffer	PBS
Preservative	No preservatives
Storage	Store as concentrated solution. Centrifuge briefly prior to opening vial. For short-term storage (1-2 weeks), store at 4°C. For long-term storage, aliquot and store at -20°C or below. Avoid multiple freeze-thaw cycles.
Concentration	1 mg/ml (Please refer to the vial label for the specific concentration.)
Immunogen	Synthetic peptide encompassing a sequence within the Intracellular domain of human FCER1G. The exact sequence is proprietary.
Purification	Affinity purified by Protein A.
Conjugation	Unconjugated



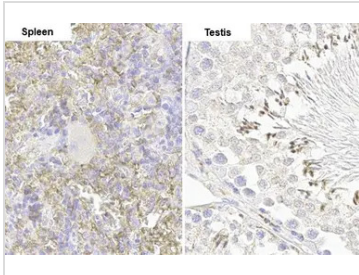
For full product information, images and publications, please visit our [website](#).

For laboratory research use only. Not for any clinical, therapeutic, or diagnostic use in humans or animals. Not for animal or human consumption.

Note

Purchasers shall not, and agree not to enable third parties to, analyze, copy, reverse engineer or otherwise attempt to determine the structure or sequence of the product.

DATA IMAGES



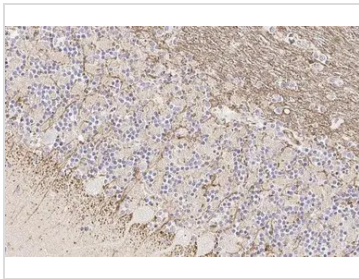
GTX636884 IHC-P Image

FCER1G antibody [HL1418] detects FCER1G protein by immunohistochemical analysis.

Sample: Paraffin-embedded rat tissues.

FCER1G stained by FCER1G antibody [HL1418] (GTX636884) diluted at 1:100.

Antigen Retrieval: Citrate buffer, pH 6.0, 15 min



GTX636884 IHC-P Image

FCER1G antibody [HL1418] detects FCER1G protein at cell membrane by immunohistochemical analysis.

Sample: Paraffin-embedded cat cerebellum.

FCER1G stained by FCER1G antibody [HL1418] (GTX636884) diluted at 1:100.

Antigen Retrieval: Citrate buffer, pH 6.0, 15 min



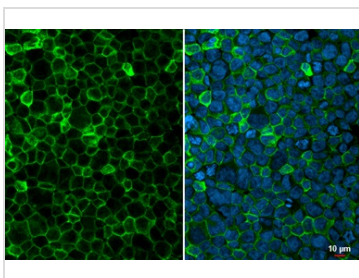
GTX636884 IHC-P Image

FCER1G antibody [HL1418] detects FCER1G protein at cell membrane by immunohistochemical analysis.

Sample: Paraffin-embedded dog cerebellum.

FCER1G stained by FCER1G antibody [HL1418] (GTX636884) diluted at 1:100.

Antigen Retrieval: Citrate buffer, pH 6.0, 15 min



GTX636884 ICC/IF Image

FCER1G antibody [HL1418] detects FCER1G protein at cell membrane by immunofluorescent analysis.

Sample: THP-1 cells were fixed in 4% paraformaldehyde at RT for 15 min.

Green: FCER1G stained by FCER1G antibody [HL1418] (GTX636884) diluted at 1:500.

Blue: Fluoroshield with DAPI (GTX30920).



For full product information, images and publications, please visit our [website](#).