

IL1 beta antibody [HL1423]

Cat. No. GTX636889

Host	Rabbit
Clonality	Monoclonal
Isotype	IgG
Applications	WB, ICC/IF, IHC-P, ELISA, Sandwich ELISA
Reactivity	Human, Mouse

Package
100 µl, 25 µl

Applications

Application Note

*Optimal dilutions/concentrations should be determined by the researcher.

Suggested dilution	Recommended dilution
WB	1:500-1:3000
ICC/IF	1:100-1:1000
IHC-P	1:100-1:1000
ELISA	Assay dependent
Sandwich ELISA	Assay dependent

Note : Capture: GTX636889/GTX636887, Detection: GTX636887/GTX636889

Please notice that detection antibody needs to be conjugated to HRP to function when paired with capture antibody. Please contact us for custom HRP-conjugated antibody.

Not tested in other applications.

Observed MW (kDa)	31 kDa.
Product Note	The use of GTX636889 for mouse is based on IHC-P testing. For WB using mouse samples, we recommend GTX74034.

Properties

Form	Liquid
Buffer	PBS
Preservative	No preservatives
Storage	Store as concentrated solution. Centrifuge briefly prior to opening vial. For short-term storage (1-2 weeks), store at 4°C. For long-term storage, aliquot and store at -20°C or below. Avoid multiple freeze-thaw cycles.
Concentration	1 mg/ml (Please refer to the vial label for the specific concentration.)
Immunogen	Recombinant protein encompassing a sequence within the center region of human IL1 beta. The exact sequence is proprietary.



For full product information, images and publications, please visit our [website](#).

Purification Affinity purified by Protein A.

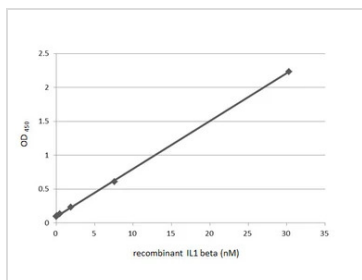
Conjugation Unconjugated

Note

For laboratory research use only. Not for any clinical, therapeutic, or diagnostic use in humans or animals. Not for animal or human consumption.

Purchasers shall not, and agree not to enable third parties to, analyze, copy, reverse engineer or otherwise attempt to determine the structure or sequence of the product.

DATA IMAGES



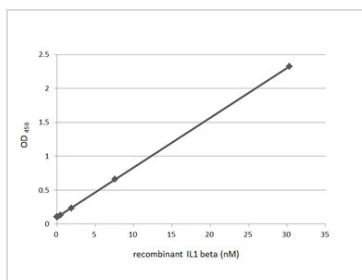
GTX636889 ELISA Image

Sandwich ELISA detection of recombinant IL1 beta using antibodies as below.

Capture: IL1 beta antibody [HL1423] (GTX636889) (5 µg/mL)

Detection: HRP-conjugated IL1 beta antibody [HL1421] (GTX636887) (1 µg/mL)

Please notice that GTX636887 needs to be conjugated to HRP to function as the detection antibody when paired with GTX636889. Please contact us for custom HRP-conjugated antibody.



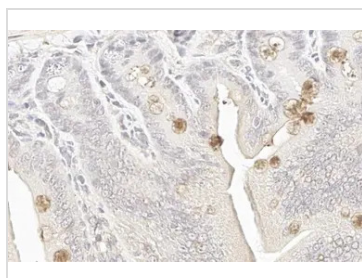
GTX636889 ELISA Image

Sandwich ELISA detection of recombinant IL1 beta using antibodies as below.

Capture: IL1 beta antibody [HL1421] (GTX636887) (5 µg/mL)

Detection: HRP-conjugated IL1 beta antibody [HL1423] (GTX636889) (1 µg/mL)

Please notice that GTX636889 needs to be conjugated to HRP to function as the detection antibody when paired with GTX636887. Please contact us for custom HRP-conjugated antibody.



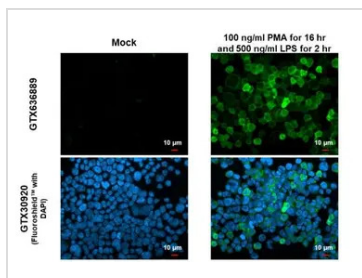
GTX636889 IHC-P Image

IL1 beta antibody [HL1423] detects secreted IL1 beta protein by immunohistochemical analysis.

Sample: Paraffin-embedded mouse intestine.

IL1 beta stained by IL1 beta antibody [HL1423] (GTX636889) diluted at 1:100.

Antigen Retrieval: Citrate buffer, pH 6.0, 15 min



GTX636889 ICC/IF Image

IL1 beta antibody [HL1423] detects IL1 beta protein at cytoplasm by immunofluorescent analysis.

Sample: Mock and treated THP-1 cells were fixed in 4% paraformaldehyde at RT for 15 min.

Green: IL1 beta stained by IL1 beta antibody [HL1423] (GTX636889) diluted at 1:1000.

Blue: Fluoroshield with DAPI (GTX30920).



For full product information, images and publications, please visit our [website](https://www.genetex.com).