

SARS-CoV-2 (COVID-19) Spike (N501Y Mutant) antibody [HL1425]

Cat. No. GTX636891

Host	Rabbit
Clonality	Monoclonal
Isotype	IgG
Applications	WB
Reactivity	SARS Coronavirus 2

Package
 100 µl, 25 µl

Applications

Application Note

*Optimal dilutions/concentrations should be determined by the researcher.

Suggested dilution	Recommended dilution
WB	1:1000-1:10000

Not tested in other applications.

Properties

Form	Liquid
Buffer	PBS
Preservative	No preservatives
Storage	Store as concentrated solution. Centrifuge briefly prior to opening vial. For short-term storage (1-2 weeks), store at 4°C. For long-term storage, aliquot and store at -20°C or below. Avoid multiple freeze-thaw cycles.
Concentration	1 mg/ml (Please refer to the vial label for the specific concentration.)
Immunogen	Carrier-protein conjugated synthetic peptide surrounding mutant N501Y of SARS-CoV-2 (COVID-19) Spike. The exact sequence is proprietary.
Purification	Affinity purified by Protein A.
Conjugation	Unconjugated

Note

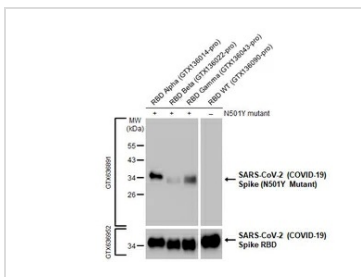
For laboratory research use only. Not for any clinical, therapeutic, or diagnostic use in humans or animals. Not for animal or human consumption.

Purchasers shall not, and agree not to enable third parties to, analyze, copy, reverse engineer or otherwise attempt to determine the structure or sequence of the product.



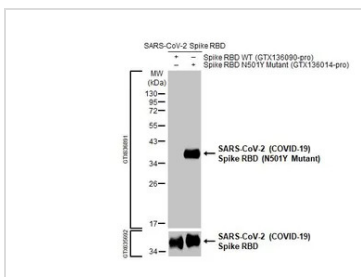
For full product information, images and publications, please visit our [website](#).

DATA IMAGES



GTX636891 WB Image

Various SARS-CoV-2 (COVID-19) Spike RBD Proteins (0.1 µg) were separated by 12% SDS-PAGE, and the membrane was blotted with SARS-CoV-2 (COVID-19) Spike (N501Y Mutant) antibody [HL1425] (GTX636891) diluted at 1:5000. The HRP-conjugated anti-rabbit IgG antibody (GTX213110-01) was used to detect the primary antibody.



GTX636891 WB Image

SARS-CoV-2 Spike RBD, His tag (SARS-CoV-2 (COVID-19) / SARS-CoV-2 Spike RBD (N501Y), His tag (GTX136090-pro | GTX136014-pro) (0.1 µg) were separated by 12% SDS-PAGE, and the membrane was blotted with SARS-CoV-2 (COVID-19) Spike (N501Y Mutant) antibody [HL1425] (GTX636891) diluted at 1:5000. The HRP-conjugated anti-rabbit IgG antibody (GTX213110-01) was used to detect the primary antibody.



For full product information, images and publications, please visit our [website](#).