

## Gasdermin D antibody [HL1430]

**Cat. No. GTX636896**

|                     |            |
|---------------------|------------|
| <b>Host</b>         | Rabbit     |
| <b>Clonality</b>    | Monoclonal |
| <b>Isotype</b>      | IgG        |
| <b>Applications</b> | WB, IHC-P  |
| <b>Reactivity</b>   | Human      |

**Package**  
100 µl, 25 µl

## Applications

**Application Note**

\*Optimal dilutions/concentrations should be determined by the researcher.

| Suggested dilution | Recommended dilution |
|--------------------|----------------------|
| WB                 | 1:500-1:3000         |
| IHC-P              | 1:100-1:1000         |

Not tested in other applications.

**Observed MW (kDa)** 30 (cleaved form), 53 (Pro-form) kDa.

## Properties

**Form** Liquid

**Buffer** PBS

**Preservative** No preservatives

**Storage** Store as concentrated solution. Centrifuge briefly prior to opening vial. For short-term storage (1-2 weeks), store at 4°C. For long-term storage, aliquot and store at -20°C or below. Avoid multiple freeze-thaw cycles.

**Concentration** 1 mg/ml (Please refer to the vial label for the specific concentration.)

**Immunogen** Recombinant protein encompassing a sequence within the center region of Human Gasdermin D. The exact sequence is proprietary.

**Purification** Affinity purified by Protein A.

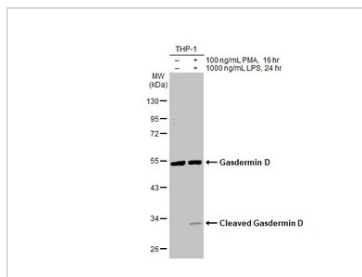
**Conjugation** Unconjugated

**Note** For laboratory research use only. Not for any clinical, therapeutic, or diagnostic use in humans or animals. Not for animal or human consumption.

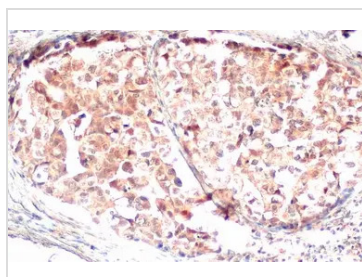
Purchasers shall not, and agree not to enable third parties to, analyze, copy, reverse engineer or otherwise attempt to determine the structure or sequence of the product.



For full product information, images and publications, please visit our [website](#).

**DATA IMAGES**

**GTX636896 WB Image**

Untreated (-) and treated (+) THP-1 whole cell extracts (30 µg) were separated by 10% SDS-PAGE, and the membrane was blotted with Gasdermin D antibody [HL1430] (GTX636896) diluted at 1:1000. The HRP-conjugated anti-rabbit IgG antibody (GTX213110-01) was used to detect the primary antibody.


**GTX636896 IHC-P Image**

Gasdermin D antibody [HL1430] detects Gasdermin D protein at cell membrane and secreted by immunohistochemical analysis.

Sample: Paraffin-embedded human breast carcinoma.

Gasdermin D stained by Gasdermin D antibody [HL1430] (GTX636896) diluted at 1:100.

Antigen Retrieval: Citrate buffer, pH 6.0, 15 min



For full product information, images and publications, please visit our [website](#).