

## Chikungunya virus nsP2 antibody [HL1431]

**Cat. No. GTX636897**

<b>Host</b>	Rabbit
<b>Clonality</b>	Monoclonal
<b>Isotype</b>	IgG
<b>Applications</b>	WB, ICC/IF
<b>Reactivity</b>	Chikungunya Virus

References ( 1 )

Package

100 µl, 25 µl

## Applications

**Application Note**

\*Optimal dilutions/concentrations should be determined by the researcher.

Suggested dilution	Recommended dilution
WB	1:5000-1:20000
ICC/IF	Assay dependent

Not tested in other applications.

## Properties

<b>Form</b>	Liquid
<b>Buffer</b>	PBS
<b>Preservative</b>	No preservatives
<b>Storage</b>	Store as concentrated solution. Centrifuge briefly prior to opening vial. For short-term storage (1-2 weeks), store at 4°C. For long-term storage, aliquot and store at -20°C or below. Avoid multiple freeze-thaw cycles.
<b>Concentration</b>	1 mg/ml (Please refer to the vial label for the specific concentration.)
<b>Immunogen</b>	Recombinant protein encompassing a sequence within the center region of Chikungunya virus nsP2. (strain S27-African prototype)
<b>Purification</b>	Affinity purified by Protein A.
<b>Conjugation</b>	Unconjugated

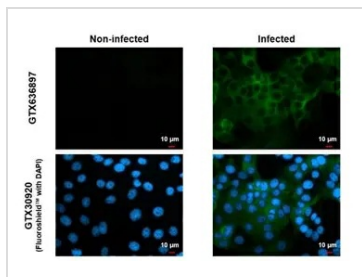
**Note**

For laboratory research use only. Not for any clinical, therapeutic, or diagnostic use in humans or animals. Not for animal or human consumption.

Purchasers shall not, and agree not to enable third parties to, analyze, copy, reverse engineer or otherwise attempt to determine the structure or sequence of the product.

For full product information, images and publications, please visit our [website](#).

DATA IMAGES



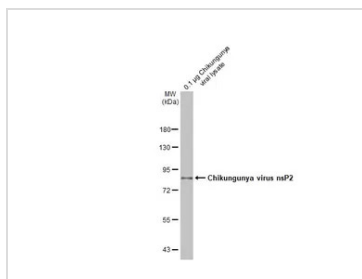
**GTX636897 ICC/IF Image**

Immunofluorescent analysis of mock and Chikungunya virus-infected cells using Chikungunya virus nsP2 antibody (GTX636897).

Sample: mock and Chikungunya virus non-infected and infected cells slide.

Green: Chikungunya virus nsP2 antibody (GTX636897) diluted at 1:100.

Blue: Fluoroshield with DAPI (GTX30920).



**GTX636897 WB Image**

Chikungunya viral lysate (0.1 µg) was separated by 7.5% SDS-PAGE, and the membrane was blotted with Chikungunya virus nsP2 antibody [HL1431] (GTX636897) diluted at 1:20000. The HRP-conjugated anti-rabbit IgG antibody (GTX213110-01) was used to detect the primary antibody, and the signal was developed with Trident ECL plus-Enhanced.



For full product information, images and publications, please visit our [website](#).