

PP2A alpha antibody [HL1447]

Cat. No. GTX636919

Host	Rabbit
Clonality	Monoclonal
Isotype	IgG
Applications	WB, ICC/IF, IHC-P
Reactivity	Human, Mouse, Rat, Drosophila, Cat, Dog

Package
100 µl, 25 µl

Applications

Application Note

*Optimal dilutions/concentrations should be determined by the researcher.

Suggested dilution	Recommended dilution
WB	1:500-1:3000
ICC/IF	Assay dependent
IHC-P	Assay dependent

Not tested in other applications.

Observed MW (kDa) 36 kDa.

Properties

Form	Liquid
Buffer	PBS
Preservative	No preservatives
Storage	Store as concentrated solution. Centrifuge briefly prior to opening vial. For short-term storage (1-2 weeks), store at 4°C. For long-term storage, aliquot and store at -20°C or below. Avoid multiple freeze-thaw cycles.
Concentration	1 mg/ml (Please refer to the vial label for the specific concentration.)
Immunogen	Carrier-protein conjugated synthetic peptide encompassing a sequence within the C-terminus region of human PP2A alpha. The exact sequence is proprietary.
Purification	Affinity purified by Protein A.
Conjugation	Unconjugated

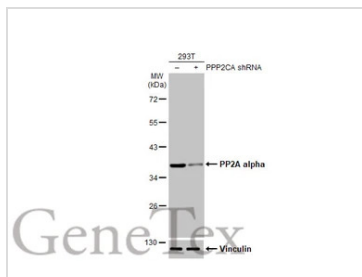
Note

For laboratory research use only. Not for any clinical, therapeutic, or diagnostic use in humans or animals. Not for animal or human consumption.

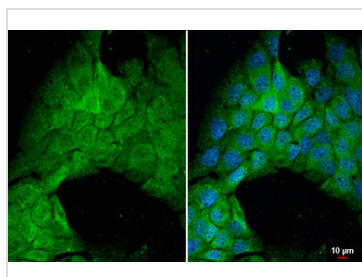
Purchasers shall not, and agree not to enable third parties to, analyze, copy, reverse engineer or otherwise attempt to determine the structure or sequence of the product.



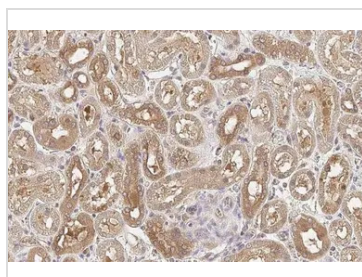
For full product information, images and publications, please visit our [website](#).

DATA IMAGES

GTX636919 WB Image

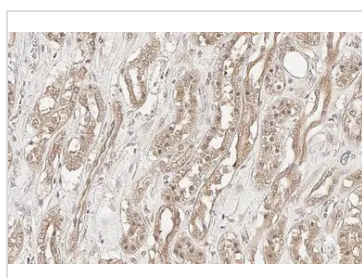
Non-transfected (–) and transfected (+) PP2A alpha shRNA-transfected 293T (30 µg) were separated by 10% SDS-PAGE, and the membrane was blotted with PP2A alpha antibody [HL1447] (GTX636919) diluted at 1:20000. The HRP-conjugated anti-rabbit IgG antibody (GTX213110-01) was used to detect the primary antibody.


GTX636919 ICC/IF Image

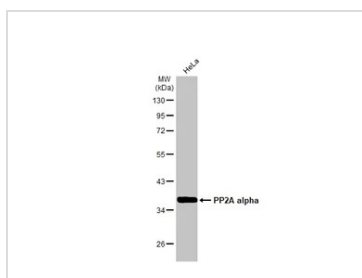
PP2A alpha antibody [HL1447] detects PP2A alpha protein by immunofluorescent analysis.
Sample: A431 cells were fixed in 4% paraformaldehyde at RT for 15 min.
Green: PP2A alpha stained by PP2A alpha antibody [HL1447] (GTX636919) diluted at 1:500.
Blue: Fluoroshield with DAPI (GTX30920).


GTX636919 IHC-P Image

PP2A alpha antibody [HL1447] detects PP2A alpha protein at cytoplasm and nucleus by immunohistochemical analysis.
Sample: Paraffin-embedded dog kidney.
PP2A alpha stained by PP2A alpha antibody [HL1447] (GTX636919) diluted at 1:100.
Antigen Retrieval: Citrate buffer, pH 6.0, 15 min


GTX636919 IHC-P Image

PP2A alpha antibody [HL1447] detects PP2A alpha protein at cytoplasm and nucleus by immunohistochemical analysis.
Sample: Paraffin-embedded cat kidney.
PP2A alpha stained by PP2A alpha antibody [HL1447] (GTX636919) diluted at 1:100.
Antigen Retrieval: Citrate buffer, pH 6.0, 15 min


GTX636919 WB Image

Whole cell extract (30 µg) was separated by 10% SDS-PAGE, and the membrane was blotted with PP2A alpha antibody [HL1447] (GTX636919) diluted at 1:2000. The HRP-conjugated anti-rabbit IgG antibody (GTX213110-01) was used to detect the primary antibody.



For full product information, images and publications, please visit our [website](https://www.genetex.com).