

# SARS-CoV-2 (COVID-19) ORF7b antibody [HL1453]

**Cat. No. GTX636925**

<b>Host</b>	Rabbit
<b>Clonality</b>	Monoclonal
<b>Isotype</b>	IgG
<b>Applications</b>	WB, ICC/IF, IHC-P (cell pellet)
<b>Reactivity</b>	SARS Coronavirus 2

## Package

100 µl, 25 µl

## Applications

### Application Note

\*Optimal dilutions/concentrations should be determined by the researcher.

Suggested dilution	Recommended dilution
WB	1:500-1:3000
ICC/IF	Assay dependent
IHC-P (cell pellet)	Assay dependent

Not tested in other applications.

## Properties

<b>Form</b>	Liquid
<b>Buffer</b>	PBS
<b>Preservative</b>	No preservatives
<b>Storage</b>	Store as concentrated solution. Centrifuge briefly prior to opening vial. For short-term storage (1-2 weeks), store at 4°C. For long-term storage, aliquot and store at -20°C or below. Avoid multiple freeze-thaw cycles.
<b>Concentration</b>	1 mg/ml (Please refer to the vial label for the specific concentration.)
<b>Immunogen</b>	Carrier-protein conjugated synthetic peptide encompassing a sequence within the center region of SARS-CoV-2 (COVID-19) ORF7b. (Strain:Wuhan-hu-1)
<b>Purification</b>	Affinity purified by Protein A.
<b>Conjugation</b>	Unconjugated

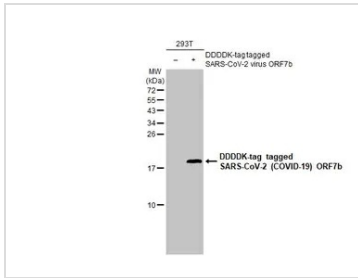
### Note

For laboratory research use only. Not for any clinical, therapeutic, or diagnostic use in humans or animals. Not for animal or human consumption.

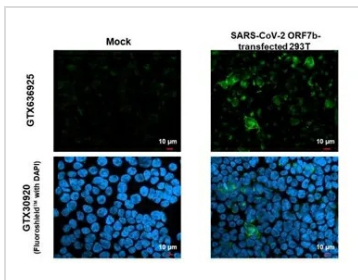
Purchasers shall not, and agree not to enable third parties to, analyze, copy, reverse engineer or otherwise attempt to determine the structure or sequence of the product.



For full product information, images and publications, please visit our [website](#).

**DATA IMAGES**

**GTX636925 WB Image**

Non-transfected (–) and transfected (+) 293T whole cell extracts (30 µg) were separated by 15% SDS-PAGE, and the membrane was blotted with SARS-CoV-2 (COVID-19) ORF7b antibody [HL1453] (GTX636925) diluted at 1:2000. The HRP-conjugated anti-rabbit IgG antibody (GTX213110-01) was used to detect the primary antibody.

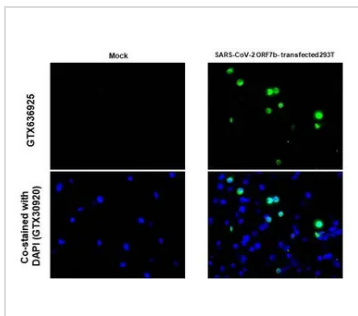

**GTX636925 ICC/IF Image**

SARS-CoV-2 (COVID-19) ORF7b antibody [HL1453] detects SARS-CoV-2 (COVID-19) ORF7b protein by immunofluorescent analysis.

Sample: Mock and transfected 293T cells were fixed in 4% paraformaldehyde at RT for 15 min.

Green: SARS-CoV-2 (COVID-19) ORF7b stained by SARS-CoV-2 (COVID-19) ORF7b antibody [HL1453] (GTX636925) diluted at 1:500.

Blue: Fluoroshield with DAPI (GTX30920).


**GTX636925 IHC-P (cell pellet) Image**

SARS-CoV-2 (COVID-19) ORF7b antibody [HL1453] detects SARS-CoV-2 (COVID-19) ORF7b protein at cytoplasm by immunohistochemical analysis.

Sample: Paraffin-embedded mock and SARS-CoV-2 ORF7b transfected 293T cell pellet.

Green: SARS-CoV-2 (COVID-19) ORF7b stained by SARS-CoV-2 (COVID-19) ORF7b antibody [HL1453] (GTX636925) diluted at 1:1000.

Blue: Fluoroshield with DAPI (GTX30920).

Antigen Retrieval: Citrate buffer, pH 6.0, 15 min



For full product information, images and publications, please visit our [website](https://www.genetex.com).