

Her2 / ErbB2 (phospho Tyr1248) antibody [HL1466]

Cat. No. GTX636940

Host	Rabbit
Clonality	Monoclonal
Isotype	IgG
Applications	WB, ICC/IF, IHC-P
Reactivity	Human, Rat

Package
100 µl, 25 µl

Applications

Application Note

*Optimal dilutions/concentrations should be determined by the researcher.

Suggested dilution	Recommended dilution
WB	1:500-1:3000
ICC/IF	Assay dependent
IHC-P	1:100-1:1000

Not tested in other applications.

Observed MW (kDa) 185 kDa.

Properties

Form	Liquid
Buffer	PBS
Preservative	No preservative
Storage	Store as concentrated solution. Centrifuge briefly prior to opening vial. For short-term storage (1-2 weeks), store at 4°C. For long-term storage, aliquot and store at -20°C or below. Avoid multiple freeze-thaw cycles.
Concentration	1 mg/ml (Please refer to the vial label for the specific concentration.)
Immunogen	Carrier-protein conjugated synthetic peptide surrounding phospho Tyr1248 of human Her2 / ErbB2. The exact sequence is proprietary.
Purification	Affinity purified by Protein A.
Conjugation	Unconjugated

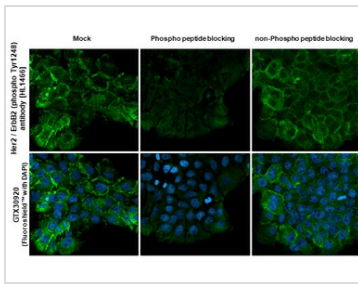
Note

For laboratory research use only. Not for any clinical, therapeutic, or diagnostic use in humans or animals. Not for animal or human consumption.

Purchasers shall not, and agree not to enable third parties to, analyze, copy, reverse engineer or otherwise attempt to determine the structure or sequence of the product.



For full product information, images and publications, please visit our [website](#).

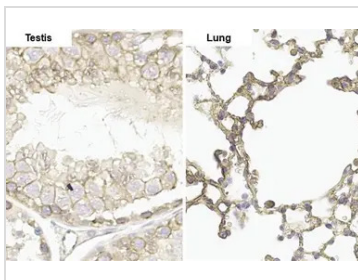
DATA IMAGES

GTX636940 ICC/IF Image

Her2 / ErbB2 (phospho Tyr1248) antibody [HL1466] detects Her2 / ErbB2 (phospho Tyr1248) protein at cell membrane by immunofluorescent analysis.

Sample: Mock and treated A431 cells were fixed in 4% paraformaldehyde at RT for 15 min.

Green: Her2 / ErbB2 (phospho Tyr1248) stained by Her2 / ErbB2 (phospho Tyr1248) antibody [HL1466] (GTX636940) diluted at 1:500.

Blue: Fluoroshield with DAPI (GTX30920).

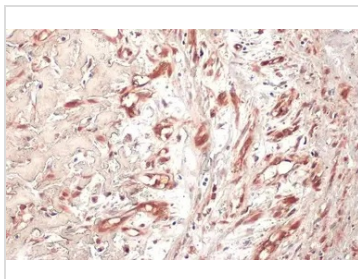

GTX636940 IHC-P Image

Her2 / ErbB2 (phospho Tyr1248) antibody [HL1466] detects Her2 / ErbB2 (phospho Tyr1248) protein by immunohistochemical analysis.

Sample: Paraffin-embedded rat tissues.

Her2 / ErbB2 (phospho Tyr1248) stained by Her2 / ErbB2 (phospho Tyr1248) antibody [HL1466] (GTX636940) diluted at 1:100.

Antigen Retrieval: Citrate buffer, pH 6.0, 15 min

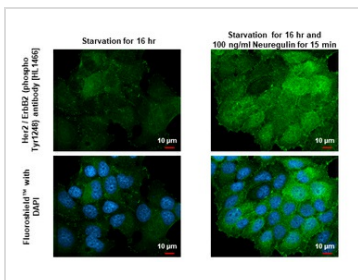

GTX636940 IHC-P Image

Her2 / ErbB2 (phospho Tyr1248) antibody [HL1466] detects Her2 / ErbB2 (phospho Tyr1248) protein by immunohistochemical analysis.

Sample: Paraffin-embedded human breast carcinoma.

Her2 / ErbB2 (phospho Tyr1248) stained by Her2 / ErbB2 (phospho Tyr1248) antibody [HL1466] (GTX636940) diluted at 1:100.

Antigen Retrieval: Citrate buffer, pH 6.0, 15 min

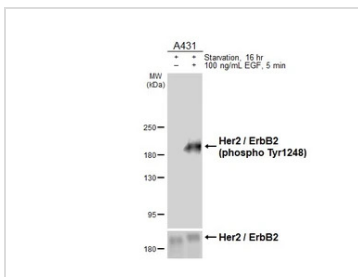

GTX636940 ICC/IF Image

Her2 / ErbB2 (phospho Tyr1248) antibody [HL1466] detects Her2 / ErbB2 (phospho Tyr1248) protein by immunofluorescent analysis.

Sample: Mock and treated MCF-7 cells were fixed in 4% paraformaldehyde at RT for 15 min.

Green: Her2 / ErbB2 (phospho Tyr1248) stained by Her2 / ErbB2 (phospho Tyr1248) antibody [HL1466] (GTX636940) diluted at 1:500.

Blue: Fluoroshield with DAPI (GTX30920).


GTX636940 WB Image

Untreated (-) and treated (+) A431 whole cell extracts (30 µg) were separated by 5% SDS-PAGE, and the membrane was blotted with Her2 / ErbB2 (phospho Tyr1248) antibody [HL1466] (GTX636940) diluted at 1:1000. The HRP-conjugated anti-rabbit IgG antibody (GTX213110-01) was used to detect the primary antibody.



For full product information, images and publications, please visit our [website](https://www.genetex.com).