

## mCherry antibody [HL1482]

**Cat. No. GTX636956**

<b>Host</b>	Rabbit
<b>Clonality</b>	Monoclonal
<b>Isotype</b>	IgG
<b>Applications</b>	WB, ICC/IF
<b>Reactivity</b>	Species independent

References ( 4 )

Package

100 µl, 25 µl

## Applications

**Application Note**

\*Optimal dilutions/concentrations should be determined by the researcher.

Suggested dilution	Recommended dilution
WB	1:1000-1:10000
ICC/IF	Assay dependent

Not tested in other applications.

**Product Note** This antibody is specific for mCherry protein, and it does not cross-react with RFP and GFP.

## Properties

<b>Form</b>	Liquid
<b>Buffer</b>	PBS
<b>Preservative</b>	No preservatives
<b>Storage</b>	Store as concentrated solution. Centrifuge briefly prior to opening vial. For short-term storage (1-2 weeks), store at 4°C. For long-term storage, aliquot and store at -20°C or below. Avoid multiple freeze-thaw cycles.
<b>Concentration</b>	2 mg/ml (Please refer to the vial label for the specific concentration.)
<b>Immunogen</b>	Full length mCherry recombinant protein
<b>Purification</b>	Affinity purified by Protein A.
<b>Conjugation</b>	Unconjugated

**Note**

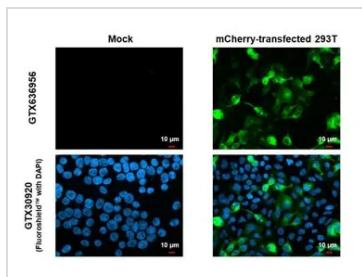
For laboratory research use only. Not for any clinical, therapeutic, or diagnostic use in humans or animals. Not for animal or human consumption.

Purchasers shall not, and agree not to enable third parties to, analyze, copy, reverse engineer or otherwise attempt to determine the structure or sequence of the product.



For full product information, images and publications, please visit our [website](#).

## DATA IMAGES



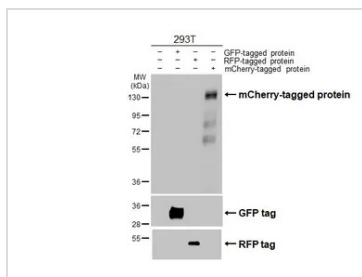
## GTx636956 ICC/IF Image

mCherry antibody [HL1482] detects mCherry protein by immunofluorescent analysis.

Sample: Mock and transfected 293T cells were fixed in 4% paraformaldehyde at RT for 15 min.

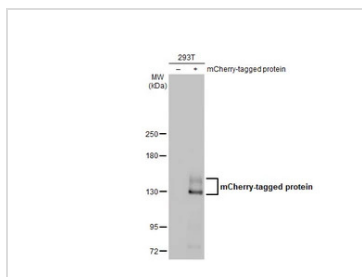
Green: mCherry stained by mCherry antibody [HL1482] (GTx636956) diluted at 1:500.

Blue: Fluoroshield with DAPI (GTx30920).



## GTx636956 WB Image

Non-transfected (-) and transfected (+) 293T whole cell extracts (30 μg) were separated by gradient gel SDS-PAGE, and the membrane was blotted with mCherry antibody [HL1482] (GTx636956) diluted at 1:10000. The HRP-conjugated anti-rabbit IgG antibody (GTx213110-01) was used to detect the primary antibody.



## GTx636956 WB Image

Non-transfected (-) and transfected (+) 293T whole cell extract (30 μg) were separated by 5% SDS-PAGE, and the membrane was blotted with mCherry antibody [HL1482] (GTx636956) diluted at 1:5000. The HRP-conjugated anti-rabbit IgG antibody (GTx213110-01) was used to detect the primary antibody.



For full product information, images and publications, please visit our [website](https://www.genetex.com).