

RAB5A antibody [HL1497]

Cat. No. GTX636971

Host	Rabbit
Clonality	Monoclonal
Isotype	IgG
Applications	WB, ICC/IF, IHC-P, IP
Reactivity	Human, Mouse, Rat, Cat, Dog

References (1)

★★★★★ Review (3)

Package

100 µl, 25 µl

Applications

Application Note

*Optimal dilutions/concentrations should be determined by the researcher.

Suggested dilution	Recommended dilution
WB	1:500-1:3000
ICC/IF	Assay dependent
IHC-P	Assay dependent
IP	Assay dependent

Not tested in other applications.

Observed MW (kDa) 24 kDa.**Product Note** This antibody may not be suitable for human IHC-P assay, as its human reactivity is based on WB testing. KO/KD validation is based on independent review by YCharOS.

Properties

Form	Liquid
Buffer	PBS
Preservative	No preservatives
Storage	Store as concentrated solution. Centrifuge briefly prior to opening vial. For short-term storage (1-2 weeks), store at 4°C. For long-term storage, aliquot and store at -20°C or below. Avoid multiple freeze-thaw cycles.
Concentration	1 mg/ml (Please refer to the vial label for the specific concentration.)
Immunogen	Carrier-protein conjugated synthetic peptide encompassing a sequence within the center region of human RAB5A. The exact sequence is proprietary.
Purification	Affinity purified by Protein A.
Conjugation	Unconjugated

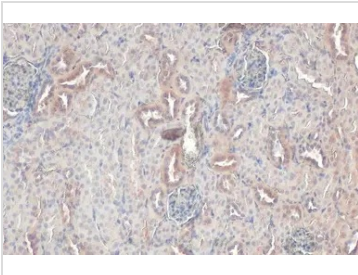


For full product information, images and publications, please visit our [website](#).

For laboratory research use only. Not for any clinical, therapeutic, or diagnostic use in humans or animals. Not for animal or human consumption.

Note
 Purchasers shall not, and agree not to enable third parties to, analyze, copy, reverse engineer or otherwise attempt to determine the structure or sequence of the product.

DATA IMAGES



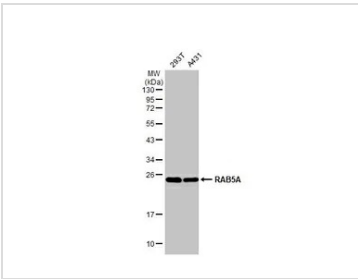
GTX636971 IHC-P Image

RAB5A antibody [HL1497] detects RAB5A protein at cell membrane and cytoplasm by immunohistochemical analysis.

Sample: Paraffin-embedded mouse kidney.

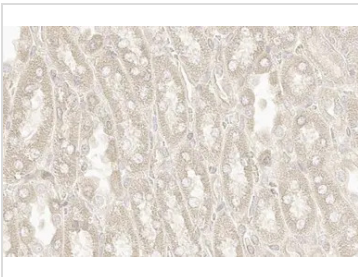
RAB5A stained by RAB5A antibody [HL1497] (GTX636971) diluted at 1:100.

Antigen Retrieval: Citrate buffer, pH 6.0, 15 min



GTX636971 WB Image

Various whole cell extracts (30 µg) were separated by 12% SDS-PAGE, and the membrane was blotted with RAB5A antibody [HL1497] (GTX636971) diluted at 1:1000. The HRP-conjugated anti-rabbit IgG antibody (GTX213110-01) was used to detect the primary antibody.



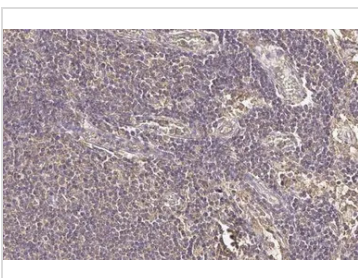
GTX636971 IHC-P Image

RAB5A antibody [HL1497] detects RAB5A protein by immunohistochemical analysis.

Sample: Paraffin-embedded rat kidney.

RAB5A stained by RAB5A antibody [HL1497] (GTX636971) diluted at 1:100.

Antigen Retrieval: Citrate buffer, pH 6.0, 15 min



GTX636971 IHC-P Image

RAB5A antibody [HL1497] detects RAB5A protein at cytoplasm by immunohistochemical analysis.

Sample: Paraffin-embedded cat lymph node.

RAB5A stained by RAB5A antibody [HL1497] (GTX636971) diluted at 1:100.

Antigen Retrieval: Citrate buffer, pH 6.0, 15 min



For full product information, images and publications, please visit our [website](#).