

DNA polymerase beta antibody [HL1512]

Cat. No. GTX636986

Host	Rabbit
Clonality	Monoclonal
Isotype	IgG
Applications	WB, ICC/IF, IHC-P
Reactivity	Human, Mouse, Rat, Zebrafish, Japanese Medaka

Package
100 µl, 25 µl

Applications

Application Note

*Optimal dilutions/concentrations should be determined by the researcher.

Suggested dilution	Recommended dilution
WB	1:500-1:3000
ICC/IF	Assay dependent
IHC-P	Assay dependent

Not tested in other applications.

Observed MW (kDa) 38 kDa.

Properties

Form	Liquid
Buffer	PBS
Preservative	No preservatives
Storage	Store as concentrated solution. Centrifuge briefly prior to opening vial. For short-term storage (1-2 weeks), store at 4°C. For long-term storage, aliquot and store at -20°C or below. Avoid multiple freeze-thaw cycles.
Concentration	1 mg/ml (Please refer to the vial label for the specific concentration.)
Immunogen	Recombinant protein encompassing a sequence within the center region of human DNA polymerase beta. The exact sequence is proprietary.
Purification	Affinity purified by Protein A.
Conjugation	Unconjugated

Note For laboratory research use only. Not for any clinical, therapeutic, or diagnostic use in humans or animals. Not for animal or human consumption.

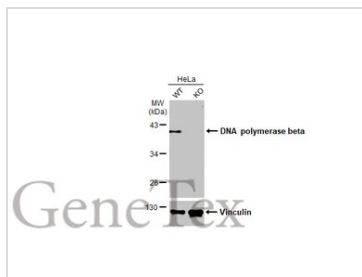
Purchasers shall not, and agree not to enable third parties to, analyze, copy, reverse engineer or otherwise attempt to determine the structure or sequence of the product.



For full product information, images and publications, please visit our [website](#).

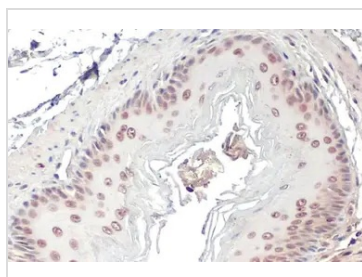
Date 2026 / 05 / 05 Page 1 of 2

DATA IMAGES



GTX636986 WB Image

Wild-type (WT) and POLB knockout (KO) HeLa cell extracts (30 µg) were separated by 10% SDS-PAGE, and the membrane was blotted with DNA polymerase beta antibody [HL1512] (GTX636986) diluted at 1:1000. The HRP-conjugated anti-rabbit IgG antibody (GTX213110-01) was used to detect the primary antibody, and the signal was developed with Trident ECL plus-Enhanced.



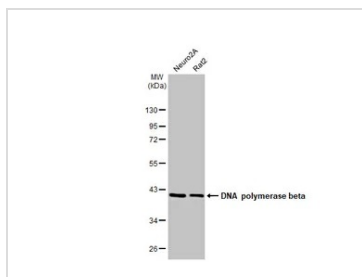
GTX636986 IHC-P Image

DNA polymerase beta antibody [HL1512] detects DNA polymerase beta protein at cytoplasm and nucleus by immunohistochemical analysis.

Sample: Paraffin-embedded mouse esophagus.

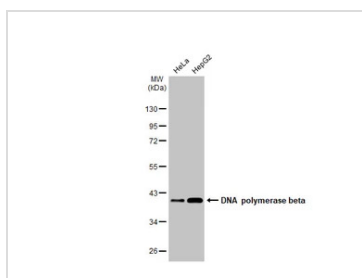
DNA polymerase beta stained by DNA polymerase beta antibody [HL1512] (GTX636986) diluted at 1:100.

Antigen Retrieval: Citrate buffer, pH 6.0, 15 min



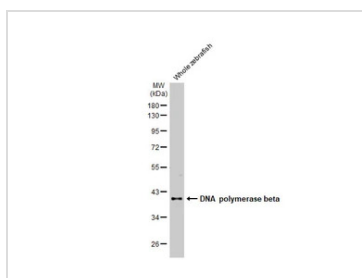
GTX636986 WB Image

Various whole cell extracts (30 µg) were separated by 10% SDS-PAGE, and the membrane was blotted with DNA polymerase beta antibody [HL1512] (GTX636986) diluted at 1:1000. The HRP-conjugated anti-rabbit IgG antibody (GTX213110-01) was used to detect the primary antibody.



GTX636986 WB Image

Various whole cell extracts (30 µg) were separated by 10% SDS-PAGE, and the membrane was blotted with DNA polymerase beta antibody [HL1512] (GTX636986) diluted at 1:1000. The HRP-conjugated anti-rabbit IgG antibody (GTX213110-01) was used to detect the primary antibody.



GTX636986 WB Image

Whole zebrafish extract (30 µg) was separated by 10% SDS-PAGE, and the membrane was blotted with DNA polymerase beta antibody [HL1512] (GTX636986) diluted at 1:1000. The HRP-conjugated anti-rabbit IgG antibody (GTX213110-01) was used to detect the primary antibody.



For full product information, images and publications, please visit our [website](#).