

# FABP4 antibody [HL1521]

**Cat. No. GTX636995**

<b>Host</b>	Rabbit
<b>Clonality</b>	Monoclonal
<b>Isotype</b>	IgG
<b>Applications</b>	WB, ICC/IF, IHC-P
<b>Reactivity</b>	Human, Mouse, Rat

References ( 1 )

★★★★☆ Review ( 1 )

Package

100 µl, 25 µl

## Applications

### Application Note

\*Optimal dilutions/concentrations should be determined by the researcher.

Suggested dilution	Recommended dilution
WB	1:1000-1:10000
ICC/IF	Assay dependent
IHC-P	Assay dependent

Not tested in other applications.

**Observed MW (kDa)** 15 kDa.

## Properties

<b>Form</b>	Liquid
<b>Buffer</b>	PBS
<b>Preservative</b>	No preservatives
<b>Storage</b>	Store as concentrated solution. Centrifuge briefly prior to opening vial. For short-term storage (1-2 weeks), store at 4°C. For long-term storage, aliquot and store at -20°C or below. Avoid multiple freeze-thaw cycles.
<b>Concentration</b>	1 mg/ml (Please refer to the vial label for the specific concentration.)
<b>Immunogen</b>	Carrier-protein conjugated synthetic peptide encompassing a sequence within the center region of human FABP4. The exact sequence is proprietary.
<b>Purification</b>	Affinity purified by Protein A.
<b>Conjugation</b>	Unconjugated

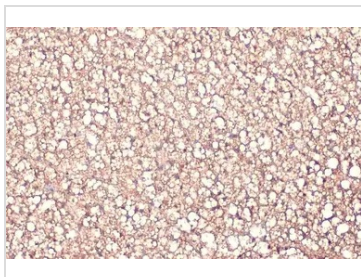
### Note

For laboratory research use only. Not for any clinical, therapeutic, or diagnostic use in humans or animals. Not for animal or human consumption.

Purchasers shall not, and agree not to enable third parties to, analyze, copy, reverse engineer or otherwise attempt to determine the structure or sequence of the product.



For full product information, images and publications, please visit our [website](#).

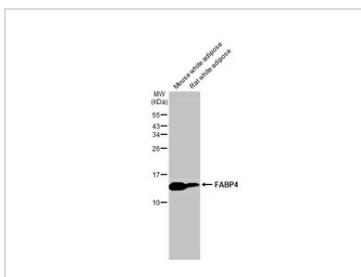
**DATA IMAGES**

**GTx636995 IHC-P Image**

FABP4 antibody [HL1521] detects FABP4 protein at cytoplasm by immunohistochemical analysis.

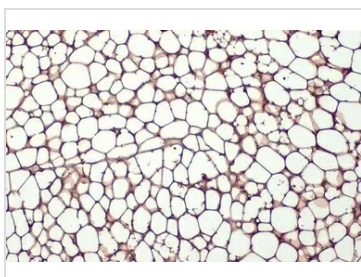
Sample: Paraffin-embedded mouse brown adipocyte.

FABP4 stained by FABP4 antibody [HL1521] (GTx636995) diluted at 1:100.

Antigen Retrieval: Citrate buffer, pH 6.0, 15 min


**GTx636995 WB Image**

Various tissue extracts (50 µg) were separated by 15% SDS-PAGE, and the membrane was blotted with FABP4 antibody [HL1521] (GTx636995) diluted at 1:5000. The HRP-conjugated anti-rabbit IgG antibody (GTx213110-01) was used to detect the primary antibody.

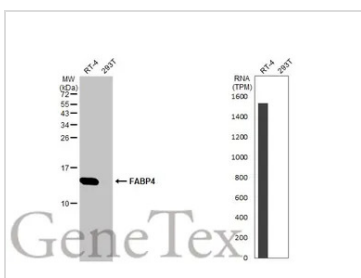

**GTx636995 IHC-P Image**

FABP4 antibody [HL1521] detects FABP4 protein at cytoplasm by immunohistochemical analysis.

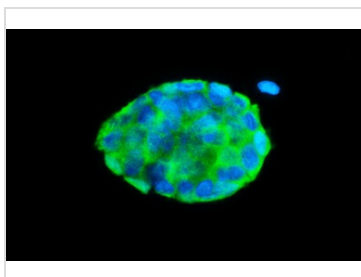
Sample: Paraffin-embedded mouse white adipocyte.

FABP4 stained by FABP4 antibody [HL1521] (GTx636995) diluted at 1:100.

Antigen Retrieval: Citrate buffer, pH 6.0, 15 min


**GTx636995 WB Image**

Various whole cell extracts (30 µg) were separated by 15% SDS-PAGE, and the membrane was blotted with FABP4 antibody [HL1521] (GTx636995) diluted at 1:10000. The HRP-conjugated anti-rabbit IgG antibody (GTx213110-01) was used to detect the primary antibody. Corresponding RNA expression data for the same cell lines are based on Human Protein Atlas program.


**GTx636995 ICC/IF Image**

FABP4 antibody [HL1521] detects FABP4 protein at cytoplasm by immunofluorescent analysis.

Sample: RT-4 cells were fixed in 4% paraformaldehyde at RT for 15 min.

Green: FABP4 stained by FABP4 antibody [HL1521] (GTx636995) diluted at 1:500.

Blue: Fluoroshield with DAPI (GTx30920).



For full product information, images and publications, please visit our [website](https://www.genetex.com).