

SARS-CoV-2 (COVID-19) nsp8 antibody [HL1523]

Cat. No. GTX636997

Host	Rabbit
Clonality	Monoclonal
Isotype	IgG
Applications	WB, ICC/IF, IHC-P (cell pellet)
Reactivity	SARS Coronavirus 2

References (2)

Package

100 µl, 25 µl

Applications

Application Note

*Optimal dilutions/concentrations should be determined by the researcher.

Suggested dilution	Recommended dilution
WB	1:500-1:3000
ICC/IF	Assay dependent
IHC-P (cell pellet)	Assay dependent

Not tested in other applications.

Properties

Form	Liquid
Buffer	PBS
Preservative	No preservatives
Storage	Store as concentrated solution. Centrifuge briefly prior to opening vial. For short-term storage (1-2 weeks), store at 4°C. For long-term storage, aliquot and store at -20°C or below. Avoid multiple freeze-thaw cycles.
Concentration	1 mg/ml (Please refer to the vial label for the specific concentration.)
Immunogen	Recombinant protein encompassing a sequence within the N-terminus region of SARS-CoV-2 (COVID-19) nsp8. (Strain:Wuhan-hu-1)
Purification	Affinity purified by Protein A.
Conjugation	Unconjugated

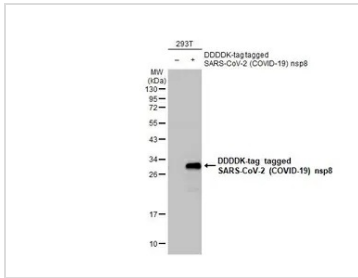
Note

For laboratory research use only. Not for any clinical, therapeutic, or diagnostic use in humans or animals. Not for animal or human consumption.

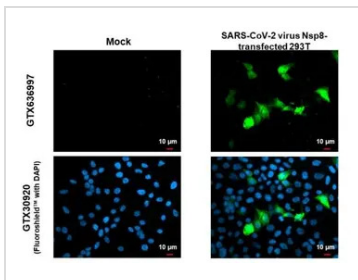
Purchasers shall not, and agree not to enable third parties to, analyze, copy, reverse engineer or otherwise attempt to determine the structure or sequence of the product.



For full product information, images and publications, please visit our [website](#).

DATA IMAGES

GTX636997 WB Image

Non-transfected (–) and transfected (+) 293T whole cell extracts (30 µg) were separated by 12% SDS-PAGE, and the membrane was blotted with SARS-CoV-2 (COVID-19) nsp8 antibody [HL1523] (GTX636997) diluted at 1:3000. The HRP-conjugated anti-rabbit IgG antibody (GTX213110-01) was used to detect the primary antibody.

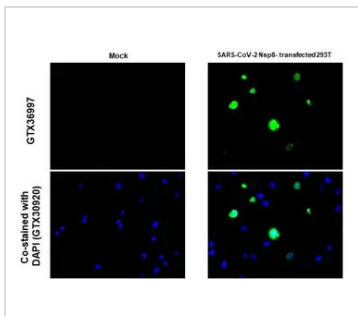

GTX636997 ICC/IF Image

SARS-CoV-2 (COVID-19) nsp8 antibody [HL1523] detects SARS-CoV-2 (COVID-19) nsp8 protein by immunofluorescent analysis.

Sample: Mock and transfected 293T cells were fixed in 4% paraformaldehyde at RT for 15 min.

Green: SARS-CoV-2 (COVID-19) nsp8 stained by SARS-CoV-2 (COVID-19) nsp8 antibody [HL1523] (GTX636997) diluted at 1:500.

Blue: Fluoroshield with DAPI (GTX30920).


GTX636997 IHC-P (cell pellet) Image

SARS-CoV-2 (COVID-19) nsp8 antibody [HL1523] detects SARS-CoV-2 (COVID-19) nsp8 protein at cytoplasm by immunohistochemical analysis.

Sample: Paraffin-embedded mock and SARS-CoV-2 Nsp8 transfected 293T cell pellet.

Green: SARS-CoV-2 (COVID-19) nsp8 stained by SARS-CoV-2 (COVID-19) nsp8 antibody [HL1523] (GTX636997) diluted at 1:100.

Blue: Fluoroshield with DAPI (GTX30920).

Antigen Retrieval: Citrate buffer, pH 6.0, 15 min



For full product information, images and publications, please visit our [website](https://www.genetex.com).