

EpCAM antibody [HL1524]

Cat. No. GTX636998

Host	Rabbit
Clonality	Monoclonal
Isotype	IgG
Applications	WB, ICC/IF, IHC-P, FCM
Reactivity	Human, Mouse

Package
100 µl, 25 µl

Applications

Application Note

*Optimal dilutions/concentrations should be determined by the researcher.

Suggested dilution	Recommended dilution
WB	1:500-1:3000
ICC/IF	Assay dependent
IHC-P	Assay dependent
FCM	Assay dependent

Not tested in other applications.

Observed MW (kDa) 43 kDa.

Product Note This antibody was raised against human EpCAM Extracellular domain.

Properties

Form	Liquid
Buffer	PBS
Preservative	No preservatives
Storage	Store as concentrated solution. Centrifuge briefly prior to opening vial. For short-term storage (1-2 weeks), store at 4°C. For long-term storage, aliquot and store at -20°C or below. Avoid multiple freeze-thaw cycles.
Concentration	1 mg/ml (Please refer to the vial label for the specific concentration.)
Immunogen	Recombinant protein encompassing a sequence within the Extracellular domain of human EpCAM. The exact sequence is proprietary.
Purification	Affinity purified by Protein A.
Conjugation	Unconjugated

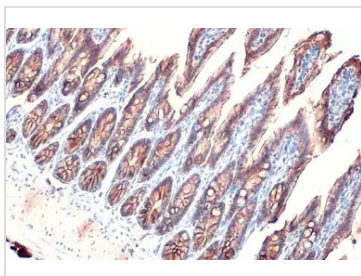


For full product information, images and publications, please visit our [website](#).

For laboratory research use only. Not for any clinical, therapeutic, or diagnostic use in humans or animals. Not for animal or human consumption.

Note

Purchasers shall not, and agree not to enable third parties to, analyze, copy, reverse engineer or otherwise attempt to determine the structure or sequence of the product.

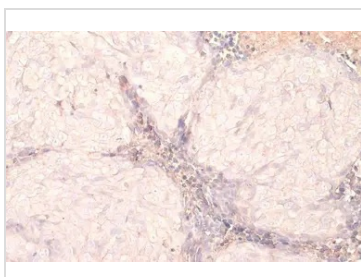
DATA IMAGES

GTX636998 IHC-P Image

EpCAM antibody [HL1524] detects EpCAM protein at cell membrane by immunohistochemical analysis.

Sample: Paraffin-embedded mouse intestine.

EpCAM stained by EpCAM antibody [HL1524] (GTX636998) diluted at 1:100.

Antigen Retrieval: Citrate buffer, pH 6.0, 15 min

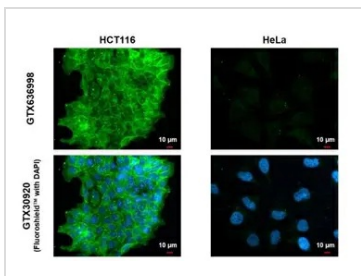

GTX636998 IHC-P Image

EpCAM antibody [HL1524] detects EpCAM protein at cell membrane by immunohistochemical analysis.

Sample: Paraffin-embedded HCT116 xenograft.

EpCAM stained by EpCAM antibody [HL1524] (GTX636998) diluted at 1:100.

Antigen Retrieval: Citrate buffer, pH 6.0, 15 min

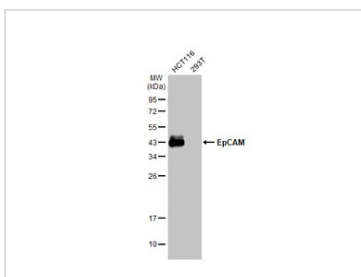

GTX636998 ICC/IF Image

EpCAM antibody [HL1524] detects EpCAM protein at cell membrane and cell junction by immunofluorescent analysis.

Sample: HCT116 and HeLa cells were fixed in ice-cold MeOH for 5 min.

Green: EpCAM stained by EpCAM antibody [HL1524] (GTX636998) diluted at 1:500.

Blue: Fluoroshield with DAPI (GTX30920).


GTX636998 WB Image

Various whole cell extracts (30 µg) were separated by 12% SDS-PAGE, and the membrane was blotted with EpCAM antibody [HL1524] (GTX636998) diluted at 1:3000. The HRP-conjugated anti-rabbit IgG antibody (GTX213110-01) was used to detect the primary antibody.



For full product information, images and publications, please visit our [website](https://www.genetex.com).