

# Claudin 3 antibody [HL1527]

**Cat. No. GTX637000**

<b>Host</b>	Rabbit
<b>Clonality</b>	Monoclonal
<b>Isotype</b>	IgG
<b>Applications</b>	WB, ICC/IF, IHC-P
<b>Reactivity</b>	Human

**Package**  
100 µl, 25 µl

## Applications

### Application Note

\*Optimal dilutions/concentrations should be determined by the researcher.

Suggested dilution	Recommended dilution
WB	1:500-1:3000
ICC/IF	Assay dependent
IHC-P	Assay dependent

Not tested in other applications.

**Observed MW (kDa)** 23 kDa.

**Product Note** This antibody was raised against human Claudin 3 Intracellular domain.

## Properties

<b>Form</b>	Liquid
<b>Buffer</b>	PBS
<b>Preservative</b>	No preservatives
<b>Storage</b>	Store as concentrated solution. Centrifuge briefly prior to opening vial. For short-term storage (1-2 weeks), store at 4°C. For long-term storage, aliquot and store at -20°C or below. Avoid multiple freeze-thaw cycles.
<b>Concentration</b>	1 mg/ml (Please refer to the vial label for the specific concentration.)
<b>Immunogen</b>	Synthetic peptide encompassing a sequence within the Intracellular domain of human Claudin 3. The exact sequence is proprietary.
<b>Purification</b>	Affinity purified by Protein A.
<b>Conjugation</b>	Unconjugated



For full product information, images and publications, please visit our [website](#).

For laboratory research use only. Not for any clinical, therapeutic, or diagnostic use in humans or animals. Not for animal or human consumption.

**Note**

Purchasers shall not, and agree not to enable third parties to, analyze, copy, reverse engineer or otherwise attempt to determine the structure or sequence of the product.

**DATA IMAGES**

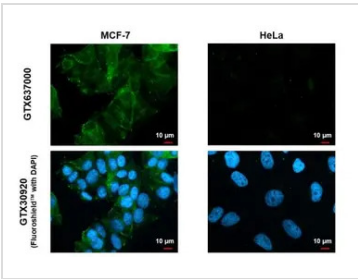
**GTX637000 IHC-P Image**

Claudin 3 antibody [HL1527] detects Claudin 3 protein at cell membrane by immunohistochemical analysis.

Sample: Paraffin-embedded human colon.

Claudin 3 stained by Claudin 3 antibody [HL1527] (GTX637000) diluted at 1:100.

Antigen Retrieval: Citrate buffer, pH 6.0, 15 min

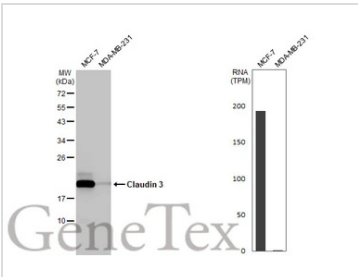

**GTX637000 ICC/IF Image**

Claudin 3 antibody [HL1527] detects Claudin 3 protein at cell membrane by immunofluorescent analysis.

Sample: MCF-7 and HeLa cells were fixed in 4% paraformaldehyde at RT for 15 min.

Green: Claudin 3 stained by Claudin 3 antibody [HL1527] (GTX637000) diluted at 1:500.

Blue: Fluoroshield with DAPI (GTX30920).


**GTX637000 WB Image**

Various whole cell extracts (30 μg) were separated by 12% SDS-PAGE, and the membrane was blotted with Claudin 3 antibody [HL1527] (GTX637000) diluted at 1:1000. The HRP-conjugated anti-rabbit IgG antibody (GTX213110-01) was used to detect the primary antibody. Corresponding RNA expression data for the same cell lines are based on Human Protein Atlas program.



For full product information, images and publications, please visit our [website](https://www.genetex.com).