

Wnt6 antibody [HL1568]

Cat. No. GTX637043

Host	Rabbit
Clonality	Monoclonal
Isotype	IgG
Applications	WB, ICC/IF, IHC-P
Reactivity	Human, Rat

Package
100 µl, 25 µl

Applications

Application Note

*Optimal dilutions/concentrations should be determined by the researcher.

Suggested dilution	Recommended dilution
WB	1:1000-1:10000
ICC/IF	Assay dependent
IHC-P	Assay dependent

Not tested in other applications.

Product Note

This antibody is specific for human Wnt6 protein, and it does not cross react with human Wnt1, Wnt2, Wnt2b, Wnt3, Wnt3a, Wnt4, Wnt5a, Wnt7a, Wnt7b, Wnt8a, Wnt8b, Wnt9a, Wnt9b, Wnt10a, Wnt10b, and Wnt16 protein.

Properties

Form	Liquid
Buffer	PBS
Preservative	No preservatives
Storage	Store as concentrated solution. Centrifuge briefly prior to opening vial. For short-term storage (1-2 weeks), store at 4°C. For long-term storage, aliquot and store at -20°C or below. Avoid multiple freeze-thaw cycles.
Concentration	1 mg/ml (Please refer to the vial label for the specific concentration.)
Immunogen	Carrier-protein conjugated synthetic peptide encompassing a sequence within the center region of human Wnt6. The exact sequence is proprietary.
Purification	Affinity purified by Protein A.
Conjugation	Unconjugated

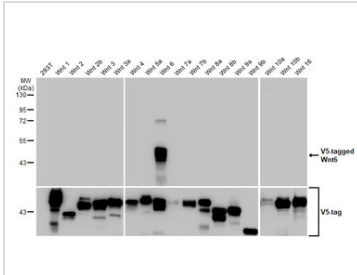


For full product information, images and publications, please visit our [website](#).

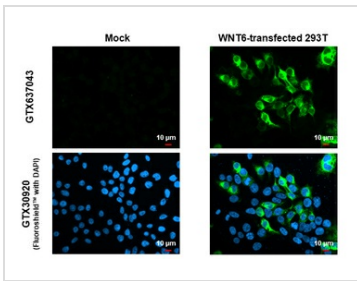
For laboratory research use only. Not for any clinical, therapeutic, or diagnostic use in humans or animals. Not for animal or human consumption.

Note

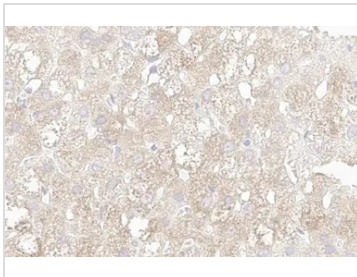
Purchasers shall not, and agree not to enable third parties to, analyze, copy, reverse engineer or otherwise attempt to determine the structure or sequence of the product.

DATA IMAGES

GTX637043 WB Image

Non-transfected (–) and transfected (+) 293T whole cell extracts were separated by 10% SDS-PAGE, and the membrane was blotted with Wnt6 antibody [HL1568] (GTX637043) diluted at 1:5000. The HRP-conjugated anti-rabbit IgG antibody (GTX213110-01) was used to detect the primary antibody.


GTX637043 ICC/IF Image

Wnt6 antibody [HL1568] detects Wnt6 protein by immunofluorescent analysis.
Sample: Mock and transfected 293T cells were fixed in 4% paraformaldehyde at RT for 15 min.
Green: Wnt6 stained by Wnt6 antibody [HL1568] (GTX637043) diluted at 1:500.
Blue: Fluoroshield with DAPI (GTX30920).


GTX637043 IHC-P Image

Wnt6 antibody [HL1568] detects Wnt6 protein by immunohistochemical analysis.
Sample: Paraffin-embedded rat adrenal gland.
Wnt6 stained by Wnt6 antibody [HL1568] (GTX637043) diluted at 1:100.
Antigen Retrieval: Citrate buffer, pH 6.0, 15 min



For full product information, images and publications, please visit our [website](https://www.genetex.com).