

ADAM17 antibody [HL1572]

Cat. No. GTX637047

Host	Rabbit
Clonality	Monoclonal
Isotype	IgG
Applications	WB, IHC-P
Reactivity	Human, Mouse, Cat, Dog

Package
100 µl, 25 µl

Applications

Application Note

*Optimal dilutions/concentrations should be determined by the researcher.

Suggested dilution	Recommended dilution
WB	1:500-1:3000
IHC-P	Assay dependent

Not tested in other applications.

Observed MW (kDa) 125-135 kDa.

Product Note This antibody was raised against human ADAM17 Intracellular domain.

Properties

Form	Liquid
Buffer	PBS
Preservative	No preservative
Storage	Store as concentrated solution. Centrifuge briefly prior to opening vial. For short-term storage (1-2 weeks), store at 4°C. For long-term storage, aliquot and store at -20°C or below. Avoid multiple freeze-thaw cycles.
Concentration	2 mg/ml (Please refer to the vial label for the specific concentration.)
Immunogen	Recombinant protein encompassing a sequence within the Intracellular domain of human ADAM17. The exact sequence is proprietary.
Purification	Affinity purified by Protein A.
Conjugation	Unconjugated

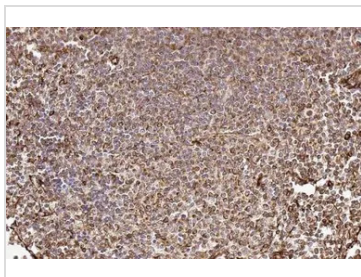
Note

For laboratory research use only. Not for any clinical, therapeutic, or diagnostic use in humans or animals. Not for animal or human consumption.

Purchasers shall not, and agree not to enable third parties to, analyze, copy, reverse engineer or otherwise attempt to determine the structure or sequence of the product.



For full product information, images and publications, please visit our [website](#).

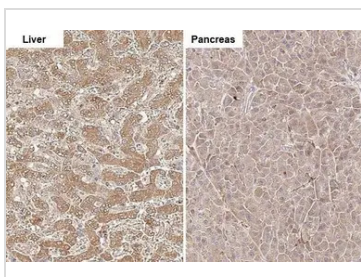
DATA IMAGES

GTX637047 IHC-P Image

ADAM17 antibody [HL1572] detects ADAM17 protein at cell membrane and cytoplasm by immunohistochemical analysis.

Sample: Paraffin-embedded cat mammary gland.

ADAM17 stained by ADAM17 antibody [HL1572] (GTX637047) diluted at 1:100.

Antigen Retrieval: Citrate buffer, pH 6.0, 15 min

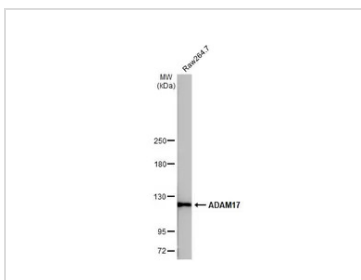

GTX637047 IHC-P Image

ADAM17 antibody [HL1572] detects ADAM17 protein at cell membrane and cytoplasm by immunohistochemical analysis.

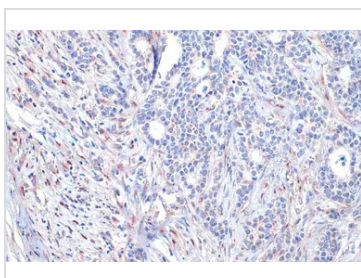
Sample: Paraffin-embedded dog tissues.

ADAM17 stained by ADAM17 antibody [HL1572] (GTX637047) diluted at 1:100.

Antigen Retrieval: Citrate buffer, pH 6.0, 15 min


GTX637047 WB Image

Whole cell extract (30 µg) was separated by 5% SDS-PAGE, and the membrane was blotted with ADAM17 antibody [HL1572] (GTX637047) diluted at 1:1000. The HRP-conjugated anti-rabbit IgG antibody (GTX213110-01) was used to detect the primary antibody, and the signal was developed with Trident ECL plus-Enhanced.

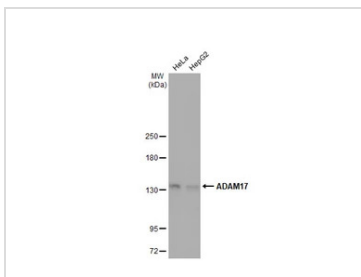

GTX637047 IHC-P Image

ADAM17 antibody [HL1572] detects ADAM17 protein at cytoplasm by immunohistochemical analysis.

Sample: Paraffin-embedded human breast carcinoma.

ADAM17 stained by ADAM17 antibody [HL1572] (GTX637047) diluted at 1:200.

Antigen Retrieval: Citrate buffer, pH 6.0, 15 min


GTX637047 WB Image

Various whole cell extracts (30 µg) were separated by 5% SDS-PAGE, and the membrane was blotted with ADAM17 antibody [HL1572] (GTX637047) diluted at 1:2000. The HRP-conjugated anti-rabbit IgG antibody (GTX213110-01) was used to detect the primary antibody, and the signal was developed with Trident ECL plus-Enhanced.



For full product information, images and publications, please visit our [website](https://www.genetex.com).