

Dopamine Receptor D2 antibody [HL1584]

Cat. No. GTX637063

Host	Rabbit
Clonality	Monoclonal
Isotype	IgG
Applications	WB, ICC/IF, FCM
Reactivity	Human, Mouse, Rat

Package
100 µl, 25 µl

Applications

Application Note

*Optimal dilutions/concentrations should be determined by the researcher.

Suggested dilution	Recommended dilution
WB	1:500-1:3000
ICC/IF	Assay dependent
FCM	Assay dependent

Note : Permeabilization : 0.1% saponin

Not tested in other applications.

Observed MW (kDa) 57 kDa.

Product Note This antibody was raised against human Dopamine Receptor D2 Extracellular domain.

Properties

Form	Liquid
Buffer	PBS
Preservative	No preservatives
Storage	Store as concentrated solution. Centrifuge briefly prior to opening vial. For short-term storage (1-2 weeks), store at 4°C. For long-term storage, aliquot and store at -20°C or below. Avoid multiple freeze-thaw cycles.
Concentration	1 mg/ml (Please refer to the vial label for the specific concentration.)
Immunogen	Recombinant protein encompassing a sequence within the Extracellular domain human of Dopamine Receptor D2. The exact sequence is proprietary.
Purification	Affinity purified by Protein A.
Conjugation	Unconjugated



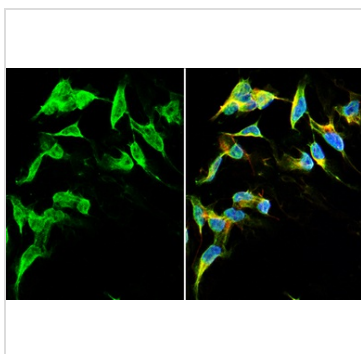
For full product information, images and publications, please visit our [website](#).

For laboratory research use only. Not for any clinical, therapeutic, or diagnostic use in humans or animals. Not for animal or human consumption.

Note

Purchasers shall not, and agree not to enable third parties to, analyze, copy, reverse engineer or otherwise attempt to determine the structure or sequence of the product.

DATA IMAGES



GTX637063 ICC/IF Image

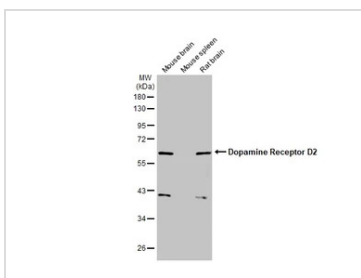
Dopamine Receptor D2 antibody [HL1584] detects Dopamine Receptor D2 protein by immunofluorescent analysis.

Sample: SH-SY-5Y cells were fixed in 4% paraformaldehyde at RT for 15 min.

Green: Dopamine Receptor D2 stained by Dopamine Receptor D2 antibody [HL1584] (GTX637063) diluted at 1:500.

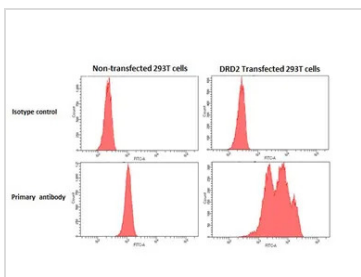
Red: alpha Tubulin, a cytoskeleton marker, stained by alpha Tubulin antibody [GT114] (GTX628802) diluted at 1:1000.

Blue: Fluoroshield with DAPI (GTX30920).



GTX637063 WB Image

Various tissue extracts (50 µg) were separated by 10% SDS-PAGE, and the membrane was blotted with Dopamine Receptor D2 antibody [HL1584] (GTX637063) diluted at 1:1000. The HRP-conjugated anti-rabbit IgG antibody (GTX213110-01) was used to detect the primary antibody.



GTX637063 FCM Image

Dopamine Receptor D2 antibody [HL1584] (GTX637063) detects DRD2 protein by flow cytometry analysis. Sample: Non-transfected and transfected 293T cells were fixed in 4% paraformaldehyde at 4°C for 15 min and washed with 0.1% saponin buffer to permeabilize the cell membrane.

The cells were following stained with Dopamine Receptor D2 antibody [HL1584] (GTX637063) diluted at 1:50 or a Rabbit IgG isotype control (GTX35035) control at 4°C for 1 hour.



For full product information, images and publications, please visit our [website](#).