

CD28 antibody [HL1589]

Cat. No. GTX637068

Host	Rabbit
Clonality	Monoclonal
Isotype	IgG
Applications	WB, ICC/IF, IHC-P
Reactivity	Human, Cat, Dog

Package
100 µl, 25 µl

Applications

Application Note

*Optimal dilutions/concentrations should be determined by the researcher.

Suggested dilution	Recommended dilution
WB	1:500-1:3000
ICC/IF	Assay dependent
IHC-P	Assay dependent

Not tested in other applications.

Observed MW (kDa) 10-30 (de-glycosylated form), 35-50 (glycosylated form) kDa.

Product Note This antibody was raised against human CD28 Intracellular domain.

Properties

Form	Liquid
Buffer	PBS
Preservative	No preservatives
Storage	Store as concentrated solution. Centrifuge briefly prior to opening vial. For short-term storage (1-2 weeks), store at 4°C. For long-term storage, aliquot and store at -20°C or below. Avoid multiple freeze-thaw cycles.
Concentration	1 mg/ml (Please refer to the vial label for the specific concentration.)
Immunogen	Synthetic peptide encompassing a sequence within the Intracellular domain of human CD28. The exact sequence is proprietary.
Purification	Affinity purified by Protein A.
Conjugation	Unconjugated



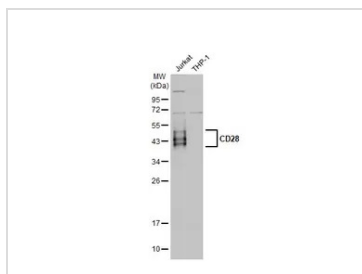
For full product information, images and publications, please visit our [website](#).

For laboratory research use only. Not for any clinical, therapeutic, or diagnostic use in humans or animals. Not for animal or human consumption.

Note

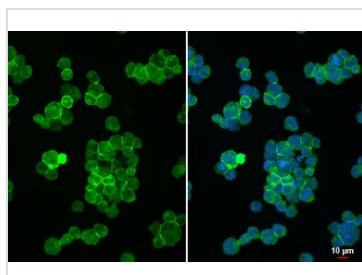
Purchasers shall not, and agree not to enable third parties to, analyze, copy, reverse engineer or otherwise attempt to determine the structure or sequence of the product.

DATA IMAGES



GTX637068 WB Image

Various whole cell extracts (30 µg) were separated by 12% SDS-PAGE, and the membrane was blotted with CD28 antibody [HL1589] (GTX637068) diluted at 1:1000. The HRP-conjugated anti-rabbit IgG antibody (GTX213110-01) was used to detect the primary antibody.



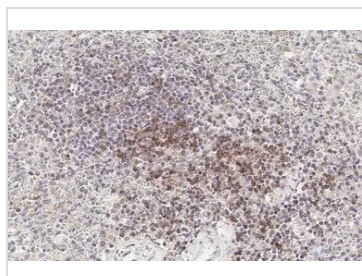
GTX637068 ICC/IF Image

CD28 antibody [HL1589] detects CD28 protein at cell membrane by immunofluorescent analysis.

Sample: Jurkat cells were fixed in 4% paraformaldehyde at RT for 15 min.

Green: CD28 stained by CD28 antibody [HL1589] (GTX637068) diluted at 1:500.

Blue: Fluoroshield with DAPI (GTX30920).



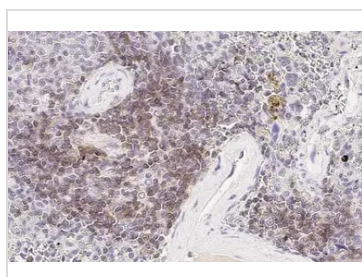
GTX637068 IHC-P Image

CD28 antibody [HL1589] detects CD28 protein at cell membrane by immunohistochemical analysis.

Sample: Paraffin-embedded cat spleen.

CD28 stained by CD28 antibody [HL1589] (GTX637068) diluted at 1:100.

Antigen Retrieval: Citrate buffer, pH 6.0, 15 min



GTX637068 IHC-P Image

CD28 antibody [HL1589] detects CD28 protein at cell membrane by immunohistochemical analysis.

Sample: Paraffin-embedded dog spleen.

CD28 stained by CD28 antibody [HL1589] (GTX637068) diluted at 1:100.

Antigen Retrieval: Citrate buffer, pH 6.0, 15 min



For full product information, images and publications, please visit our [website](https://www.genetex.com).