

## HA tag antibody [HL1603]

**Cat. No. GTX637082**

<b>Host</b>	Rabbit
<b>Clonality</b>	Monoclonal
<b>Isotype</b>	IgG
<b>Applications</b>	WB, ICC/IF, ELISA, IHC-P (cell pellet)
<b>Reactivity</b>	Species independent

 Review ( 1 )

**Package**  
 100 µl, 25 µl

## Applications

**Application Note**

\*Optimal dilutions/concentrations should be determined by the researcher.

Suggested dilution	Recommended dilution
WB	1:1000-1:10000
ICC/IF	Assay dependent
ELISA	Assay dependent
IHC-P (cell pellet)	Assay dependent

Not tested in other applications.

## Properties

<b>Form</b>	Liquid
<b>Buffer</b>	PBS
<b>Preservative</b>	No preservatives
<b>Storage</b>	Store as concentrated solution. Centrifuge briefly prior to opening vial. For short-term storage (1-2 weeks), store at 4°C. For long-term storage, aliquot and store at -20°C or below. Avoid multiple freeze-thaw cycles.
<b>Concentration</b>	1 mg/ml (Please refer to the vial label for the specific concentration.)
<b>Immunogen</b>	The immunogen used to generate this antibody corresponds to HA tag.
<b>Purification</b>	Affinity purified by Protein A.
<b>Conjugation</b>	Unconjugated

**Note**

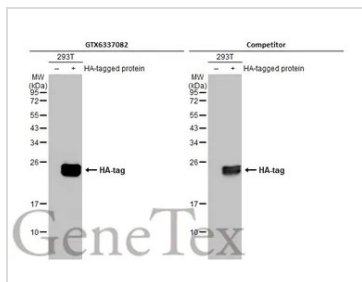
For laboratory research use only. Not for any clinical, therapeutic, or diagnostic use in humans or animals. Not for animal or human consumption.

Purchasers shall not, and agree not to enable third parties to, analyze, copy, reverse engineer or otherwise attempt to determine the structure or sequence of the product.



For full product information, images and publications, please visit our [website](#).

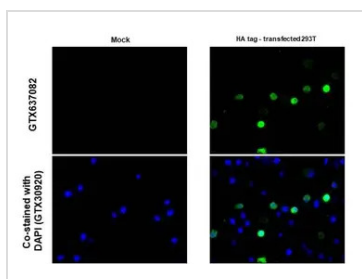
DATA IMAGES



**GTX637082 WB Image**

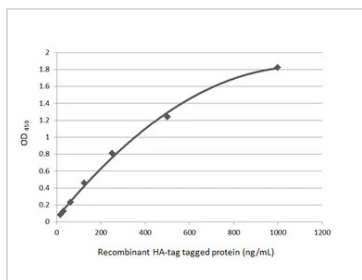
Non-transfected (-) and transfected (+) 293T whole cell extracts (30 µg) were separated by 12% SDS-PAGE, and the membranes were blotted with HA tag antibody [HL1603] (GTX637082) diluted at 1:5000 and competitor's antibody (Competitor) diluted at 1:5000. The HRP-conjugated anti-rabbit IgG antibody (GTX213110-01) was used to detect the primary antibody.

\*The competitor is not affiliated with GeneTex and does not endorse this product.



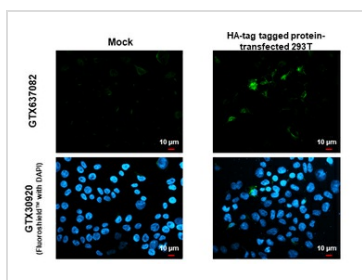
**GTX637082 IHC-P (cell pellet) Image**

HA tag antibody [HL1603] detects HA tag protein at cytoplasm by immunohistochemical analysis. Sample: Paraffin-embedded mock and HA tag - transfected 293T cell pellet. Green: HA tag stained by HA tag antibody [HL1603] (GTX637082) diluted at 1:1000. Blue: Fluoroshield with DAPI (GTX30920). Antigen Retrieval: Citrate buffer, pH 6.0, 15 min



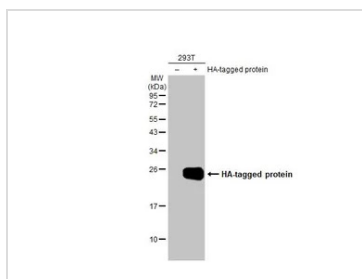
**GTX637082 ELISA Image**

Indirect ELISA analysis was performed by coating the plate with recombinant HA-tag tagged protein (1000-15.63 ng/mL). Coated protein was probed with HA tag antibody [HL1603] (GTX637082) (1 µg/mL). Goat anti-rabbit IgG antibody (HRP) (GTX213110-01) (1:10000) was used to detect the bound primary antibody.



**GTX637082 ICC/IF Image**

HA tag antibody [HL1603] detects HA tag protein by immunofluorescent analysis. Sample: Mock and transfected 293T cells were fixed in 4% paraformaldehyde at RT for 15 min. Green: HA tag stained by HA tag antibody [HL1603] (GTX637082) diluted at 1:500. Blue: Fluoroshield with DAPI (GTX30920).



**GTX637082 WB Image**

Non-transfected (-) and transfected (+) 293T whole cell extracts (30 µg) were separated by 12% SDS-PAGE, and the membrane was blotted with HA tag antibody [HL1603] (GTX637082) diluted at 1:5000. The HRP-conjugated anti-rabbit IgG antibody (GTX213110-01) was used to detect the primary antibody.



For full product information, images and publications, please visit our [website](#).