

CD133 antibody [HL1631]

Cat. No. GTX637124

Host	Rabbit
Clonality	Monoclonal
Isotype	IgG
Applications	FCM
Reactivity	Human

Package
100 µl, 25 µl

Applications

Application Note

*Optimal dilutions/concentrations should be determined by the researcher.

Suggested dilution	Recommended dilution
FCM	1:50-1:200

Not tested in other applications.

Product Note This antibody was raised against human CD133 Extracellular domain.

Properties

Form	Liquid
Buffer	PBS
Preservative	No preservatives
Storage	Store as concentrated solution. Centrifuge briefly prior to opening vial. For short-term storage (1-2 weeks), store at 4°C. For long-term storage, aliquot and store at -20°C or below. Avoid multiple freeze-thaw cycles.
Concentration	1 mg/ml (Please refer to the vial label for the specific concentration.)
Immunogen	Recombinant protein encompassing a sequence within the Extracellular domain of human CD133. The exact sequence is proprietary.
Purification	Affinity purified by Protein A.
Conjugation	Unconjugated

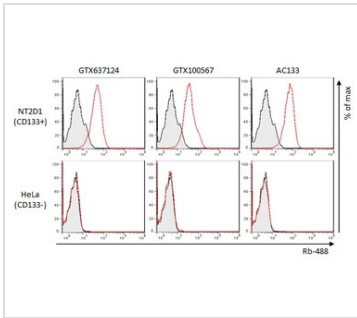
Note

For laboratory research use only. Not for any clinical, therapeutic, or diagnostic use in humans or animals. Not for animal or human consumption.

Purchasers shall not, and agree not to enable third parties to, analyze, copy, reverse engineer or otherwise attempt to determine the structure or sequence of the product.



For full product information, images and publications, please visit our [website](#).

DATA IMAGES

GTX637124 FCM Image

CD133 antibody [HL1631] (GTX637124) detects CD133 protein by flow cytometry analysis.

Sample: NT2D1 cell.

Gray: Rabbit IgG Isotype control.

Red: CD133 antibody [HL1631] (GTX637124) dilution: 1:50.

Acquisition of 20,000 events were collected for FACS analysis.

*The competitor (clone [AC133]) is not affiliated with GeneTex and does not endorse this product.



For full product information, images and publications, please visit our [website](https://www.genetex.com).