

ROCK1 + ROCK2 antibody [HL1632]

Cat. No. GTX637125

Host	Rabbit
Clonality	Monoclonal
Isotype	IgG
Applications	WB, ICC/IF, IHC-P
Reactivity	Human, Mouse, Rat

Package
100 µl, 25 µl

Applications

Application Note

*Optimal dilutions/concentrations should be determined by the researcher.

Suggested dilution	Recommended dilution
WB	1:500-1:10000
ICC/IF	Assay dependent
IHC-P	Assay dependent

Not tested in other applications.

Observed MW (kDa) 159 kDa.

Properties

Form	Liquid
Buffer	PBS
Preservative	No preservatives
Storage	Store as concentrated solution. Centrifuge briefly prior to opening vial. For short-term storage (1-2 weeks), store at 4°C. For long-term storage, aliquot and store at -20°C or below. Avoid multiple freeze-thaw cycles.
Concentration	1 mg/ml (Please refer to the vial label for the specific concentration.)
Immunogen	Recombinant fragment of human ROCK1 .
Purification	Affinity purified by Protein A.
Conjugation	Unconjugated

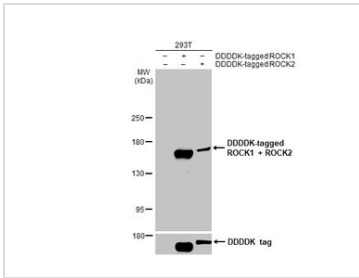
Note

For laboratory research use only. Not for any clinical, therapeutic, or diagnostic use in humans or animals. Not for animal or human consumption.

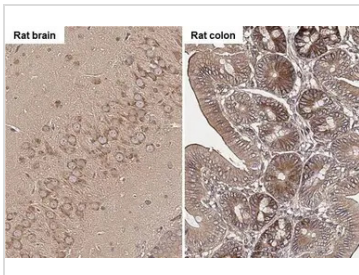
Purchasers shall not, and agree not to enable third parties to, analyze, copy, reverse engineer or otherwise attempt to determine the structure or sequence of the product.



For full product information, images and publications, please visit our [website](#).

DATA IMAGES

GTX637125 WB Image

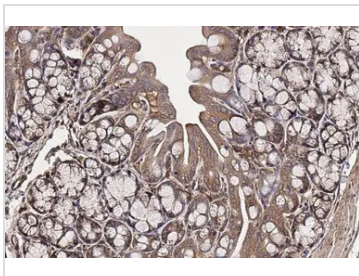
Non-transfected (–) and transfected (+) 293T whole cell extract (30 µg) were separated by 5% SDS-PAGE, and the membrane was blotted with ROCK1 + ROCK2 antibody [HL1632] (GTX637125) diluted at 1:5000. The HRP-conjugated anti-rabbit IgG antibody (GTX213110-01) was used to detect the primary antibody.


GTX637125 IHC-P Image

ROCK1 + ROCK2 antibody [HL1632] detects ROCK1 + ROCK2 protein by immunohistochemical analysis. Sample: Paraffin-embedded rat tissues.

ROCK1 + ROCK2 stained by ROCK1 + ROCK2 antibody [HL1632] (GTX637125) diluted at 1:200.

Antigen Retrieval: Citrate buffer, pH 6.0, 15 min

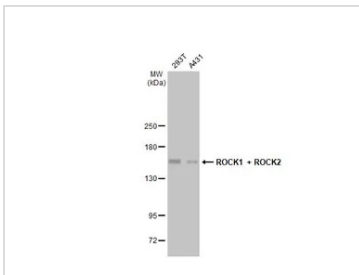

GTX637125 IHC-P Image

ROCK1 + ROCK2 antibody [HL1632] detects ROCK1 + ROCK2 protein at cell membrane and cytoplasm by immunohistochemical analysis.

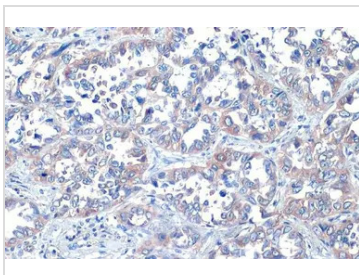
Sample: Paraffin-embedded mouse colon.

ROCK1 + ROCK2 stained by ROCK1 + ROCK2 antibody [HL1632] (GTX637125) diluted at 1:200.

Antigen Retrieval: Citrate buffer, pH 6.0, 15 min


GTX637125 WB Image

Various whole cell extracts (30 µg) were separated by 5% SDS-PAGE, and the membrane was blotted with ROCK1 + ROCK2 antibody [HL1632] (GTX637125) diluted at 1:1000. The HRP-conjugated anti-rabbit IgG antibody (GTX213110-01) was used to detect the primary antibody.


GTX637125 IHC-P Image

ROCK1 + ROCK2 antibody [HL1632] detects ROCK1 + ROCK2 protein at cytoplasm by immunohistochemical analysis.

Sample: Paraffin-embedded human lung cancer.

ROCK1 + ROCK2 stained by ROCK1 + ROCK2 antibody [HL1632] (GTX637125) diluted at 1:100.

Antigen Retrieval: Citrate buffer, pH 6.0, 15 min



For full product information, images and publications, please visit our [website](https://www.genetex.com).