

O-GlcNAc transferase antibody [HL1641]

Cat. No. GTX637222

Host	Rabbit
Clonality	Monoclonal
Isotype	IgG
Applications	WB, ICC/IF, IHC-P
Reactivity	Human, Mouse, Rat, Drosophila

References (1)

Package

100 µl, 25 µl

Applications

Application Note

*Optimal dilutions/concentrations should be determined by the researcher.

Suggested dilution	Recommended dilution
WB	1:500-1:3000
ICC/IF	Assay dependent
IHC-P	Assay dependent

Not tested in other applications.

Observed MW (kDa) 110 kDa.

Properties

Form	Liquid
Buffer	PBS
Preservative	No preservatives
Storage	Store as concentrated solution. Centrifuge briefly prior to opening vial. For short-term storage (1-2 weeks), store at 4°C. For long-term storage, aliquot and store at -20°C or below. Avoid multiple freeze-thaw cycles.
Concentration	1 mg/ml (Please refer to the vial label for the specific concentration.)
Immunogen	Recombinant protein encompassing a sequence within the center region of human O-GlcNAc transferase. The exact sequence is proprietary.
Purification	Affinity purified by Protein A.
Conjugation	Unconjugated

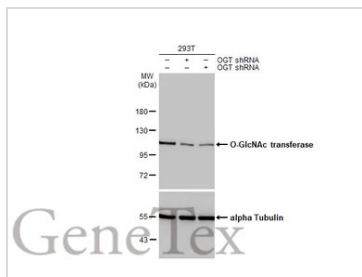
Note

For laboratory research use only. Not for any clinical, therapeutic, or diagnostic use in humans or animals. Not for animal or human consumption.

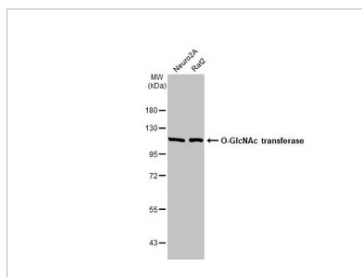
Purchasers shall not, and agree not to enable third parties to, analyze, copy, reverse engineer or otherwise attempt to determine the structure or sequence of the product.



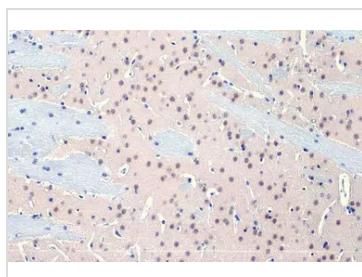
For full product information, images and publications, please visit our [website](#).

DATA IMAGES

GTx637222 WB Image

Non-transfected (–) and transfected (+) 293T whole cell extracts (30 µg) were separated by 7.5% SDS-PAGE, and the membrane was blotted with O-GlcNAc transferase antibody [HL1641] (GTx637222) diluted at 1:1000. The HRP-conjugated anti-rabbit IgG antibody (GTx213110-01) was used to detect the primary antibody.


GTx637222 WB Image

Various whole cell extracts (30 µg) were separated by 7.5% SDS-PAGE, and the membrane was blotted with O-GlcNAc transferase antibody [HL1641] (GTx637222) diluted at 1:1000. The HRP-conjugated anti-rabbit IgG antibody (GTx213110-01) was used to detect the primary antibody.

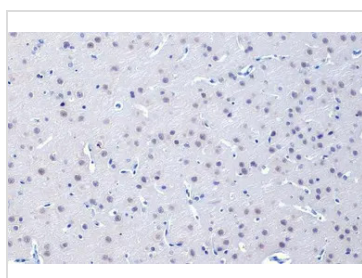

GTx637222 IHC-P Image

O-GlcNAc transferase antibody [HL1641] detects O-GlcNAc transferase protein at nucleus by immunohistochemical analysis.

Sample: Paraffin-embedded mouse brain.

O-GlcNAc transferase stained by O-GlcNAc transferase antibody [HL1641] (GTx637222) diluted at 1:100.

Antigen Retrieval: Citrate buffer, pH 6.0, 15 min

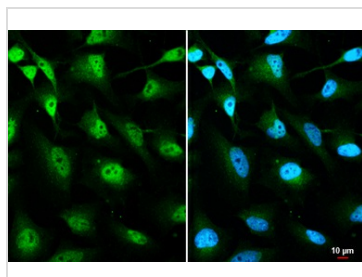

GTx637222 IHC-P Image

O-GlcNAc transferase antibody [HL1641] detects O-GlcNAc transferase protein at nucleus by immunohistochemical analysis.

Sample: Paraffin-embedded rat brain.

O-GlcNAc transferase stained by O-GlcNAc transferase antibody [HL1641] (GTx637222) diluted at 1:100.

Antigen Retrieval: Citrate buffer, pH 6.0, 15 min


GTx637222 ICC/IF Image

O-GlcNAc transferase antibody [HL1641] detects O-GlcNAc transferase protein at cytoplasm and nucleus by immunofluorescent analysis.

Sample: HeLa cells were fixed in 4% paraformaldehyde at RT for 15 min.

Green: O-GlcNAc transferase stained by O-GlcNAc transferase antibody [HL1641] (GTx637222) diluted at 1:500.

Blue: Fluoroshield with DAPI (GTx30920).



For full product information, images and publications, please visit our [website](http://www.genetex.com).