

## Human Papillomavirus type 16 E7 antibody [HL1647]

Cat. No. GTX637228

Host	Rabbit
Clonality	Monoclonal
Isotype	IgG
Applications	ICC/IF, ELISA, Lateral Flow, Sandwich ELISA
Reactivity	Human papillomavirus type 16

Package  
100 µl, 25 µl

## Applications

## Application Note

\*Optimal dilutions/concentrations should be determined by the researcher.

Suggested dilution	Recommended dilution
ICC/IF	Assay dependent
ELISA	Assay dependent
Lateral Flow	Assay dependent
Sandwich ELISA	Assay dependent

**Note : Capture : GTX637546 / GTX637228, Detection : GTX637228 / GTX637546. Please notice that GTX637228 / GTX637546 needs to be conjugated to HRP to function as the detection antibody when paired with GTX637546 / GTX637228. Please contact us for custom HRP-conjugated antibody**

Not tested in other applications.

## Product Note

This antibody was raised against Human Papillomavirus type 16 E7, and it does not cross-react with Human Papillomavirus type 18 E7.

## Properties

Form	Liquid
Buffer	PBS
Preservative	No preservatives
Storage	Store as concentrated solution. Centrifuge briefly prior to opening vial. For short-term storage (1-2 weeks), store at 4°C. For long-term storage, aliquot and store at -20°C or below. Avoid multiple freeze-thaw cycles.
Concentration	2 mg/ml (Please refer to the vial label for the specific concentration.)
Immunogen	Full length Human Papillomavirus type 16 E7 recombinant protein (#Isolate African 1 / Isolate European German 131)
Purification	Affinity purified by Protein A.
Conjugation	Unconjugated



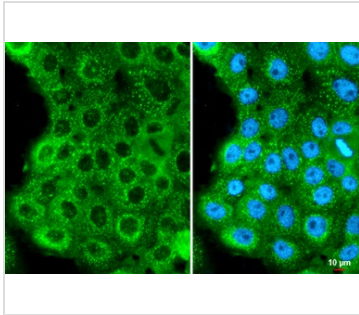
For full product information, images and publications, please visit our [website](#).

Date 2026 / 02 / 02 Page 1 of 2

For laboratory research use only. Not for any clinical, therapeutic, or diagnostic use in humans or animals. Not for animal or human consumption.

**Note**

Purchasers shall not, and agree not to enable third parties to, analyze, copy, reverse engineer or otherwise attempt to determine the structure or sequence of the product.

**DATA IMAGES**

**GTX637228 ICC/IF Image**

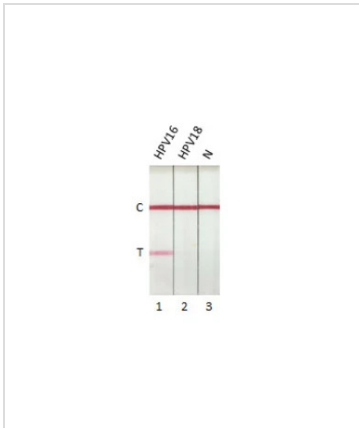
Human Papillomavirus type 16 E7 antibody [HL1647] detects Human Papillomavirus type 16 E7 protein by immunofluorescent analysis.

Sample: Caski cells were fixed in 4% paraformaldehyde at RT for 15 min.

Green: Human Papilloma virus type 16 E7 stained by Human Papillomavirus type 16 E7 antibody [HL1647] (GTX637228) diluted at 1:500.

Blue: Fluoroshield with DAPI (GTX30920).

Scale bar= 10µm.


**GTX637228 Lateral Flow Image**

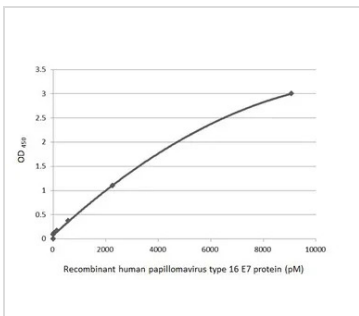
Detection of Human Papillomavirus type 16 E7 protein by lateral flow assay using the monoclonal antibody pair.

Capture: Human Papillomavirus type 16 E7 antibody (GTX637228 [HL1647])

**Detection:** Human Papillomavirus type 16 E7 antibody (GTX637546 [HL1821])

**Samples (10 ng) :**

1. HPV16 E7 protein (GTX133411-pro)
2. HPV18 E7 protein (GTX133412-pro)
3. Lysis buffer


**GTX637228 ELISA Image**

Sandwich ELISA detection of recombinant Human Papillomavirus type 16 E7 protein, His tag (GTX133411-pro) using antibodies as below.

**Capture:** Human Papillomavirus type 16 E7 antibody [HL1647] (GTX637228) (5 µg/mL)

**Detection:** HRP-conjugated Human Papillomavirus type 16 E7 antibody [HL1821] (GTX637546) (1 µg/mL)

Please notice that GTX637546 needs to be conjugated to HRP to function as the detection antibody when paired with GTX637228. Please contact us for custom HRP-conjugated antibody.



For full product information, images and publications, please visit our [website](https://www.genetex.com).