

## CD44 antibody [HL1650]

Cat. No. GTX637231

Host	Rabbit
Clonality	Monoclonal
Isotype	IgG
Applications	WB, ICC/IF, IHC-P, FCM
Reactivity	Human, Cat, Dog

★★★★★ Review ( 1 )

Package  
100 µl, 25 µl

## Applications

## Application Note

\*Optimal dilutions/concentrations should be determined by the researcher.

Suggested dilution	Recommended dilution
WB	1:500-1:3000
ICC/IF	Assay dependent
IHC-P	Assay dependent
FCM	Assay dependent

Not tested in other applications.

**Observed MW (kDa)** 50 (deglycosylated form), 80 (standard form), > 100 (variant form) kDa.**Product Note** This antibody was raised against human CD44 Extracellular domain.

## Properties

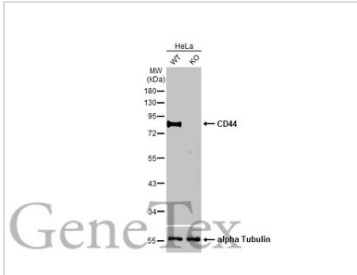
Form	Liquid
Buffer	PBS
Preservative	No preservative
Storage	Store as concentrated solution. Centrifuge briefly prior to opening vial. For short-term storage (1-2 weeks), store at 4°C. For long-term storage, aliquot and store at -20°C or below. Avoid multiple freeze-thaw cycles.
Concentration	1 mg/ml (Please refer to the vial label for the specific concentration.)
Immunogen	Recombinant protein encompassing a sequence within the Extracellular domain of human CD44. The exact sequence is proprietary.
Purification	Affinity purified by Protein A.
Conjugation	Unconjugated

For full product information, images and publications, please visit our [website](#).

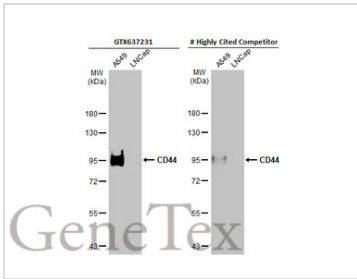
For laboratory research use only. Not for any clinical, therapeutic, or diagnostic use in humans or animals. Not for animal or human consumption.

**Note**

Purchasers shall not, and agree not to enable third parties to, analyze, copy, reverse engineer or otherwise attempt to determine the structure or sequence of the product.

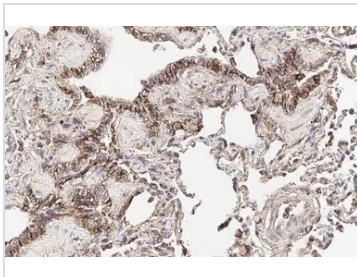
**DATA IMAGES**

**GTX637231 WB Image**

Wild-type (WT) and CD44 knockout (KO) HeLa cell extracts (30 µg) were separated by 10% SDS-PAGE, and the membrane was blotted with CD44 antibody [HL1650] (GTX637231) diluted at 1:1000. The HRP-conjugated anti-rabbit IgG antibody (GTX213110-01) was used to detect the primary antibody.


**GTX637231 WB Image**

Various whole cell extracts (30 µg) were separated by 7.5% SDS-PAGE, and the membranes were blotted with CD44 antibody [HL1650] (GTX637231) diluted at 1:1000 and competitor's antibody diluted at 1:500. The HRP-conjugated anti-rabbit IgG antibody (GTX213110-01) was used to detect the primary antibody.

\*The competitor is not affiliated with GeneTex and does not endorse this product.

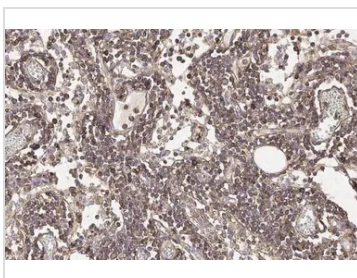

**GTX637231 IHC-P Image**

CD44 antibody [HL1650] detects CD44 protein at cell membrane and cytoplasm by immunohistochemical analysis.

Sample: Paraffin-embedded dog lung.

CD44 stained by CD44 antibody [HL1650] (GTX637231) diluted at 1:100.

Antigen Retrieval: Citrate buffer, pH 6.0, 15 min


**GTX637231 IHC-P Image**

CD44 antibody [HL1650] detects CD44 protein at cell membrane and cytoplasm by immunohistochemical analysis.

Sample: Paraffin-embedded cat mammary gland.

CD44 stained by CD44 antibody [HL1650] (GTX637231) diluted at 1:100.

Antigen Retrieval: Citrate buffer, pH 6.0, 15 min



For full product information, images and publications, please visit our [website](https://www.genetex.com).